



**COMPILATION OF AVAILABLE BIOLOGICAL INFORMATION ON
SALONGA NATIONAL PARK,
DEMOCRATIC REPUBLIC OF CONGO**

September 2007

Dr. Fiona Maisels
Wildlife Conservation Society, DRC



Biodiversity, Salonga.

**Compiled by
Fiona Maisels
WCS Africa Programme**

With the generous help of : Callan Cohen, Ian Harrison, Bila-Isia Inogwabini, Gay Reinartz, Bob Schelly, Lisa Steel, and Melanie Stiassny.

Objective:

Complete the compilation and synthesis of all existing biological information on the park (spatially and descriptively).

Taxa covered are:

- Plants
- Fish
- Birds
- Mammals

Methods

There is little existing documentation of the Salonga area. A few publications list taxa for small areas of this landscape, so individual people were contacted and unpublished information (lists or maps of occurrence of species) requested. The data received, and what is published, are presented in this report either as lists, or as maps culled from existing reports. Each list is accompanied by a map showing sites where the data was collected, and, for the large mammals, maps of distribution have been possible. No data on reptiles or amphibians were found specifically for Salonga.

1. Plants

Four main sources were used here. Jean-Baptiste Dhetchuvi and Maisels *et al* worked in the northern sector of the Salonga National Park, at Botsima (Fig. 1). The Maisels *et al* list comprises mostly species eaten by primates, or larger trees. Dhetchuvi collected as a botanist, so all life forms are represented. Reinartz and Inogwabini worked mostly out of Etate, again in the northern sector (Fig. 1), to the west of the Park. The Reinartz *et al* list comprises species used for nests by bonobos, or eaten by bonobos, whereas the Inogwabini list is more general. It is likely that the Dhetchuvi list is the most accurate as he is a professional botanist, and collected vouchers which are held in herbaria. The other lists are useful, but some may be not the correct species. Genera are likely to be correct.

Sources: plants

Dhetchuvi, J-B (1992) Flore de Botsima. Unpublished Report to University of Brussels.

Dhetchuvi, M.M. (1993) Biologie et usage de quelques espèces de Marantaceae au Zaïre = Biology and use of some Marantaceae in Zaire. *Belgian journal of botany*, **126**: 209-16.

Dhetchuvi, M.M. (1993) Observations sur les Zingiberaceae de l'Afrique Centrale: 1. *Aframomum singulariflorum* Dhetchuvi, nouvelle espèce du Zaïre souvent confondue avec *A. Melegueta* (Roscoe) K. Schum. *Bulletin Jard. Bot. Nat. Belg. /Bulletin National Plantentuin Belge*, **62**: 181-86.

Inogwabini, B.I. (2006) A Preliminary Checklist of Mammals and Plants: Conservation Status of Some Species in Salonga National Park. *Endangered Species Update*, **23**:104-17.

Maisels, F., Gautier-Hion, A. & Gautier, J.P. (1994) Diets of two Sympatric Colobines in Zaire - More Evidence on Seed-Eating in Forests on Poor Soils. *International Journal of Primatology*, **15**:681-701.

Maisels (1991) Unpublished lists of plant species from Botsima, Salonga.

Reinartz, G., Mboyo, B., Guislain, P., & Lubini, . (2007) List of bonobo nesting and feeding trees at Etate.
In litt as Excel file.

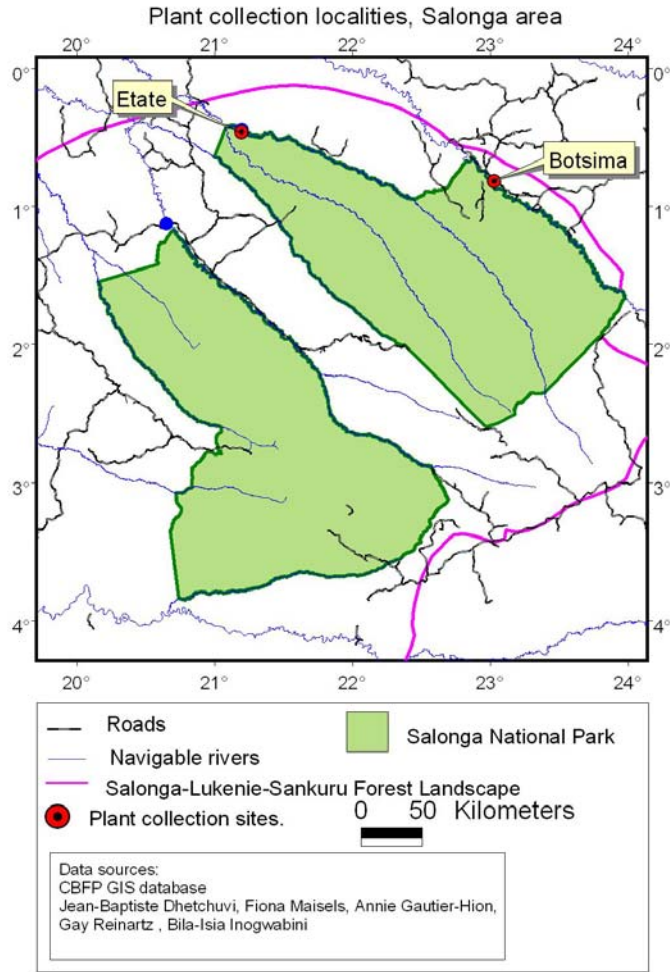


Fig. 1 Collection sites for plants, Salonga Landscape.

Family	Scientific name	Dhetchuvi	Maisels	Reinartz	Inogwabini	Vernacular name Dhetchuvi	Vernacular name Maisels	Vernacular name Reinartz	Vernacular name Inogwabini
Araceae	<i>Laccosperma secundiflorum</i>					Bokao			Bakau
Araceae	<i>Onchomanes gigantea</i>					Ikongolo mbula			
Araceae	<i>Raphia cf. sese</i>								Lifeke (ba)
Araceae	<i>Raphia laurentii</i>								Ikali
Arecaceae	<i>Oncocalamus acanthocnemis</i>					Ba(Li)safa			
Arecaceae	<i>Pandanus candelabrum</i>								Lileke
Arecaceae	<i>Sclerosperma mannii</i>								Mpetempete
Asteraceae	<i>Emilia sp.</i>								Bekolongo
Begoniaceae	<i>Begonia eminii</i>								Bekai ya toto
Begoniaceae	<i>Begonia sp.</i>								Ekomela
Bombacaceae	<i>Ceiba pentandra</i>								Isongu
Burseraceae	<i>Canarium schweinfurthii</i>							Boele	Bobee
Burseraceae	<i>Dacryodes edulis</i>								Besau
Burseraceae	<i>Dacryodes sp.</i>					Bolonga			
Burseraceae	<i>Dacryodes yangambiensis</i>								Bofelenga
Burseraceae	<i>Santiria sp.</i>						Buungu		
Caesalpinaceae	<i>Azelia bella</i>					Bomana, Bonanga			
Caesalpinaceae	<i>Azelia bipindensis</i>							Bofeke	

Family	Scientific name	Dhetchuvi	Maisels	Reinartz	Inogwabini	Vernacular name Dhetchuvi	Vernacular name Maisels	Vernacular name Reinartz	Vernacular name Inogwabini
Caesalpinaceae	<i>Anthonota sp.</i>								
Caesalpinaceae	<i>Aphanocalyx ghesquiereana</i>					Ekongoko			
Caesalpinaceae	<i>Aphanocalyx marginervata</i>								
Caesalpinaceae	<i>Autranella congolensis</i>							Bonyanga	
Caesalpinaceae	<i>Baikea insignis</i>					Ekongoko	Ekongoko		
Caesalpinaceae	<i>Brachystegia laurentii</i>						Bomanga		Bembanga (Bomanga)
Caesalpinaceae	<i>Copaifera mildbraedii</i>								Wamba
Caesalpinaceae	<i>Cryptosepalum congolanum</i>								
Caesalpinaceae	<i>Cryptosepalum staudtii</i>							Yotsu	
Caesalpinaceae	<i>Cynometra bifoliolata</i>							Likumo	
Caesalpinaceae	<i>Cynometra hankeii (alexandrii- Reinartz)</i>						Botuna	Botuna, Mboyo?	
Caesalpinaceae	<i>Cynometra pedicellata</i>					Waka	Ebenge blanc		
Caesalpinaceae	<i>Cynometra sessiliflora var laurentii</i>					Waka/Ebenge			Betuna

Family	Scientific name	Dhetchuvi	Maisels	Reinartz	Inogwabini	Vernacular name Dhetchuvi	Vernacular name Maisels	Vernacular name Reinartz	Vernacular name Inogwabini
Caesalpinaceae	<i>Daniellia pynaertii</i>						Ngongonjale		
Caesalpinaceae	<i>Dialium</i> (poss. <i>pentandrum</i> or <i>zenkeri</i>)							Isangi	
Caesalpinaceae	<i>Dialium</i> sp.					Ekongoko	Lokake		
Caesalpinaceae	<i>Didelotia unifoliolata</i>								
Caesalpinaceae	<i>Erythrophleum suaveolens</i>								Efomi (ngbanda)
Caesalpinaceae	<i>Gilbertiodendron dewevrei</i>							Bolafa	Beemba (Belafa)
Caesalpinaceae	<i>Guibourtia demeusei</i>						Waka	Waka na mai	Bokongo (waka)
Caesalpinaceae	<i>Julbernardia</i> sp.								Wango
Caesalpinaceae	<i>Lebruni dendron</i>					Waka			
Caesalpinaceae	<i>Macrolobium coerueum</i>								Loanga
Caesalpinaceae	<i>Monopetalanthus microphyllum</i>								
Caesalpinaceae	<i>Monopetalanthus pteridophyllus</i>					Bonkese	Bonkense		
Caesalpinaceae	<i>Oxystigma oxyphilla</i> / <i>Pipria</i>							Ebenge (Ngombe)	
Caesalpinaceae	<i>Pachyelasma tessmannii</i>								Beleko
Caesalpinaceae	<i>Paramacrolobium coeruleum</i>					Ekongoko		Boanga/Ikokamanga	

Family	Scientific name	Dhetchuvi	Maisels	Reinartz	Inogwabini	Vernacular name Dhetchuvi	Vernacular name Maisels	Vernacular name Reinartz	Vernacular name Inogwabini
Caesalpinaceae	<i>Schotia bequaertii</i>								Bekumbo
Caesalpinaceae	<i>Schotia romii</i>								
Caesalpinaceae	<i>Scorodophloeus zenkeri</i>					Befili/Bofili		Bofili	Befili
Caesalpinaceae	<i>Tessmania lescrauwaetii</i>								
Chrysobalanaceae	<i>Magnistipula</i> sp.								
Chrysobalanaceae	<i>Parinari congensis</i>								
Chrysobalanaceae	<i>Parinari glabra</i>								Befale (Bokanja)
Clusiaceae	<i>Garcinia kola</i>					Botuna			Bompoma
Clusiaceae	<i>Garcinia ovalifolia</i>								Boolongo
Clusiaceae	<i>Garcinia punctata</i>								Besefe
Clusiaceae	<i>Garcinia smeathmannii</i>					Bolongo, Elongontete	Elongontete		
Clusiaceae	<i>Mammea africana</i>					Bolongo, Elongontete			Bakoli (Bosefe)
Clusiaceae	<i>Symphonia globulifera</i>						Bolongo	Bolongo	Balngo
Combretaceae	<i>Combretum</i> sp.								Besoi
Commelinaceae	<i>Palisota ambigua</i>							Botukumkombe	
Commelinaceae	<i>Palisota barteri</i>							Litete	Batetele (litetele)

Family	Scientific name	Dhetchuvi	Maisels	Reinartz	Inogwabini	Vernacular name Dhetchuvi	Vernacular name Maisels	Vernacular name Reinartz	Vernacular name Inogwabini
Lecythidaceae	<i>Napoleonana</i>								
Loganiaceae	<i>Strychnos sp.</i>								Nsamba
Malvaceae	<i>Microcos</i>								Befumbu
Marantaceae	<i>Haumania liebrechtsiana</i>								Bekombe
Marantaceae	<i>Haumania ssp</i>							Bekombe / Bokombe	
Marantaceae	<i>Megaphrynium macrostachyum</i>								Nkongo
Marantaceae	<i>Phrynium confertum</i>								Lokokoloko
Marantaceae	<i>Sarcophrynium ssp</i>								Lokongo
Marattiaceae	<i>Marattia fraxinea</i>					Batoyi ya boonga			
Melastomataceae	<i>Dichaetanthera corymbosa</i>					Likayese			
Melastomataceae	<i>Dissotis decumbens</i>								Ikasakenge
Meliaceae	<i>Carapa procera</i>								Bekalaka (Bokolo)
Meliaceae	<i>Entandophragma (poss. angolense)</i>							Lifake ngola	

Family	Scientific name	Dhetchuvi	Maisels	Reinartz	Inogwabini	Vernacular name Dhetchuvi	Vernacular name Maisels	Vernacular name Reinartz	Vernacular name Inogwabini
Papilionaceae	<i>Millettia psilopelata</i>							Bofote	Lilangi
Papilionaceae	<i>Millettia drastica</i>								
Papilionaceae	<i>Dalhousiea africana</i>					Iyela y'otamba			
Papilionaceae	<i>Angylocalyx pynaertii</i>						Bompembe		
Papilionaceae	<i>Millettia laurentii</i>					Wenge			
Papilionaceae	<i>Pterocarpus casteelsii</i>								Besulu (Besiyu)
Papilionaceae	<i>Pterocarpus sp.</i>							Bosule	
Pentadiplandraceae	<i>Pentadiplandra brazzae</i>					Bonsimi			
Phytolaccaceae	<i>Phytolacca dodecandra</i>					Lioo			
Piperaceae	<i>Piper cubeba</i>								Beleko
Piperaceae	<i>Piper umbelatum</i>								Balombo
Polygalaceae	<i>Carpolobia glabrescens</i>								
Rubiaceae	<i>Aidia micrantha</i>					Bonkene			Bokendu

Family	Scientific name	Dhetchuvi	Maisels	Reinartz	Inogwabini	Vernacular name Dhetchuvi	Vernacular name Maisels	Vernacular name Reinartz	Vernacular name Inogwabini
Rubiaceae	<i>Amaralia sherbourniae</i>								Indole
Rubiaceae	<i>Chomelia</i>								Bomposo
Rubiaceae	<i>Gaertnera paniculata</i>					Kafe			
Rubiaceae	<i>Massularia acuminata</i>					Bokeke			
Rubiaceae	<i>Mitragyna stipulosa</i>							Limpuku	
Rubiaceae	<i>Morinda lucida</i>								Bokakate
Rubiaceae	<i>Pavetta brachycalyx</i>					Bokeke			
Rubiaceae	<i>Psychotria sp.</i>								Bonsole
Rubiaceae	<i>Rutidea membranacea</i>					Ilongo soyo			
Rubiaceae	<i>Stipularia africana</i>					Vino			
Rubiaceae	<i>Virectaria major</i>								Lioko
Rutaceae	?					Bomengea			
Rutaceae	<i>Fagara lemairei</i>								Engondo
Sapindaceae	<i>Chytranthus carneus</i>								Bonsemi
Sapindaceae	<i>Eriocoelum sp.</i>						Boembe		
Sapindaceae	<i>Pancovia harmsiana</i>								Botende (be)
Sapindaceae	<i>Pancovia laurentii</i>					Botende			
Sapotaceae	<i>Chrysophyllum africanum</i>								Bolonge
Sapotaceae	<i>Chrysophyllum lacourtiana</i>							Bolonge/Bofambi	Bepambu (Bofambu)

2. Fish list.

Sites of collections listed in this section (by the AMNH) are shown (Fig. 2). The black dots are the collections made during 2005-2006 by the AMNH; the blue dots by Inogwabini in 2005, and the red dots the historical collections presently at the AMNH. The species of the latter are in the process of being written up by the AMNH. The list below is from the 2005 and 2006 work.

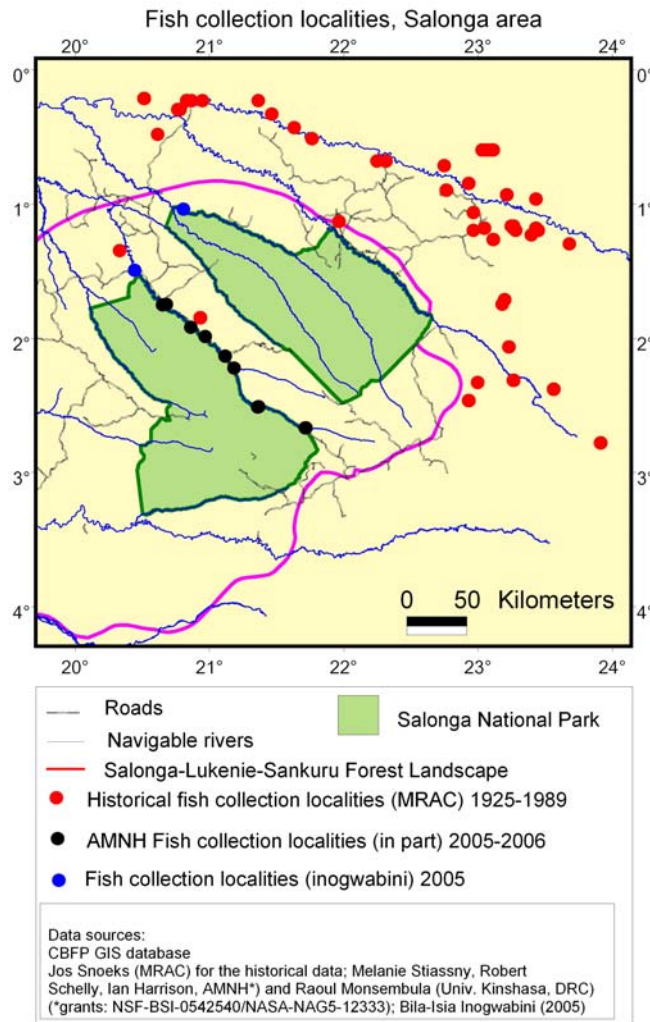


Fig. 2 Collection sites for fish, Salonga Landscape.

Sources: Fish

Harrison, I. (2007) *In litt.*

Inogwabini, B.I. (2005) Fish of the Salonga National Park, Democratic Republic of Congo: survey and conservation issues. *Oryx*, **39** : 1-5.

Schelly, R. & Monsembula, R. (2006). Rapport Preliminaire de mission sur l'etude ichtyologique des rivieres limitrophes du Parc National de la Salonga. In, p 35. American Museum of Natural History, and University of Kinshasa., New York and Kinshasa.

Schelley, R. (2007) *in litt.*

Stiassny, M. (2007) *In litt*

Fish List

Order	Family	Scientific	English	Local name	Status	Salonga AMNH	Inogwabini, updated by Schelley. Yellow if reported by fishermen only but not caught.
Characiformes	Alestiidae	<i>Alestes bimaculatus</i>			native		
Characiformes	Alestiidae	<i>Alestes liebrechtsii</i>					
Characiformes	Alestiidae	<i>Alestes grandisquamis</i>					
Characiformes	Alestiidae	<i>Alestes macrophthalmus</i>	Torpedo robber	Mokwe	native		
Characiformes	Alestiidae	<i>Brachypetersius altus</i>		Yacepi			
Characiformes	Alestiidae	<i>Brycinus "red adipose"</i>					
Characiformes	Alestiidae	<i>Brycinus sp.</i>					
Characiformes	Alestiidae	<i>Brycinus "2 spot"</i>					
Characiformes	Alestiidae	<i>Bryconaeathiops boulengeri</i>			native		
Characiformes	Alestiidae	<i>Duboisialestes "pink fin"</i>		Bokote			
Characiformes	Alestiidae	<i>Hydrocynus goliath</i>	Giant tigerfish	Mbenga	native		
Characiformes	Alestiidae	<i>Hepsetus odoe</i>					
Characiformes	Alestiidae	<i>Hydrocynus vittatus</i>	Tiger fish	Lokotombe	native		
Characiformes	Alestiidae	<i>Micralestes "caudal spot"</i>		Yacepi			
Characiformes	Alestiidae	<i>Phenacogrammus "yellow"</i>		Mpone			
Characiformes	Alestiidae	<i>Phenacogrammus altus</i>			native		
Characiformes	Alestiidae	<i>Phenacogrammus interruptus</i>	Congo tetra	Mpone	endemic		
Siluriformes	Amphiliidae	<i>Belonoglanis sp.</i>					
Siluriformes	Amphiliidae	<i>Undescribed catfish</i>					
Perciformes	Anabantidae	<i>Ctenopoma "dark"</i>		Molili			
Perciformes	Anabantidae	<i>Ctenopoma acutirostre</i>	Spotted ctenopoma		native		
Perciformes	Anabantidae	<i>Ctenopoma nigropannosum</i>	Twospot climbing perch		native		

Order	Family	Scientific	English	Local name	Status	Salonga AMNH	Inogwabini, updated by Schelley. Yellow if reported by fishermen only but not caught.
Perciformes	Anabantidae	<i>Ctenopoma oxyrhynchum</i>		Ekuma			
Perciformes	Anabantidae	<i>Ctenopoma pellegrini</i>		Mokenge, Molombe, Booli	native		
Perciformes	Anabantidae	<i>Microctenopoma ansorgii</i>	Ornate ctenopoma	Ekaba	native		
Cyprinodontiformes	Aplocheilidae	<i>Epiplatys sp.</i>					
Siluriformes	Bagridae	<i>Bagrus sp.</i>		Mpe			
Siluriformes	Clariotiidae?	<i>Auchenoglanis occidentalis</i>	Bubu		native		
Siluriformes	Clariotiidae	<i>Chrysichthys sp.</i>		Ingoso, Bosombo			
Siluriformes	Clariotiidae	<i>Chrysichthys cranchii</i>		Nkamba			
Siluriformes	Clariotiidae	<i>Chrysichthys gnathobagrus ornatus.</i>					
Siluriformes	Clariotiidae	<i>Chrysichthys ornatus</i>					
Siluriformes	Clariotiidae?	<i>Gephyroglanis congicus</i>			native		
Siluriformes	Clariotiidae	<i>Parauchenoglanis balayi</i>			native		
Siluriformes	Clariotiidae	<i>Parauchenoglanis guttatus</i>					
Siluriformes	Clariotiidae	<i>Parauchenoglanis punctatus</i>		Mboka	native		
Perciformes	Channidae	<i>Parachanna obscura</i>	Snake-head	Mungusu, Nsinga	native		
Perciformes	Cichlidae	<i>Hemichromis elongatus</i>		Mokeke, Bekeke, Lokulu			
Perciformes	Cichlidae	<i>Hemichromis stellifer</i>	Jewelfish	Ekondo	native		
Perciformes	Cichlidae	<i>Heterochromis multidens</i>		Lobundu, Ekondo	native		

Order	Family	Scientific	English	Local name	Status	Salonga AMNH	Inogwabini, updated by Schelley. Yellow if reported by fishermen only but not caught.
Perciformes	Cichlidae	<i>Nanochromis sp.</i>					
Perciformes	Cichlidae	<i>Oreochromis niloticus niloticus</i>	Nile tilapia		introduced		
Perciformes	Cichlidae	<i>Pelmatochromis nigrofasciatus</i>		Longondo	native		
Perciformes	Cichlidae	<i>Tilapia bilineata</i>		Libundu, Nkono	native		
Perciformes	Cichlidae	<i>Tilapia tholloni</i>		Libundu, Nkono	native		
Perciformes	Cichlidae	<i>Tylochromis sp.</i>		Lobundu			
Characiformes	Citharinidae	<i>Citharinus gibbosus</i>			native		
Characiformes	Citharinidae	<i>Citharinus macrolepis</i>		Lofonga, Mpongo	native		
Characiformes	Distichodontidae	<i>Distichodus "red flank"</i>					
Characiformes	Distichodontidae	<i>Distichodus decemmaculatus</i>		Ekalia	native		
Characiformes	Distichodontidae	<i>Distichodus fasciolatus</i>	Sharktail distichodus		native		
Characiformes	Distichodontidae	<i>Distichodus noboli</i>		Lokaka	native		
Characiformes	Distichodontidae	<i>Eugnathichthys macroterolepis</i>			native		
Characiformes	Distichodontidae	<i>Hemistichodus sp.</i>					
Characiformes	Distichodontidae	<i>Ichthyborus ornatus</i>			native		
Characiformes	Distichodontidae	<i>Mesoborus crocodilus</i>		Monsansala	native		
Characiformes	Distichodontidae	<i>Microstomatichthyoborus sp.</i>					
Characiformes	Distichodontidae	<i>Nannocharax sp 2</i>					

Order	Family	Scientific	English	Local name	Status	Salonga AMNH	Inogwabini, updated by Schelley. Yellow if reported by fishermen only but not caught.
Characiformes	Distichodontidae	<i>Neolebias sp.</i>					
Characiformes	Distichodontidae	<i>Nannocharax sp 1 mottled</i>					
Characiformes	Distichodontidae	<i>Neolebias trilineatus</i>	Threeline tetra		native		
Characiformes	Distichodontidae	<i>Phago boulengeri</i>		Muntentega	native		
Characiformes	Distichodontidae	<i>Xenocharax crassus</i>		Imposi	native		
Siluriformes	Clariidae	<i>Channallabes apus</i>	Eel catfish	Mokoko	native		
Siluriformes	Clariidae	<i>Clariallabes melas</i>			native		
Siluriformes	Clariidae	<i>Clarias sp. 1</i>		Ngolo			
Siluriformes	Clariidae	<i>Clarias sp. 2</i>		Iyongo			
Siluriformes	Clariidae	<i>Clarias sp. 3</i>		Lokambo			
Siluriformes	Clariidae	<i>Clarias angolensis</i>			native		
Siluriformes	Clariidae	<i>Clarias buthupogon</i>			native		
Siluriformes	Clariidae	<i>Clarias platycephalus</i>			native		
Siluriformes	Clariidae	<i>Dolichallabes microphthalmus</i>			native		
Siluriformes	Clariidae	<i>Heterobranchus longifilis</i>	Vundu	Pondo (Nyumi, Nsuni in Salonga)	native		
Clupeiformes	Clupeidae	<i>Congothrissa sp</i>		Ndakala			
Cypriniformes	Cyprinidae	<i>Barbus sp. stripe</i>					
Cypriniformes	Cyprinidae	<i>Barbus sp. shallow body</i>					
Cypriniformes	Cyprinidae	<i>Barbus hulstaerti</i>	Butterfly barb		native		
Cypriniformes	Cyprinidae	<i>Labeo cyclorhynchus</i>	Harlequin sharkminnow		native		
Perciformes	Eleotridae	<i>Eleotris sp.</i>					

Order	Family	Scientific	English	Local name	Status	Salonga AMNH	Inogwabini, updated by Schelley. Yellow if reported by fishermen only but not caught.
Characiformes	Hepsetidae	<i>Hepsetus odoe</i>	Kafue pike	Mvenge	native		
Siluriformes	Malapteruridae	<i>Malapterus sp.</i>	Electric catfish	Nina	native		
Siluriformes	Synodontidae	<i>Microsynodontis sp.</i>					
Siluriformes	Synodontidae	<i>Synodontis "1 spot"</i>					
Siluriformes	Synodontidae	<i>Synodontis sp.</i>		Likoko			
Siluriformes	Synodontidae	<i>Synodontis contractus</i>	Bugeye squeaker		native		
Siluriformes	Synodontidae	<i>Synodontis decorus</i>	Clown squeaker	Likoko ya nsolo	native		
Siluriformes	Synodontidae	<i>Synodontis flavitaeniatus</i>	Orangestriped squeaker		native		
Siluriformes	Synodontidae	<i>Synodontis nigriventris</i>	Blotched upsidedown catfish	Likoko	native		
Siluriformes	Synodontidae	<i>Synodontis schoutedeni</i>			native		
Osteoglossiformes	Mormyridae	<i>Brienomyrus sp.</i>		Mfumbe			
Osteoglossiformes	Mormyridae	<i>Gnathonemus sp.</i>		Mbesi			
Osteoglossiformes	Mormyridae	<i>Marcusenius sp</i>		Mfumbe			
Osteoglossiformes	Mormyridae	<i>Marcusenius friteli</i>			native		
Osteoglossiformes	Mormyridae	<i>Marcusenius moorii</i>			native		
Osteoglossiformes	Mormyridae	<i>Mormyrops anguilloides</i>	Cornish jack	Boole, Monjanda	native		
Osteoglossiformes	Mormyridae	<i>Mormyrops engystoma</i>			native		
Osteoglossiformes	Mormyridae	<i>Mormyrus caballus</i>		Mfumbe	native		
Osteoglossiformes	Mormyridae	<i>Petrocephalus balayi</i>					
Osteoglossiformes	Mormyridae	<i>Petrocephalus sp. Mottled</i>		Mfumbe			
Osteoglossiformes	Mormyridae	<i>Petrocephalus sp.</i>		Mfumbe			
Osteoglossiformes	Notopteridae	<i>Papyrocranus afer</i>	Reticulate knifefish	Ekombe	native		

Order	Family	Scientific	English	Local name	Status	Salonga AMNH	Inogwabini, updated by Schelley. Yellow if reported by fishermen only but not caught.
Osteoglossiformes	Notopteridae	<i>Papyrocranus congoensis</i>			native		
Osteoglossiformes	Notopteridae	<i>Xenomystus nigri</i>	African knifefish	Lofeke	native		
Osteoglossiformes	Pantodontidae	<i>Pantodon buchholzi</i>	Freshwater butterflyfish	Ihandjoli (Salonga" Isalakanga)	native		
Osteoglossiformes	Phractolaemidae	<i>Phractolaemus ansorgii</i>	Hingemouth		native		
Polypteriformes	Polypteridae	<i>Polypterus sp 2</i>		Nkonga ya nyama			
Polypteriformes	Polypteridae	<i>Polypterus delhezi</i>	Barred bichir	Nkonga, nkonga ya mbisi	native		
Polypteriformes	Polypteridae	<i>Polypterus palmas congicus</i>					
Lepidosireniiformes	Protopteridae	<i>Protopterus dolloi</i>	Slender lungfish	Djombo (Nsembe in Salonga)	native		
Siluriformes	Schilbeidae	<i>Eutropiellus debauwi</i>					
Siluriformes	Schilbeidae	<i>Pareutropius sp</i>		Likambo			
Siluriformes	Schilbeidae	<i>Schilbe sp. 2</i>		Mondele akenda			
Siluriformes	Schilbeidae	<i>Schilbe marmoratus</i>	Shoulderspot catfish	Lolango	native		
?	Tetraodontidae	<i>Tetraodon miurus</i>	Puffer fish		native		
Characiformes	Distichodontidae	<i>Belanophago hutsebouti</i>		Mokaanga			
Osteoglossiformes	Mormyridae	<i>Cyphomyrus sp.</i>					

3. Bird List.

Two sources were found for birds (although we know there are others but they were not found). BirdLife International has a list for Salonga (generalized) but one survey in 1992 (Cruickshank & Gautier 1992) was carried out from Botsima, in the northern sector of the Park (Fig. 3)

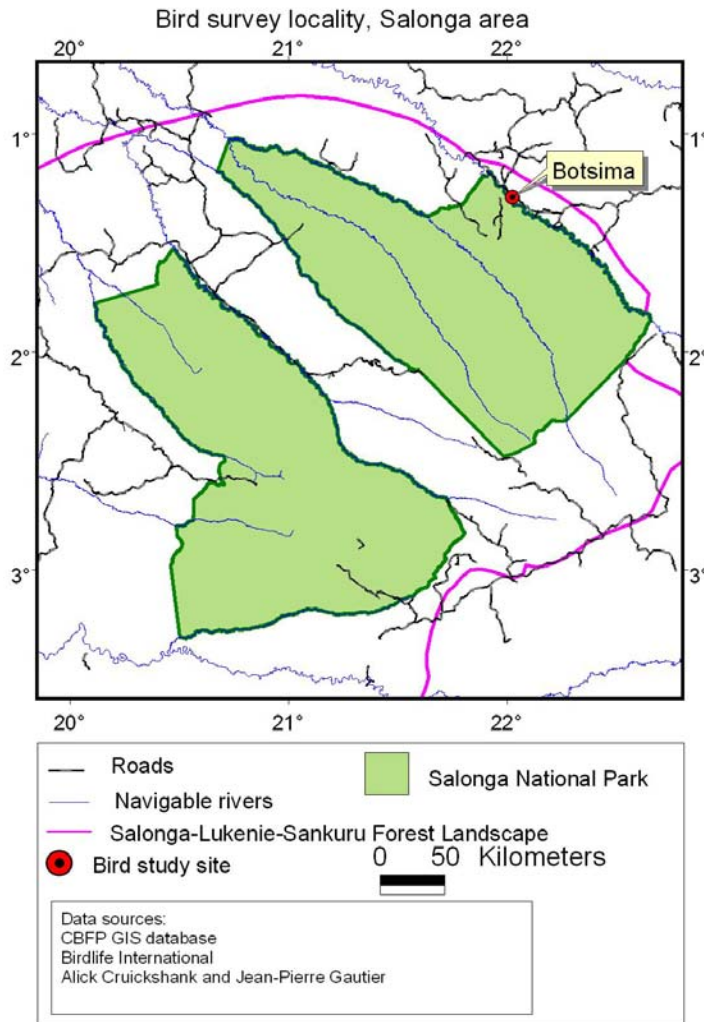


Fig. 3 Study site for birds, Salonga Landscape.

Sources: birds

BirdLife International (2007) BirdLife's online World Bird Database: the site for bird conservation. Version 2.1. Cambridge, UK: BirdLife International. Available: <http://www.birdlife.org/datazone/sites/index.html?action=SitHTMDetails.asp&sid=6060&m=0> (accessed 30/7/2007)

Cruickshank, A.J. & Gautier, J.P. (1992). Preliminary results from an Inventory of Bird Species of the Salonga National Park, Zaire. In, p 11. Unpublished report.

Bird List

<i>Scientific name</i>	ENGLISH	FRENCH	Note	EBA list	Cruickshank & Gautier
<i>Phalacrocorax africanus</i>	Reed Cormorant	Cormoran africain			
<i>Tigriornis leucolophus</i>	White-crested Tiger Heron	Butor à crête blanche	resident		
<i>Butorides striatus</i>	Green-backed Heron	Héron à dos vert			
<i>Ardea purpurea</i>	Purple Heron	Héron pourpré			
<i>Ardea goliath</i>	Goliath Heron	Héron goliath			
<i>Scopus umbretta</i>	Hamerkop	Ombrette			
<i>Ciconia abdimii</i>	Abdim's Stork	Cigogne d'Abdim			
<i>Ciconia episcopus</i>	Woolly-necked Stork	Cigogne épiscopale			
<i>Ciconia ciconia</i>	White Stork	Cigogne blanche			
<i>Plegadis falcinellus</i>	Glossy Ibis	Ibis falcinelle	resident		
<i>Bostrychia hagedash</i>	Hadada	Ibis hagedash			
<i>Bostrychia rara</i>	Spot-breasted Ibis	Ibis vermiculé	resident		
<i>Pteronetta hartlaubii</i>	Hartlaub's Duck	Canard de Hartlaub	resident		
<i>Milvus migrans</i>	Black (Yellow-billed) Kite	Milan noir			
<i>Gypohierax angolensis</i>	Palm-nut Vulture	Vautour palmiste			
<i>Dryotriorchis spectabilis</i>	Congo Serpent Eagle	Aigle serpenteaire du Congo	resident		
<i>Polyboroides typus</i>	Gymnogone	Gymnogène d'Afrique			
<i>Accipiter erythropus</i>	Western Little Sparrowhawk	Epervier de Hartlaub	resident		
<i>Accipiter castanilius</i>	Chestnut-flanked Sparrowhawk	Autour à flancs roux	resident		
<i>Urotriorchis macrourus</i>	Long-tailed Hawk	Autour à longue queue	resident		
<i>Kaupifalco monogrammicus</i>	Lizard Buzzard	Buse unibande			
<i>Spizaetus africanus</i>	Cassin's Hawk Eagle	Aigle-autour de Cassin	resident		
<i>Stephanoaetus coronatus</i>	Crowned Eagle	Aigle couronné			
<i>Fringilla lathami</i>	Forest Francolin	Francolin de Latham	resident		
<i>Afropavo congensis</i>	Congo Peacock	Paon du Congo	resident		
<i>Guttera pucherani</i>	Crested Guineafowl	Pintade huppée			
<i>Himantornis haematopus</i>	Nkulengu Rail	Râle à pieds rouges	resident		
<i>Sarothrura pulchra</i>	White-spotted Flufftail	Râle perlé	resident		

<i>Scientific name</i>	ENGLISH	FRENCH	Note	EBA list	Cruickshank & Gautier
<i>Sarothrura elegans</i>	Buff-spotted Flufftail	Râle ponctué			
<i>Sarothrura rufa</i>	Red-chested Flufftail	Râle à camail			
<i>Canirallus oculeus</i>	Grey-throated Rail	Râle à gorge grise	resident		
<i>Podica senegalensis</i>	African Finfoot	Grébifoulque d'Afrique			
<i>Vanellus superciliosus</i>	Brown-chested Wattled Plover	Vanneau à poitrine châtain			
<i>Actitis hypoleucos</i>	Common Sandpiper	Chevalier guignette			
<i>Columba unicincta</i>	Afep Pigeon	Pigeon gris	resident		
<i>Columba delegorguei</i>	Bronze-naped Pigeon	Pigeon de Délégorgue	resident		
<i>Turtur afer</i>	Blue-spotted Dove	Emeraudine à bec rouge			
<i>Turtur tympanistria</i>	Tambourine Dove	Tourterelle tambourette			
<i>Turtur brehmeri</i>	Blue-headed Wood Dove	Tourterelle à tête bleue	resident		
<i>Treron australis</i>	Green Pigeon	Pigeon vert			
<i>Psittacus erithacus</i>	African Grey Parrot	Perroquet Jacko	resident		
<i>Agapornis swindernianus</i>	Black-collared Lovebird	Inséparable à collier noir	resident		
<i>Tauraco schuetti</i>	Black-billed Turaco	Touraco à bec noir			
<i>Corythaeola cristata</i>	Great Blue Turaco	Touraco géant			
<i>Cuculus solitarius</i>	Red-chested Cuckoo	Coucou solitaire			
<i>Cuculus clamosus</i>	Black Cuckoo	Coucou criard			
<i>Cercococcyx mechowi</i>	Dusky Long-tailed Cuckoo	Coucou de Mechow	resident		
<i>Cercococcyx olivinus</i>	Olive Long-tailed Cuckoo	Coucou olivâtre	resident		
<i>Chrysococcyx flavigularis</i>	Yellow-throated Green Cuckoo	Coucou à gorge jaune	resident		
<i>Chrysococcyx klaas</i>	Klaas's Cuckoo	Coucou de Klaas			
<i>Chrysococcyx caprius</i>	Didric Cuckoo	Coucou didric			
<i>Ceuthmochares aereus</i>	Green Coucal	Coucal à bec jaune			
<i>Centropus anselli</i>	Gaboon Coucal	Coucal du Gabon	resident		
<i>Otus icterorhynchus</i>	Sandy Scops Owl	Petit-Duc à bec jaune	resident		
<i>Jubula lettii</i>	Maned Owl	Duc à crinière	resident		
<i>Bubo poensis</i>	Fraser's Eagle Owl	Grand-duc à aigrettes	resident		

<i>Scientific name</i>	ENGLISH	FRENCH	Note	EBA list	Cruikshank & Gautier
<i>Bubo leucostictus</i>	Akun Eagle Owl	Grand-duc tacheté	resident		
<i>Scotopelia peli</i>	Pel's Fishing Owl	Chouette-pêcheuse de Pel			
<i>Scotopelia bouvieri</i>	Bouvier's Fishing Owl	Chouette-pêcheuse de Bouvier	resident		
<i>Glaucidium tephronotum</i>	Red-chested Owlet	Chevêchette à pieds jaunes	resident		
<i>Glaucidium sjostedti</i>	Sjöstedt's Barred Owlet	Chevêchette à queue barrée	resident		
<i>Strix woodfordii</i>	Wood Owl	Hulotte africaine			
<i>Caprimulgus binotatus</i>	Brown Nightjar	Engoulevent à deux taches	resident		
<i>Caprimulgus batesi</i>	Bates's Nightjar	Engoulevent de Bates	resident		
<i>Macrodipteryx vexillarius</i>	Pennant-winged Nightjar	Engoulevent porte-étendard			
<i>Telacanthura ussheri</i>	Mottled Spinetail	Martinet d'Ussher			
<i>Rhaphidura sabini</i>	Sabine's Spinetail	Martinet de Sabine	resident		
<i>Neafrapus cassini</i>	Cassin's Spinetail	Martinet à ventre blanc	resident		
<i>Cypsiurus parvus</i>	African Palm Swift	Martinet des palmiers			
<i>Apus pallidus</i>	Pallid Swift				
<i>Apus apus</i>	European Swift	Martinet noir			
<i>Apus affinis</i>	Little Swift	Martinet des maisons			
<i>Apus caffer</i>	African White-rumped Swift	Martinet cafre			
<i>Apaloderma narina</i>	Narina Trogon	Trogon narina			
<i>Apaloderma aequatoriale</i>	Bare-cheeked Trogon	Trogon à joues jaunes	resident		
<i>Alcedo quadibrachys</i>	Shining-blue Kingfisher	Martin-pêcheur azuré			
<i>Alcedo cristata</i>	Malachite Kingfisher	Martin-pêcheur huppé			
<i>Alcedo leucogaster</i>	White-bellied Kingfisher	Martin-chasseur à ventre blanc	resident		
<i>Ceyx lecontei</i>	Dwarf Kingfisher	Martin-chasseur à tête rousse	resident		
<i>Ceyx pictus</i>	Pygmy Kingfisher	Martin-chasseur pygmée			
<i>Halcyon badia</i>	Chocolate-backed Kingfisher	Martin-chasseur marron	resident		
<i>Halcyon malimbica</i>	Blue-breasted Kingfisher	Martin-chasseur à poitrine bleue			
<i>Megaceryle maxima</i>	Giant Kingfisher	Martin-pêcheur géant			
<i>Merops muelleri</i>	Blue-headed Bee-eater	Guêpier à tête bleue	resident		

<i>Scientific name</i>	ENGLISH	FRENCH	Note	EBA list	Cruickshank & Gautier
<i>Merops gularis</i>	Black Bee-eater	Guêpier noir	resident		
<i>Eurystomus glaucurus</i>	Broad-billed Roller	Rolle africain			
<i>Eurystomus gularis</i>	Blue-throated Roller	Rolle à gorge bleue	resident		
<i>Tropicranus albocristatus</i>	White-crested Hornbill	Calao à huppe blanche	resident		
<i>Tockus hartlaubi</i>	Black Dwarf Hornbill	Calao pygmée à bec noir	resident		
<i>Tockus camurus</i>	Red-billed Dwarf Hornbill	Calao pygmée à bec rouge	resident		
<i>Tockus fasciatus</i>	Pied Hornbill	Calao longibande	resident		
<i>Bycanistes fistulator</i>	White-tailed Hornbill	Calao siffleur	resident		
<i>Bycanistes cylindricus</i>	White-thighed Hornbill	Calao à joues brunes	resident		
<i>Ceratogymna atrata</i>	Black-wattled Hornbill	Calao à casque noir	resident		
<i>Gymnobucco sladeni</i>	Sladen's Barbet	Barbican de Sladen	resident		
<i>Buccanodon duchaillui</i>	Yellow-spotted Barbet	Barbican à taches jaunes	resident		
<i>Pogoniulus scolopaceus</i>	Speckled Tinkerbird	Barbion grivelé	resident		
<i>Pogoniulus bilineatus</i>	Golden-rumped Tinkerbird	Barbion à croupion jaune			
<i>Pogoniulus subsulphureus</i>	Yellow-throated Tinkerbird	Barbion à gorge jaune	resident		
<i>Pogoniulus atroflavus</i>	Red-rumped Tinkerbird	Barbion à croupion rouge	resident		
<i>Tricholaema frontata</i>	Miombo Pied Barbet	Barbican du miombo	resident		
<i>Tricholaema hirsuta</i>	Hairy-breasted Barbet	Barbican hérissé			
<i>Trachyphonus purpuratus</i>	Yellow-billed Barbet	Barbu pourpré	resident		
<i>Prodotiscus insignis</i>	Cassin's Honeyguide	Indicateur pygmée	resident		
<i>Indicator maculatus</i>	Spotted Honeyguide	Indicateur tacheté	resident		
<i>Indicator willcocksii</i>	Willcocks's Honeyguide	Indicateur de Willcocks	resident		
<i>Melichneutes robustus</i>	Lyre-tailed Honeyguide	Indicateur à queue-en-lyre	resident		
<i>Sasia africana</i>	Piculet	Picumne de Verreaux	resident		
<i>Campethera nivosa</i>	Buff-spotted Woodpecker	Pic tacheté	resident		
<i>Campethera caroli</i>	Brown-eared Woodpecker	Pic à oreillons bruns	resident		
<i>Dendropicos gabonensis</i>	Gabon Woodpecker	Pic du Gabon	resident		
<i>Thripias xantholophus</i>	Yellow-crested Woodpecker	Pic à huppe jaune	resident		

<i>Scientific name</i>	ENGLISH	FRENCH	Note	EBA list	Cruickshank & Gautier
<i>Smithornis rufolateralis</i>	Rufous-sided Broadbill	Eurylaime à flancs roux	resident		
<i>Psalidoprocne nitens</i>	Square-tailed Saw-wing	Hirondelle hérissée à queue courte	resident		
<i>Hirundo nigrita</i>	White-throated Blue Swallow	Hirondelle noire	resident		
<i>Hirundo rustica</i>	European Swallow	Hirondelle de cheminée			
<i>Motacilla aguimp</i>	African Pied Wagtail	Bergeronnette pie			
<i>Coracina azurea</i>	Blue Cuckoo-shrike	Echenilleur bleu	resident		
<i>Andropadus virens</i>	Little Greenbul	Bulbul verdâtre			
<i>Andropadus gracilis</i>	Little Grey Greenbul	Bulbul gracile	resident		
<i>Andropadus ansorgei</i>	Ansorge's Greenbul	Bulbul d'Ansorge	resident		
<i>Andropadus curvirostris</i>	Cameroon Sombre Greenbul	Bulbul curvirostre	resident		
<i>Andropadus latirostris</i>	Yellow-whiskered Greenbul	Bulbul à moustaches jaunes			
<i>Calyptocichla serina</i>	Golden Greenbul	Bulbul doré	resident		
<i>Baeopogon indicator</i>	Honeyguide Greenbul	Bulbul à queue blanche	resident		
<i>Baeopogon clamans</i>	Sjöstedt's Honeyguide Greenbul	Bulbul bruyant	resident		
<i>Ixonotus guttatus</i>	Spotted Greenbul	Bulbul tacheté	resident		
<i>Thescelocichla leucopleura</i>	Swamp Palm Bulbul	Bulbul à queue tachetée	resident		
<i>Pyrrhurus scandens</i>	Leaflove	Bulbul à queue rousse	resident		
<i>Phyllastrephus icterinus</i>	Icterine Greenbul	Bulbul ictérin	resident		
<i>Bleda syndactyla</i>	Bristlebill	Bulbul moustac à queue rousse	resident		
<i>Bleda eximia</i>	Green-tailed Bristlebill	Bulbul moustac à tête olive	resident		
<i>Criniger calurus</i>	Red-tailed Greenbul	Bulbul huppé à barbe blanche	resident		
<i>Pycnonotus barbatus</i>	Common Bulbul	Bulbul aux lunettes			
<i>Neocossyphus poensis</i>	White-tailed Ant Thrush	Grive fourmilière à queue blanche	resident		
<i>Stizorhina fraseri</i>	Rufous Ant Thrush	Grive fourmilière roux	resident		
<i>Alethe diademata</i>	Fire-crested Alethe	Alèthe à huppe rousse	resident		
<i>Alethe poliocephala</i>	Brown-chested Alethe	Alèthe à poitrine brune			
<i>Stiphornis erythrothorax</i>	Forest Robin	Rougegorge de forêt	resident		
<i>Eremomela badiceps</i>	Rufous-crowned Eremomela	Érémomèle à tête brune	resident		

<i>Scientific name</i>	ENGLISH	FRENCH	Note	EBA list	Cruikshank & Gautier
<i>Sylvietta virens</i>	Green Crombec	Crombec verte	resident		
<i>Sylvietta denti</i>	Lemon-bellied Crombec	Crombec à gorge tachetée	resident		
<i>Macrosphenus concolor</i>	Grey Longbill	Fauvette nasique grise	resident		
<i>Macrosphenus flavicans</i>	Yellow Longbill	Fauvette nasique jaune	resident		
<i>Phylloscopus trochilus</i>	Willow Warbler	Pouillot fitis			
<i>Hylia violacea</i>	Violet-backed Hylia	Hylia à dos violet	resident		
<i>Hylia prasina</i>	Green Hylia	Hylia verte	resident		
<i>Cisticola anonymus</i>	Chattering Cisticola	Cisticole babillarde	resident		
<i>Apalis rufogularis</i>	Buff-throated Apalis	Apalis à gorge rousse	resident		
<i>Apalis goslingi</i>	Gosling's Apalis	Apalis de Gosling	resident		
<i>Camaroptera brevicaudata</i>	Grey-backed camaroptera				
<i>Camaroptera supercilialis</i>	Yellow-browed Camaroptera	Camaroptère à sourcils	resident		
<i>Camaroptera chloronota</i>	Olive-green Camaroptera	Camaroptère à dos vert	resident		
<i>Fraseria ocreata</i>	Forest Flycatcher	Gobemouche forestier	resident		
<i>Fraseria cinerascens</i>	White-browed Forest Flycatcher	Gobemouche à sourcils blancs	resident		
<i>Muscicapa olivascens</i>	Olivaceous Flycatcher	Gobemouche olivâtre	resident		
<i>Muscicapa cassini</i>	Cassin's Grey Flycatcher	Gobemouche de Cassin	resident		
<i>Muscicapa sethsmithi</i>	Yellow-footed Flycatcher	Gobemouche de Seth-Smith	resident		
<i>Muscicapa comitata</i>	Dusky Blue Flycatcher	Gobemouche ardoisé	resident		
<i>Muscicapa infuscata</i>	Sooty Flycatcher	Gobemouche fuligineux	resident		
<i>Myioparus griseigularis</i>	Grey-throated Flycatcher	Gobemouche à gorge grise	resident		
<i>Megabyas flammulatus</i>	Shrike-Flycatcher	Gobemouche écorcheur	resident		
<i>Dyaphorophya castanea</i>	Chestnut Wattle-eye	Gobemouche caronculé châtain			
<i>Dyaphorophya tonsa</i>	White-spotted Wattle-eye	Gobemouche caronculé à taches blanches			
<i>Platysteira cyanea</i>	Scarlet-spectacled Wattle-eye	Gobemouche caronculé à collier	resident		
<i>Erythrocerus mccalli</i>	Chestnut-capped Flycatcher	Gobemouche à tête rousse	resident		
<i>Elminia longicauda</i>	Blue Flycatcher	Gobemouche bleu			
<i>Elminia nigromitrata</i>	Dusky Crested Flycatcher	Gobemouche huppé à tête noire	resident		

<i>Scientific name</i>	ENGLISH	FRENCH	Note	EBA list	Cruickshank & Gautier
<i>Trochocercus nitens</i>	Blue-headed Crested Flycatcher	Gobemouche huppé noir	resident		
<i>Terpsiphone viridis</i>	Paradise Flycatcher	Gobemouche paradis			
<i>Terpsiphone rufocinerea</i>	Rufous-vented Paradise Flycatcher	Gobemouche paradis du Congo	resident		
<i>Terpsiphone rufiventer</i>	Red-bellied Paradise Flycatcher	Gobemouche paradis à ventre roux	resident		
<i>Illadopsis fulvescens</i>	Brown Illadopsis	Grive-akalat brune	resident		
<i>Illadopsis rufipennis</i>	Pale-breasted Illadopsis	Grive-akalat à poitrine blanche			
<i>Illadopsis albipectus</i>	Scaly-breasted Illadopsis	Grive-akalat à poitrine écaillée	resident		
<i>Parus funereus</i>	Dusky Tit	Mésange ardoise	resident		
<i>Anthoscopus flavifrons</i>	Yellow-fronted Penduline Tit	Rémiz à front jaune	resident		
<i>Pholidornis rufiae</i>	Tit-hylia	Astrild-mésange	resident		
<i>Anthreptes fraseri</i>	Fraser's Sunbird	Souimanga de Fraser	resident		
<i>Anthreptes longuemarei</i>	Violet-backed Sunbird	Souimanga violet			
<i>Anthreptes aurantium</i>	Violet-tailed Sunbird	Souimanga à queue violette	resident		
<i>Anthreptes rectirostris</i>	Yellow-chinned Sunbird	Souimanga à gorge jaune	resident		
<i>Anthreptes collaris</i>	Collared Sunbird	Souimanga à collier			
<i>Nectarinia seimundi</i>	Little Green Sunbird	Nectarin de Seimund	resident		
<i>Nectarinia batesi</i>	Bates's Sunbird	Nectarin de Bates	resident		
<i>Nectarinia olivacea</i>	Olive Sunbird	Nectarin olivâtre			
<i>Nectarinia reichenbachii</i>	Reichenbach's Sunbird	Souimanga de Reichenbach	resident		
<i>Nectarinia cyanolaema</i>	Blue-throated Brown Sunbird	Souimanga à gorge bleue	resident		
<i>Nectarinia rubescens</i>	Green-throated Sunbird	Souimanga à gorge verte	resident		
<i>Nectarinia chloropygia</i>	Olive-bellied Sunbird	Souimanga à ventre olive			
<i>Nectarinia minulla</i>	Tiny Sunbird	Souimanga minulle	resident		
<i>Nectarinia johannae</i>	Johanna's Sunbird	Souimanga de Jeanne	resident		
<i>Nectarinia superba</i>	Superb Sunbird	Souimanga superbe	resident		
<i>Oriolus brachyrhynchus</i>	Western Black-headed Oriole	Loriot à tête noire occidental	resident		
<i>Oriolus nigripennis</i>	Black-winged Oriole	Loriot à ailes noires	resident		
<i>Dryoscopus sabinii</i>	Sabine's Puffback	Cubla à gros bec	resident		

<i>Scientific name</i>	ENGLISH	FRENCH	Note	EBA list	Cruickshank & Gautier
<i>Laniarius leucorhynchus</i>	Sooty Boubou	Gonolek fuligineux	resident		
<i>Nicator chloris</i>	Western Nicator	Nicator à gorge blanche	resident		
<i>Nicator vireo</i>	Yellow-throated Nicator	Nicator vert	resident		
<i>Prionops caniceps</i>	Northern Red-billed Helmet Shrike	Bagadais à bec rouge	resident		
<i>Dicrurus atripennis</i>	Shining Drongo	Drongo de forêt	resident		
<i>Dicrurus adsimilis</i>	Fork-tailed Drongo	Drongo brillant			
<i>Onychognathus fulgidus</i>	Forest Chestnut-winged Starling	Etourneau roupenne	resident		
<i>Lamprotornis purpureiceps</i>	Purple-headed Glossy Starling	Merle métallique à tête pourprée	resident		
<i>Ploceus aurantius</i>	Orange Weaver	Tisserin orangé	resident		
<i>Ploceus nigerrimus</i>	Vieillot's Black Weaver	Tisserin noir de Vieillot	resident		
<i>Ploceus tricolor</i>	Yellow-mantled Weaver	Tisserin tricolore	resident		
<i>Malimbus nitens</i>	Blue-billed Malimbe	Malimbe à bec bleu	resident		
<i>Malimbus malimbicus</i>	Crested Malimbe	Malimbe huppé	resident		
<i>Malimbus cassini</i>	Cassin's Malimbe	Malimbe de Cassin	resident		
<i>Malimbus rubricollis</i>	Red-headed Malimbe	Malimbe à tête rouge	resident		
<i>Malimbus erythrogaster</i>	Red-bellied Malimbe	Malimbe à ventre rouge	resident		
<i>Malimbus coronatus</i>	Red-crowned Malimbe	Malimbe couronné	resident		
<i>Parmoptila rubrifrons</i>	Red-faced Flower-pecker	Astrild fourmilier à front rouge	resident		
<i>Nigrita canicapilla</i>	Grey-crowned Negrofinch	Sénégalin nègre			
<i>Nigrita luteifrons</i>	Pale-fronted Negrofinch	Sénégalin nègre à front jaune	resident		
<i>Nigrita bicolor</i>	Chestnut-breasted Negrofinch	Sénégalin brun à ventre roux	resident		
<i>Nigrita fusconota</i>	White-breasted Negrofinch	Sénégalin brun à ventre blanc	resident		
<i>Pyrenestes ostrinus</i>	Black-bellied Seed-cracker	Grosbec ponceau à ventre noir			
<i>Spermophaga poliolegens</i>	Grant's Bluebill	Grosbec à front rouge	resident		
<i>Spermophaga haematina</i>	Bluebill	Grosbec sanguin	resident		
<i>Estrilda melpoda</i>	Orange-cheeked Waxbill	Astrild à joues oranges			
<i>Lonchura cucullata</i>	Bronze Mannikin	Spermète nonnette			

4. Mammals

Several sources have been used for this list. The work of the Botsima research station on monkeys has informed on a small part of the northern sector of the Park, the work of the MIKE programme on elephants, bonobos, and other large mammals (published both in a MIKE report in 2005 and as Blake *et al* in 2007) and Hart *et al.* (in press) on the whole of the Park, and that of Inogwabini, mostly out of Etate, has also been added. The figures are taken from the different reports cited below. The table at the end includes the up-to-date IUCN and CITES listing of the species.

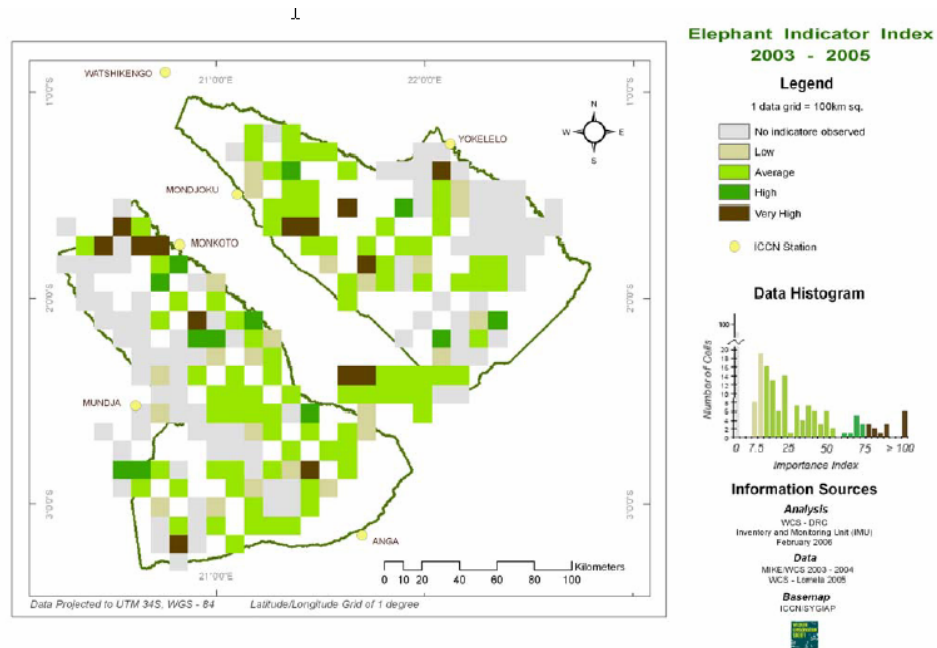


Fig. 4. Map of elephant dung by 10x10 grid square in the parts of Salonga National Park that were sampled during the MIKE surveys, 2003-2004 and subsequent surveys by WCS. (Hart 2006)

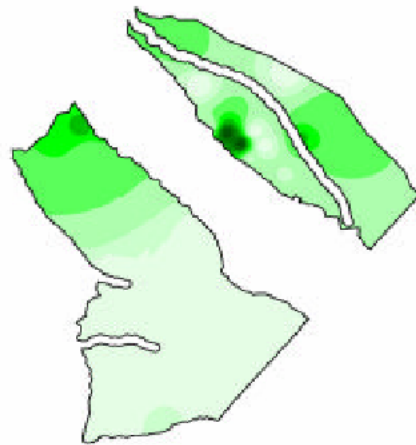


Fig. 5. Interpolation map of elephant dung in the parts of Salonga National Park that were sampled during the MIKE surveys, 2003-2004. (MIKE 2005)

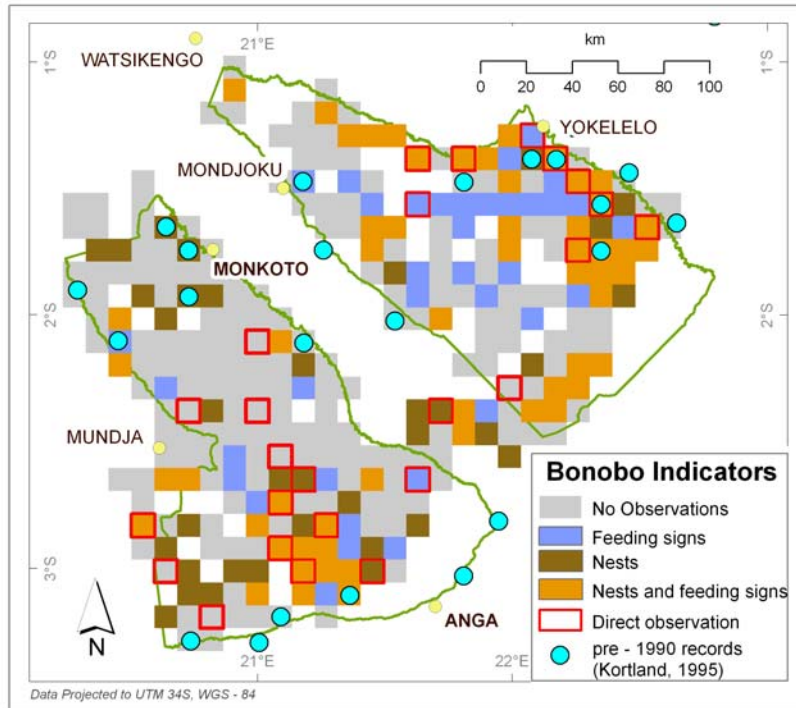


Fig. 6. Map of bonobo sign by 10x10 grid square in the parts of Salonga National Park in the parts of Salonga National Park that were sampled during the MIKE surveys, 2003-2004. (MIKE 2005) and subsequently (Hart *et al* 2007)

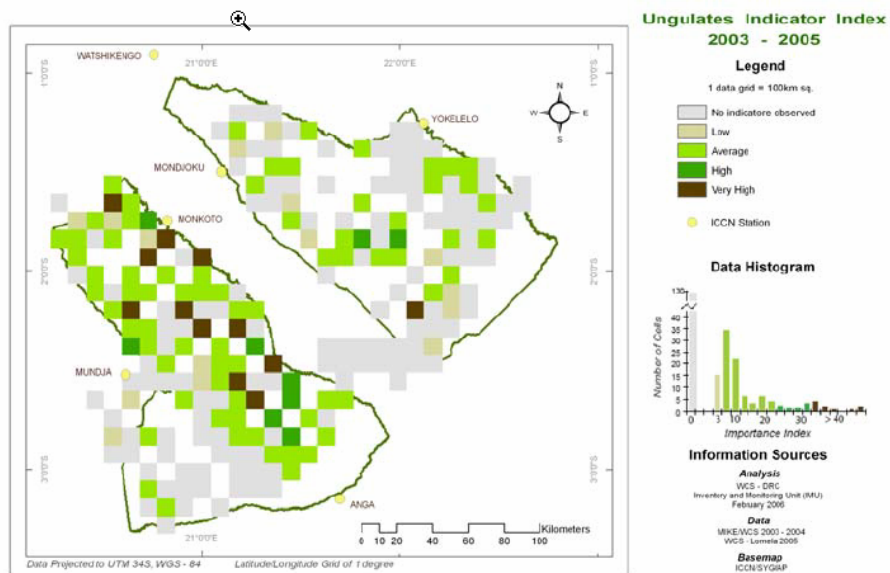


Fig. 7. Map of ungulate sign by 10x10 grid square in the parts of Salonga National Park in the parts of Salonga National Park that were sampled during the MIKE surveys, 2003-2004. (MIKE 2005) and subsequently (Hart 2006)

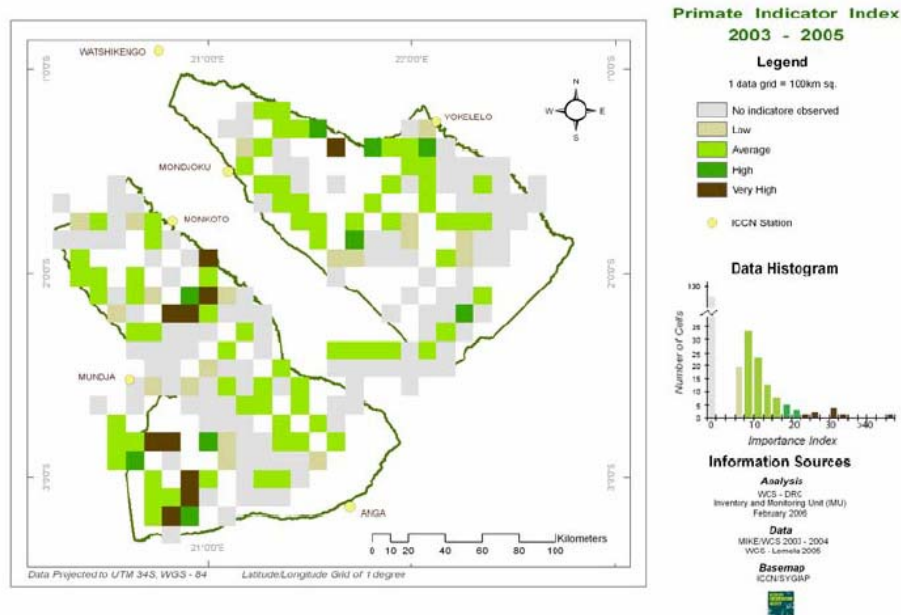


Fig. 8. Map of monkey sightings sign by 10x10 grid square in the parts of Salonga National Park n the parts of Salonga National Park that were sampled during the MIKE surveys, 2003-2004. (MIKE 2005) and subsequently (Hart *et al* 2007)

Sources: large mammals

CITES. (2007). Appendices I, II and III valid from 3 May 2007. In. CITES Secretariat & UNEP-WCMC., Geneva, Switzerland and Cambridge, UK.

Hart, J., Grossman, F., Vosper, A. & Ilanga, J. (in press). Human hunting and its impact on bonobo in the Salonga National Park, D.R. Congo. In *The Bonobos: Behaviour, Ecology, And Conservation*. (ed T.a.T. Furuichi, J.A.M). Springer Publishing.

Hart, J. (2006). WCS biodiversity Surveys in the Salonga National Park 2003 – 2006: Faunal distribution and abundance and impact of hunting A Summary of major findings and recommendations. Inventory and Monitoring Unit (IMU) WCS. 14pp.

Inogwabini, B.I. (2006) A Preliminary Checklist of Mammals and Plants: Conservation Status of Some Species in Salonga National Park. *Endangered Species Update*, **23**: 104-17.

IUCN. (2006). 2006 IUCN Red List of Threatened Species. In, Cambridge, U. K.

Maisels, F. Unpublished field notes

Maisels, F. & Gautier-Hion, A. (1994). Why are Caesalpinioideae so important for monkeys in hydromorphic rainforests of the Zaïre basin? In *The Nitrogen Factor* (ed J.I. Sprent, & McKey, D.), Vol. V, pp. 189-204. Royal Bot. Gdns, Kew., London.

MIKE. (2005). Central African forests: Final report on population surveys (2003 – 2004). In, p 122. MIKE- CITES- WCS, Washington DC, USA.

Steel (2007) Unpublished list of hunted species.

Mammal list (mostly larger species)

Order	Scientific	English	French	Vernacular Lingala	Vernacular Nkundo	Vernacular: Ndengese	Hart et al	Inogwabini	Maisels et al	CITE S 2007	IUCN 2006a	IUCN 2006b
Artiodactyla	<i>Cephalopus callipygus</i>	Peter's duiker	Cépholophe de Peters	Bofala (Mbengele), Mpambi (Hart)							LR/nt	
Artiodactyla	<i>Cephalopus dorsalis</i>	Bay duiker	Céphalophe bai	Bombende (Nkulufa) (Bofala: Hart)						II	LR/nt	
Artiodactyla	<i>Cephalopus monticola</i>	Blue duiker	Céphalope bleu	Mboloko						II	LR/lc	
Artiodactyla	<i>Cephalopus nigrifrons</i>	Black-fronted duiker	Céphalophe à front noir	Mpambi, Bombene, Nkulufa Nginda							LR/nt	
Artiodactyla	<i>Cephalopus sylvicultor</i>	Yellow-backed duiker	Céphalophe à dos jaune	Lisoko, Mbende (Hart)						II	LR/nt	
Artiodactyla	<i>Syncerus caffer nanus</i>	Forest buffalo	Buffle de forêt	Ngombo, Mpakasa							LR/cd	
Artiodactyla	<i>Tragelaphus euryceros</i>	Bongo	Bongo	Mpanga							LR/nt	
Artiodactyla	<i>Tragelaphus spekii</i>	Sitatunga	Sitatunga	Mbuli							LR/nt	
Artiodactyla	<i>Hippopotamus amphibius</i>	Hippopotamus	Hippopotame	Ngubu						ii	VU	A4cd
Artiodactyla	<i>Potamochoerus porcus</i>	Red river hog	Potamochère	Nsombo							LR/lc	

Order	Scientific	English	French	Vernacular Lingala	Vernacular Nkundo	Vernacular: Ndengese	Hart et al	Inogwabini	Maisels et al	CITES 2007	IUCN 2006a	IUCN 2006b
Insectivora	<i>Petrodromus tordayi</i> (<i>tetradactylus</i> in <i>Kingdon</i>)	Four-toed Elephant shrew	Petrodomus	Litoko	Litoko	N'Toko					?	
Insectivora	<i>Crocidura congobelgica</i>	White-toothed shrew	Crocidure	Bosutumpo							LC	
Insectivora	<i>Potamogale velox</i>	Giant otter shrew	Potamogale	Yongo (Esofe), Yoongo	Yongo	Inswe					LC	
Pholidota	<i>Phataginus tricuspis</i>	White-bellied pangolin	Pangolin à écailles tricuspidés	Nkalamonyo							LR/lc	
Pholidota	<i>Smutsia gigantea</i>	Giant pangolin	Pangolin géant	Nkanga, Ikaka							LR/lc	
Pholidota	<i>Uromanis tetradactyla</i>	Long-tailed pangolin	Pangolin à longue queue	Nkalamonyo							LR/lc	
Primates	<i>Allenopithecus nigroviridis</i>	Allen's Swamp Monkey	Cercopitheque de Allen	Bongale (ekele, Bontoko)							LR/nt	
Primates	<i>Cercocebus chrysogaster</i>	Golden-bellied mangabey	Cercobebe à ventre doré	Linku, Inku	Nge						?	
Primates	<i>Cercopithecus ascanius</i>	Red-tailed guenon	Ascagne	Mbeka	Nsoli, Nsodi	Nkema			check local name		LR/lc	
Primates	<i>Cercopithecus neglectus</i>	De Brazza's monkey	Cercopithèque de Brazza	Mpounga, Bosila	Mpunga (lulu)	Mfunga					LR/lc	
Primates	<i>Cercopithecus wolffi</i>	Wolf's guenon	Mone de Meyer (????)	Nsoli	Nge	Nge					LR/lc	
Primates	<i>Lophocebus aterrimus</i>	Black mangabey	Mangabé noir	Ngila							LR/nt	

Order	Scientific	English	French	Vernacular Lingala	Vernacular Nkundo	Vernacular: Ndengese	Hart et al	Inogwabini	Maisels et al	CITES 2007	IUCN 2006a	IUCN 2006b
Primates	<i>Colobus angolensis</i>	Angolan pied Colobus	Colobe d'Angola	Libuka	Buka	Vuka					LR/lc	
Primates	<i>Prolobus (Ptilocolobus) badius tholloni</i>	Tshuapa Red colobus	Colobe bai	Djofe, Kolongo	Nkolongo	Nkolongo					?	
Primates	<i>Galagonides demidoff phasma</i>	Demidoff's galago	Galago de Deminoff	Lisile	Sila	Ngomba					LR/lc	
Primates	<i>Perodicticus potto faustus</i>	Potto	Potto de Bossman	Nkatu, Nkatshu	Nkatu	Nkatu					LR/lc	
Primates	<i>Pan paniscus</i>	Bonobo	Chimpanzé nain	Edja (bi), Esumbu, Mokomboso	Elia	Efuku (tofuku)				I	EN	A2cd
Proboscoidea	<i>Loxodonta africana cyclotis</i>	Forest elephant	Eléphant de forêt	Ndjoku							VU	A2a
Rodentia	<i>Anomalurus derbianus</i>	Ecureuil volant de Derby	Lord Derby's anomalure	Lokio	Lokeyo	Bokfuyo (Pronunciation : Bokuyo)					LC	
Rodentia	<i>Cricetomys emini</i>	Emin's Giant Rat	Rat de Gambie	Bontomba							LC	
Rodentia	<i>Funisciurus anerythrus</i>	Thomas's rope squirrel	Finisciure a dos raye	Ekotshi		Ekotshi					DD	
Rodentia	<i>Atherurus africanus</i>	Brush-tailed porcupine	Athérure	Ikoo, Iko							LC	
Rodentia	<i>Lemniscomys striatus</i>	Zebra mouse		Inkengi							LC	
Rodentia	<i>Heliosciurus rufobrachium</i>	Red-legged sun squirrel	Heliosciure a pattes rousses			Epae (Pronunciation : a pie)					LC	
Rodentia	<i>Protoxerus stangeri</i>	Giant forest squirrel	Ecureuil géant		Nsende	Esendje					LC	