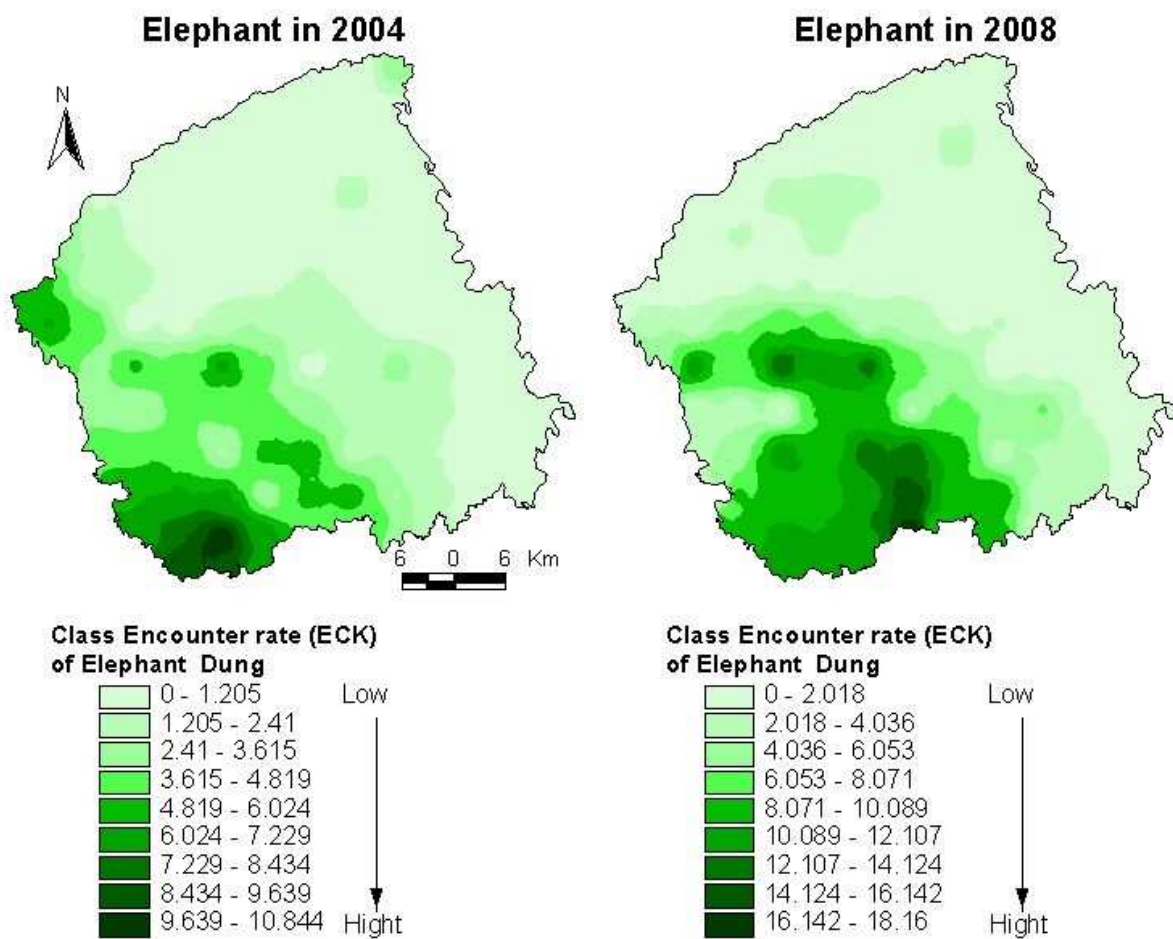
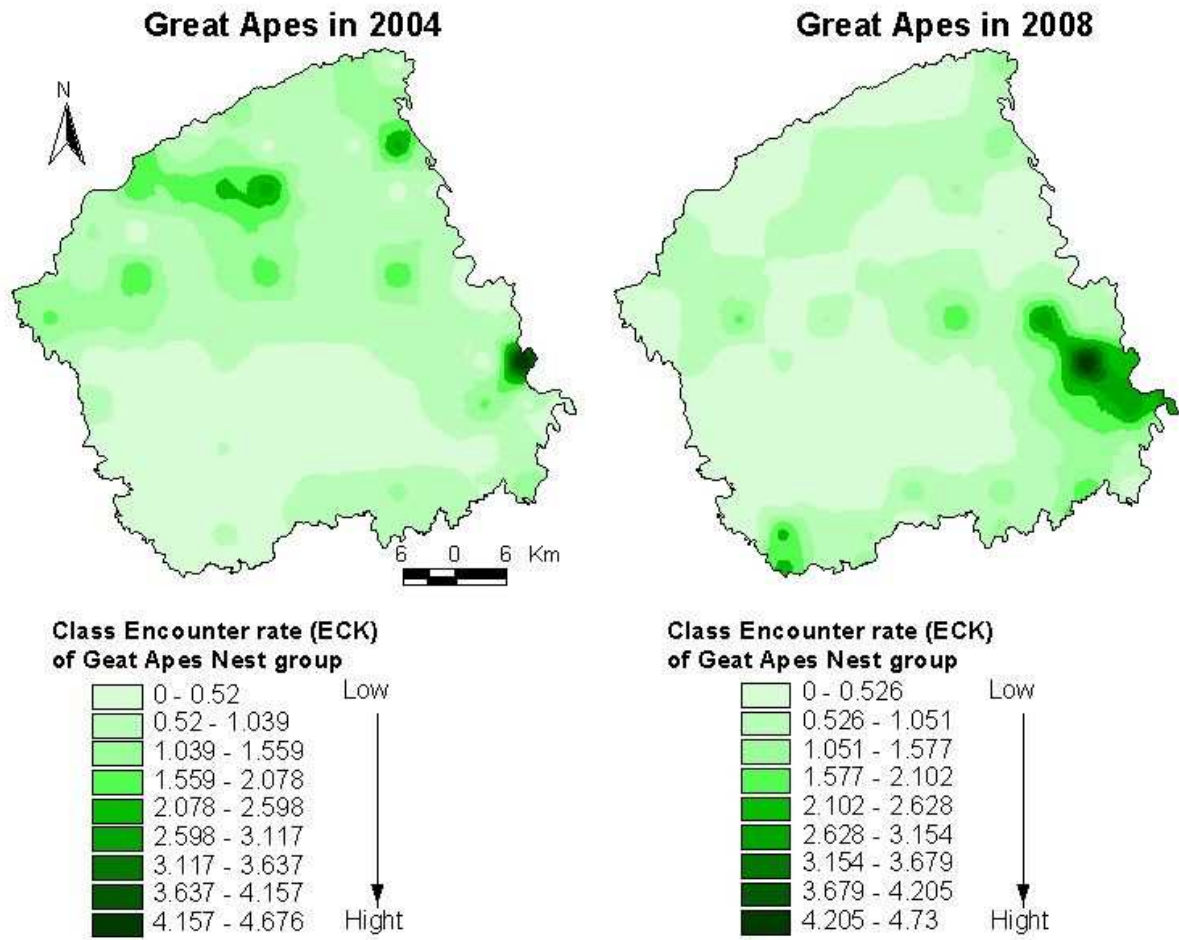


COMPARATIVE EVALUATION OF THE EVOLUTION OF FLASHIPS SPECIES POPULATION AND HUMAN ACTIVITIES IN BOUMBA BEK NATIONAL PARK FROM 2004 TO 2006

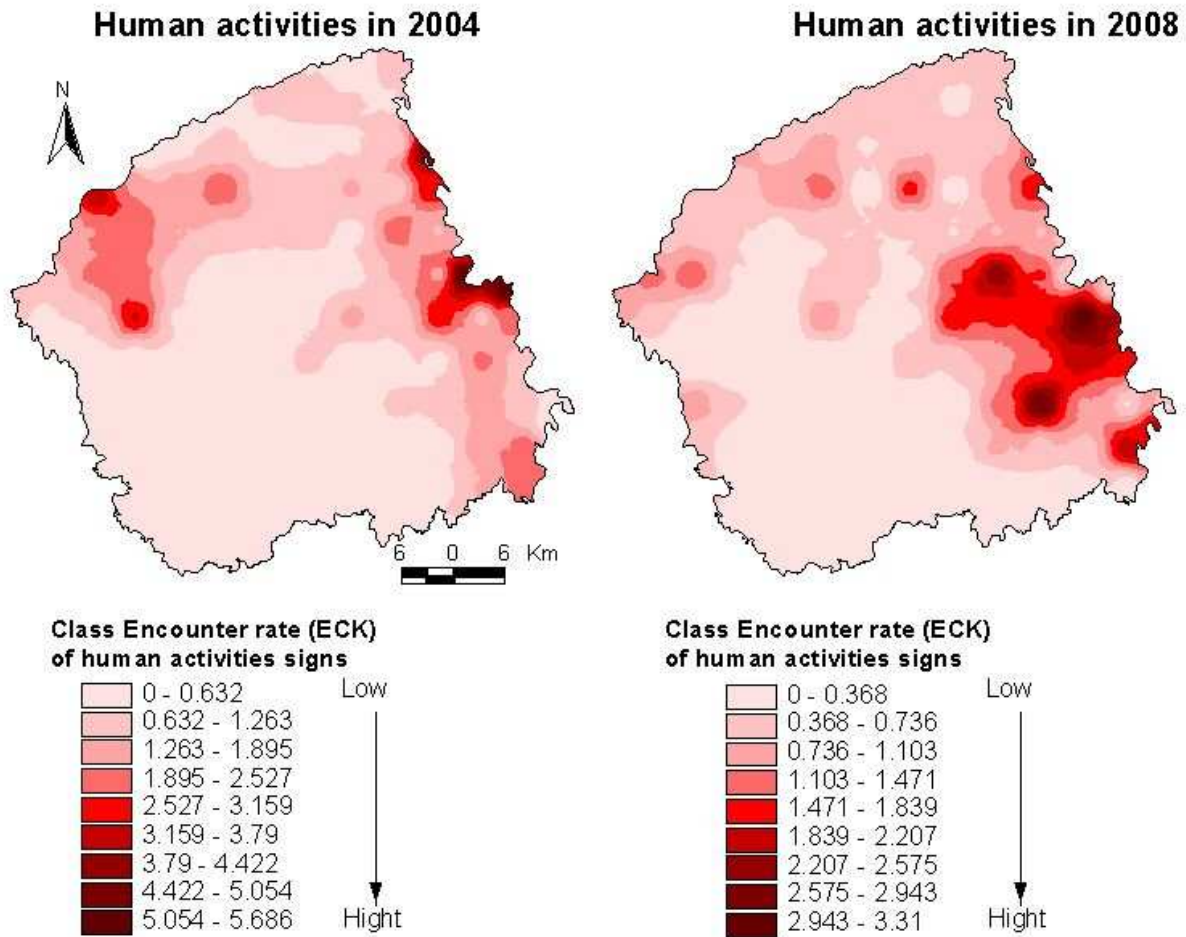
1- ELEPHANT



2- GREAT APES (*Gorilla an Chimpanze*)



3- HUMAN ACTIVITIES (Fishing, Gathering of NTFP, Hunting)



4- EVOLUTION IN AVERAGE OF INDICATORS

	2004	2008
Elephant dung pile encounter rate	2.00 ± 0.25	5.588 ± 0.21
Ape nest group encounter rate	0.32 ± 0.06	0.491 ± 0.004
Human sign encounter rate	0.82 ± 0.13	0.709 ± 0.004

It's appearing that between 2004-200, elephant has been massively immigrating into Boumba-Bek national park. This is because of logging exploitation of forest concession in the southern peripheral zone of the Park, and intensive poaching pressure in the same sector.

***Il apparaît une immigration des éléphants dans le Parc National de
Boumba-Bek entre 2004 et 2008, d'ou le taux de rencontre des crottes
assez élevée***