

## **Annex 5**

### **Database and GIS with existing and new biological data**

#### **TAYNA NR**

**→ Data collection report of existing and new biological data**

## Data base and GIS with existing and new biological data

### TAYNA NR, FY 07

The field staff of the Tayna NR gathers research and monitoring data since 2001.

The number of GPS waypoints gathered for the Tayna NR data base increased from 2834 to 4946 from 2006 to 2007.

The increase of 2112 GPS points that were processed and included into the GIS data base is significant. The details are shown in the following table in comparison with Maiko National Park, Kisimba-Ikobo NR and the UGADEC CBNRM:

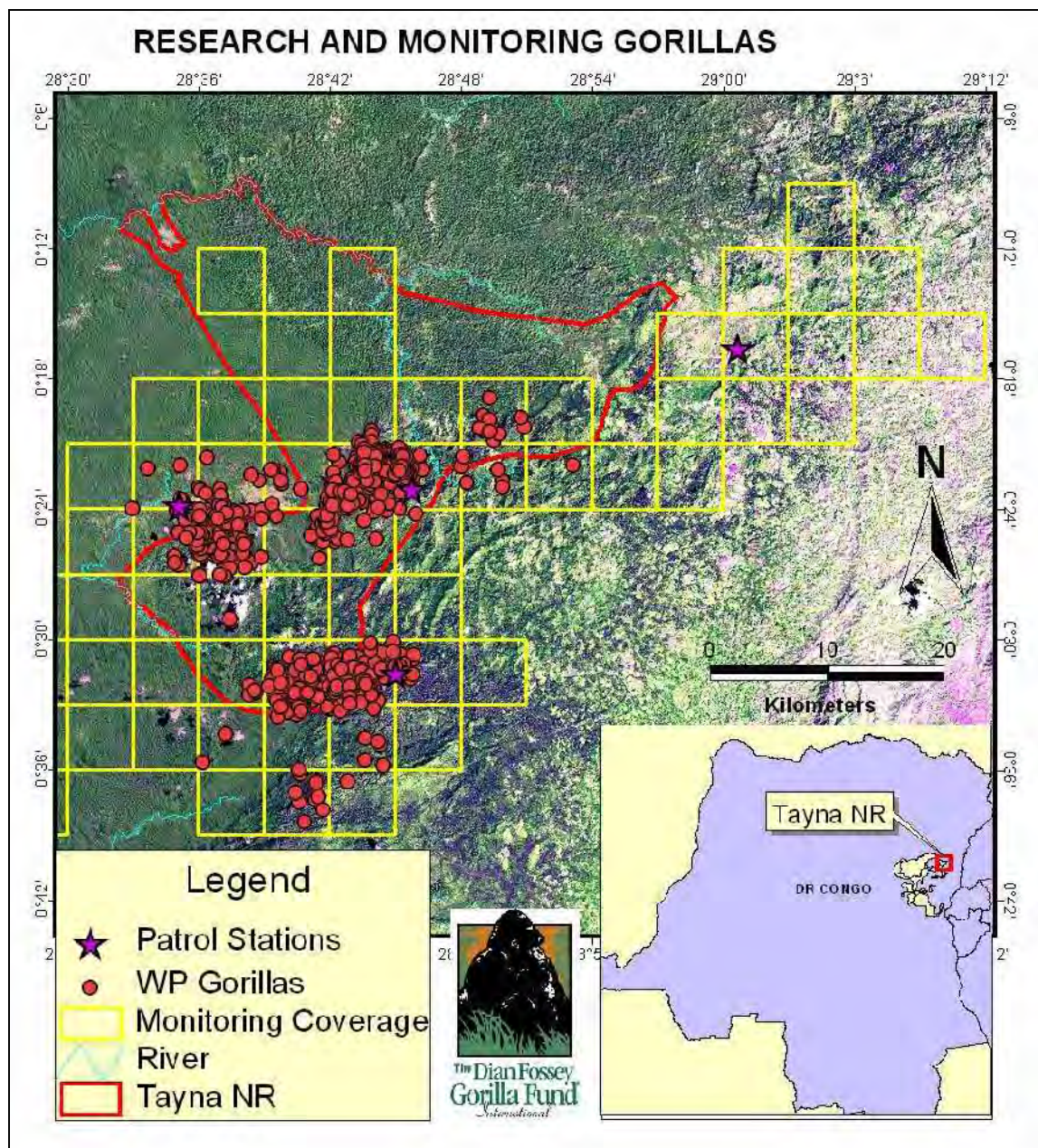
NP / NR / CBNRM	Nat'l Park	Nature Reserves		UGADEC CBNRM						TOTAL GPS POINTS
AREA	Maiko NP	Tayna NR	Kisimba-Ikobo NR	COCREFOBA	ILSN	RECOPRIFOL	REGOUWA	RGPU	RGU	
THEME										
Traces Gorillas	18	1004	203	273	11	42	131	114	129	1925
Traces Chimpanzees	4	1432	224	282	189	141	42	56	8	2378
Traces other animals	60	1058	81	644	16	97	305	138	4	2403
Threats	29	1275	143	432	60	291	281	104	199	2814
Villages	7	40	41	29	22	4	93	38	9	283
Topographic features	3	133	62	27	3	36	67	14	5	350
Infrastructure	2	4	4	2	0	6	0	0	5	23
GPS POINTS TOTAL Sep 2007	123	4946	758	1689	301	617	919	464	359	10176
GPS POINTS TOTAL Sep 2006	103	2834	506	1250	158	334	557	97	40	5879
GPS POINTS INCREASE 2006-2007	20	2112	252	439	143	283	362	367	319	4297

The following maps show the quadrats that were covered over the past years and the waypoints gathered on gorillas, chimpanzees and threats (Figure 1-3). Figure 4 and 5 show more detailed gorilla data on two gorilla groups that are part of the prehabilitation program and gorilla data per month for the central part of the Tayna NR.

The last two maps (Figure 6 & 7) show an overview of gorilla and chimpanzee presence/absence for Landscape 10.

Not yet all of the data of the past months within 2007 is processed and visualized.

**Figure 1: Gorilla distribution in the Tayna NR**





**Figure 2: Chimpanzee distribution in the Tayna NR**

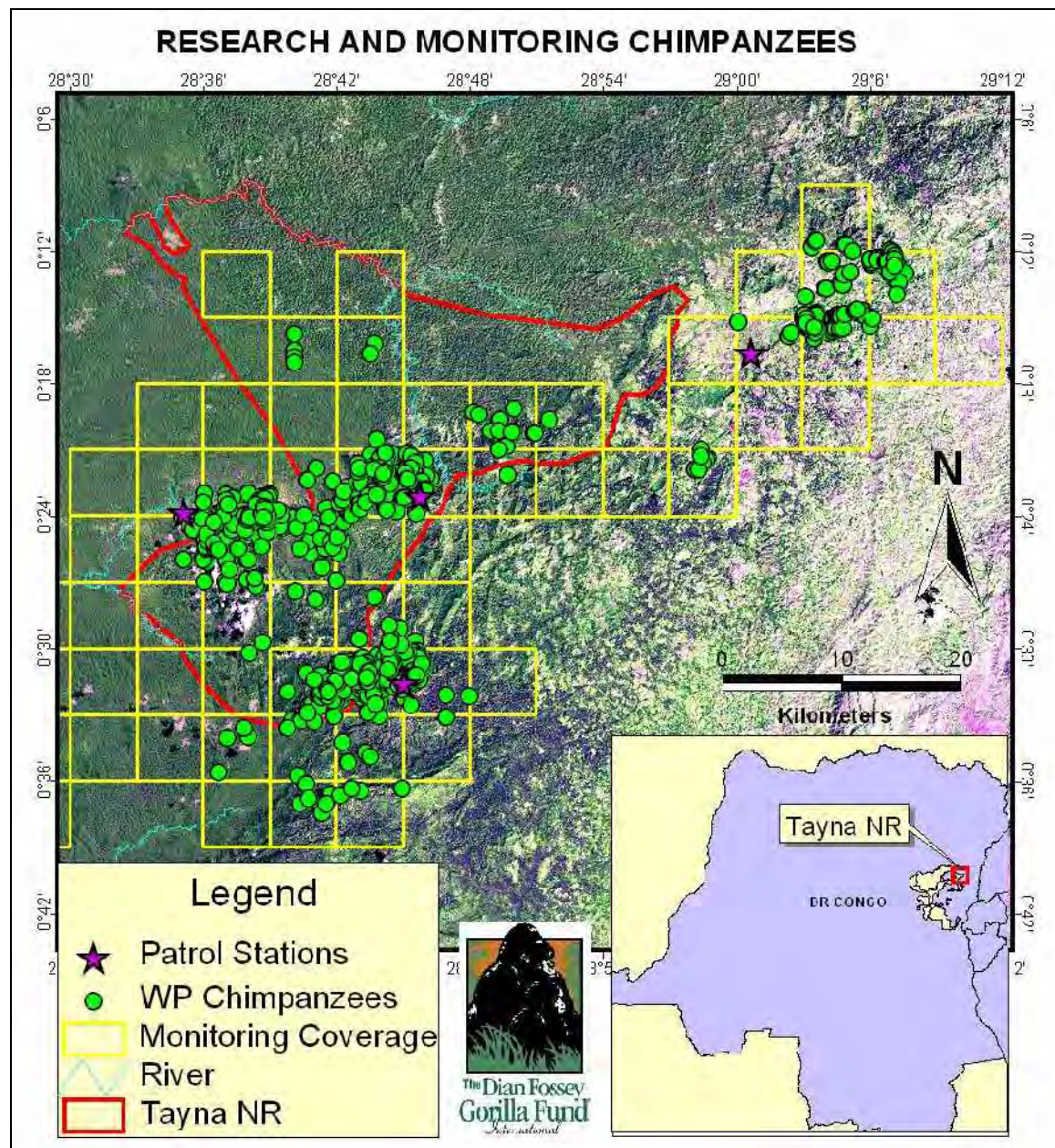
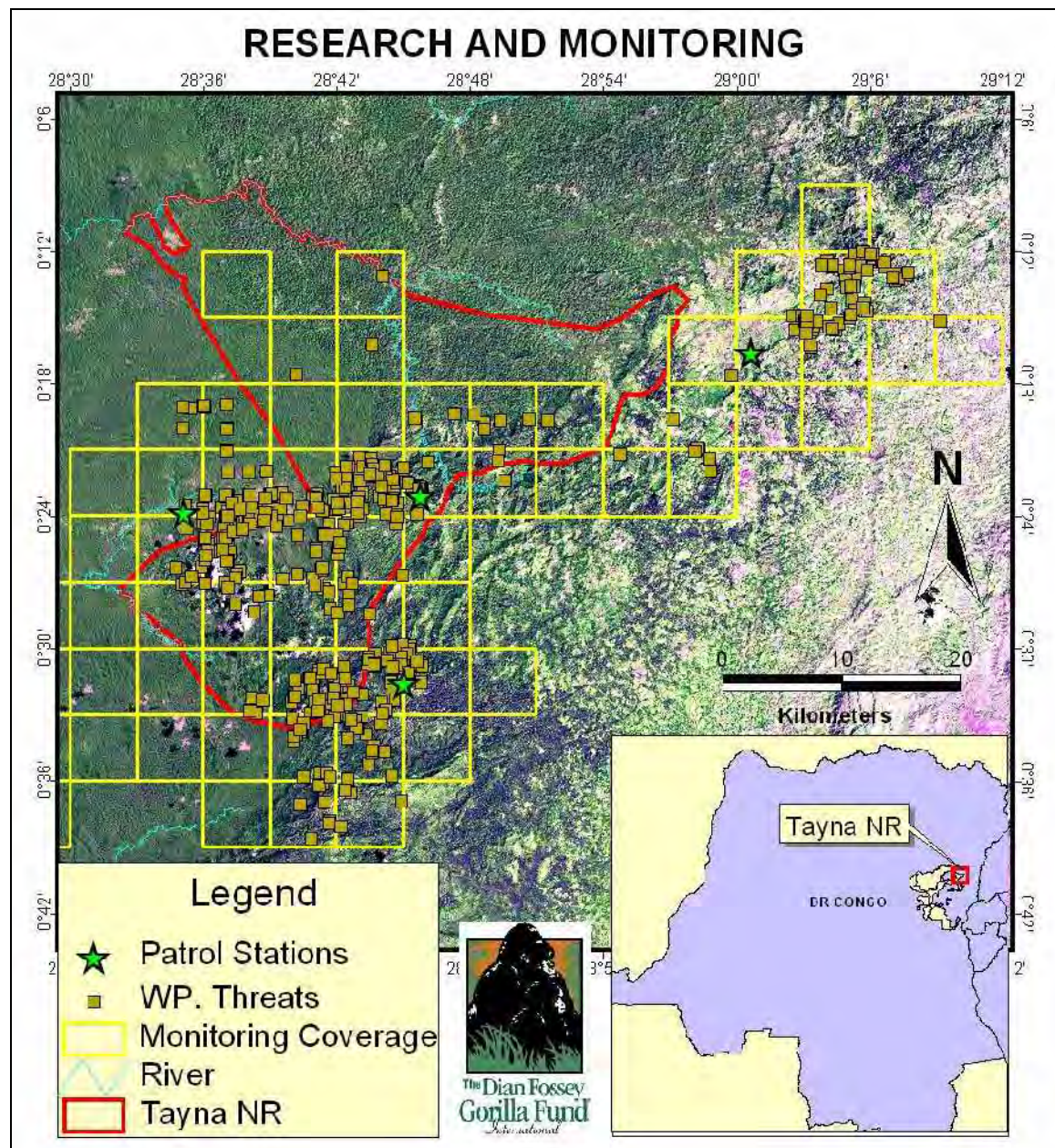


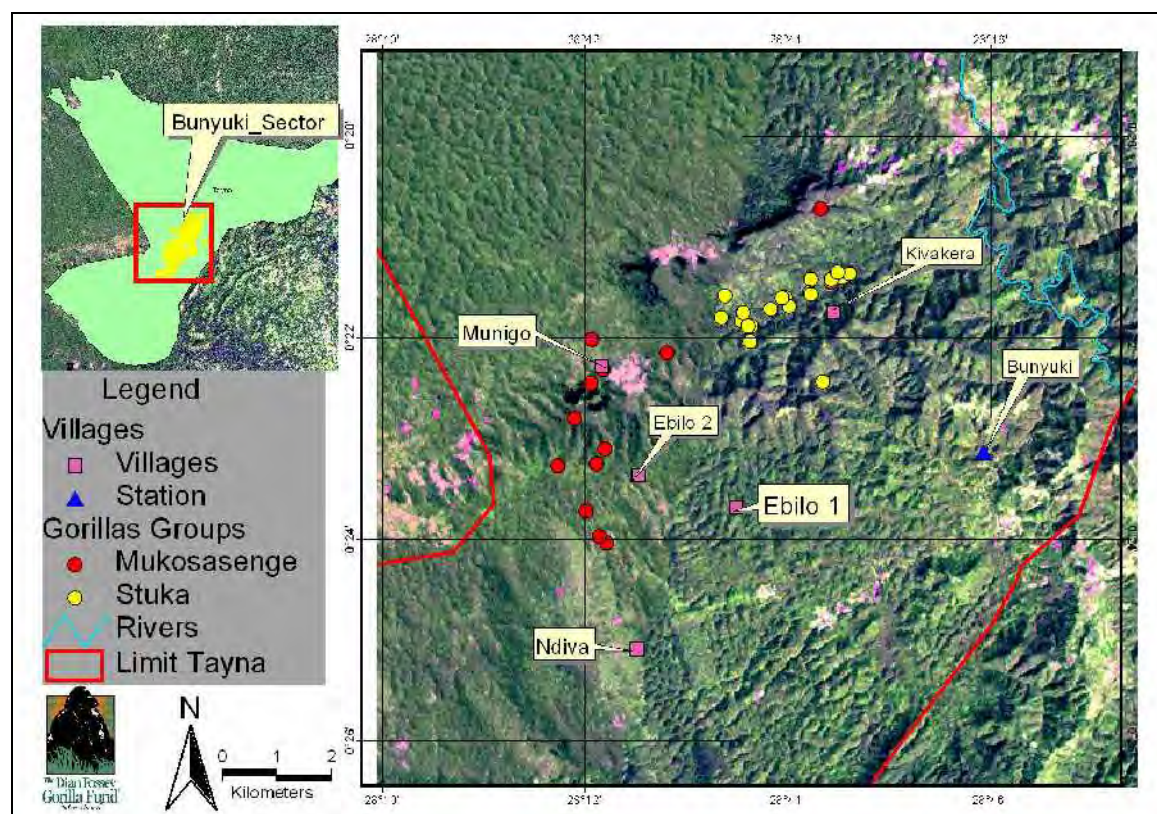


Figure 3: Threats in the Tayna NR

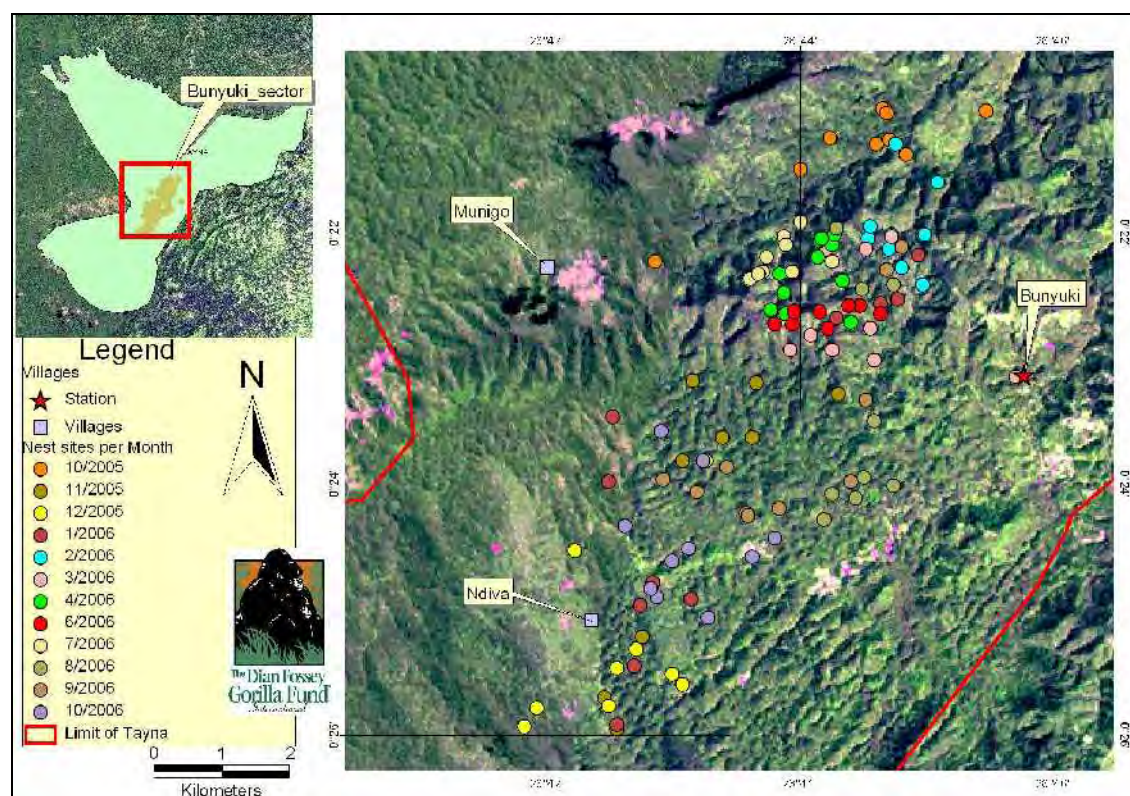




**Figure 4: Monitoring data of two gorilla groups: pre-habituuation program**

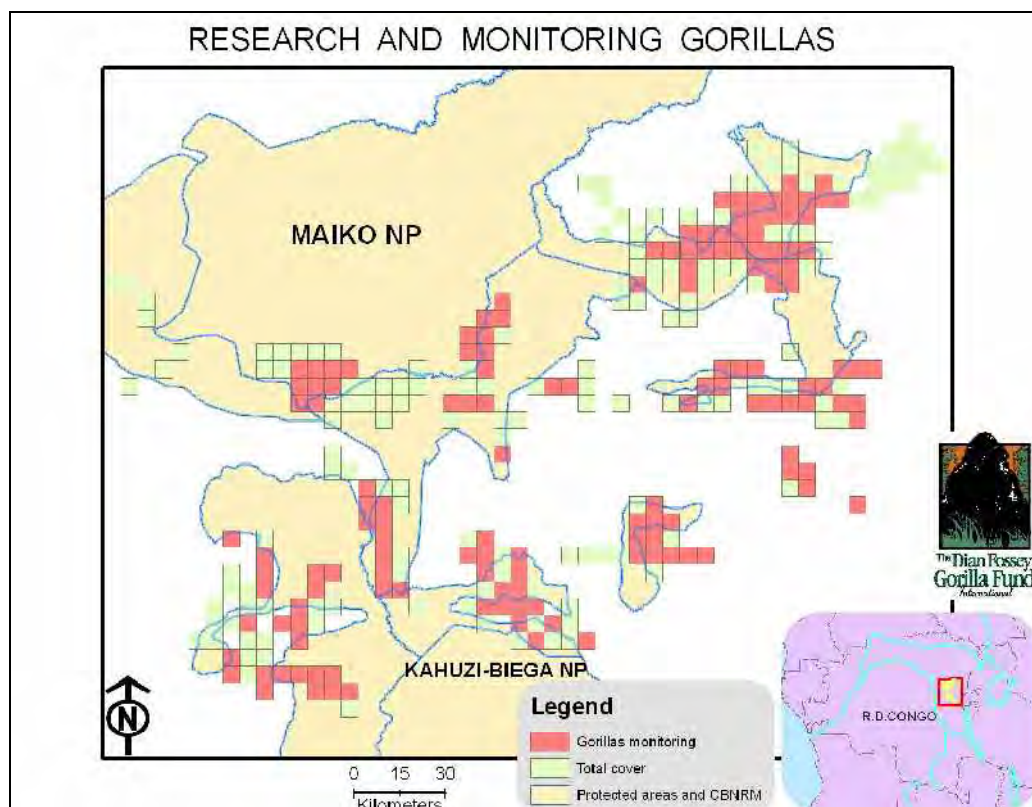


**Figure 5: Gorilla monitoring data per month**





**Figure 6: Gorilla monitoring data (presence / absence) Landscape 10**



**Figure 7: Chimpanzee monitoring data (presence / absence) Landscape 10**

