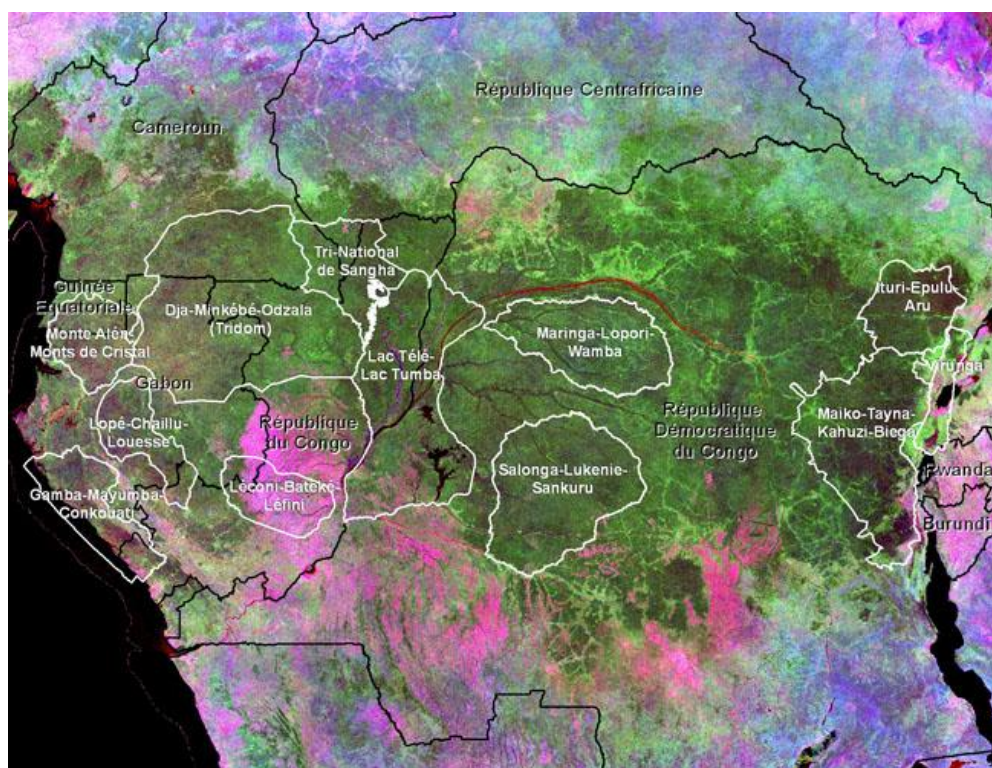


2010 Annual Report

USAID/CARPE Activities in the COMIFAC/PFBC Landscapes in Support of the COMIFAC Convergence Plan

(October 2009 – September 2010)



Jason Ko
US Forest Service
International Programs



July 2011



Sommaire

1.0 Introduction	1
1.1 COMIFAC	1
1.2 USAID/CARPE	1
2.0 Summary of Cross-cutting Governance Activities.....	2
2.1 USAID/CARPE Small Grants Program (IUCN)	2
2.2 Satellite Detection and Forest Cover Mapping	3
2.3 Forest Concession Monitoring (WRI)	3
2.4 State of the Forest Report	4
2.5 USAID/CARPE Lessons Learned Report (v2).....	4
3.0 Selected Activities in the COMIFAC/CBFP Landscapes	5
3.1 COMIFAC/CBFP Landscape #1: Mont Cristal-Mont Alen	5
3.2 COMIFAC/CBFP Landscape #2: Gamba-Conkouati	6
3.3 COMIFAC/CBFP Landscape #3: Lopé-Chaillu-Louesse	7
3.4 COMIFAC/CBFP Landscape #4: Dja-Minkebe-Odzala (TRIDOM).....	8
3.5 COMIFAC/CBFP Landscape #5 : Tri-national de la Sangha (TNS).....	9
3.6 COMIFAC/CBFP Landscape #6 : Léconi-Batéké-Léfini.....	10
3.7 COMIFAC/CBFP Landscape #7 : Lac Télé-Lac Tumba	10
3.8 COMIFAC/CBFP Landscape #8 : Salonga-Lukenie-Sankuru.....	11
3.9 COMIFAC/CBFP Landscape #9 : Maringa-Lopori-Wamba.....	12
3.10 COMIFAC/CBFP Landscape #10 : Maiko-Tayna-Kahuzi Biega	13
3.11 COMIFAC/CBFP Landscape #11 : Ituri (Okapi)	14
3.12 COMIFAC/CBFP Landscape #12 : Virunga	15
Annexe 1 : Sommaire des Activités de Formation	18
Annexe 2 : Budget CARPE Analysé Selon les Catégories d'Activités COMIFAC.....	16

1.0 Introduction

The goal of this report is to summarize, in the context of the COMIFAC Convergence Plan, the major activities executed by the USAID Central Africa Regional Program for the Environment (CARPE) and its implementing partners, during the period of October 2009 – September 2010. It is hoped that this document will create stronger communication between COMIFAC and CARPE to capitalize on synergies and provide a platform for closer future collaboration and cooperation.

1.1 COMIFAC

COMIFAC is the principal political and technical forum for guidance, coordination, harmonization and decision-making in the conservation and sustainable management of forest and savannah ecosystems in Central Africa. Created in 1999 by the Yaoundé Declaration, COMIFAC is composed of the Forestry Ministers of its 10 member countries and has an executive secretariat (ES) based in Yaoundé, Cameroon. COMIFAC is recognized as primary coordinator for partner activities of the Congo Basin Forest Partnership (CBFP), a type II voluntary partnership whose primary aim is to enhance natural resource management and improve the standard of living in the Congo Basin. The COMIFAC Convergence Plan, last revised in 2005, has the vision of sustainable and joint management by Central African States of their forest resources for the wellbeing of their people, the preservation of biodiversity and the protection of the global environment. The Convergence Plan thus defines regional intervention strategies for governments and development partners concerning the conservation and sustainable management of forest and savannah ecosystems in the region.

For more information on COMIFAC visit: <http://www.comifac.org/>

1.2 USAID/CARPE

The U.S. Agency for International Development (USAID) Central Africa Regional Program for the Environment (CARPE) is the primary means of contribution by the U. S. Government to the CBFP and thus the execution of the COMIFAC Convergence Plan. The strategic objective of CARPE is to reduce the rate of forest degradation and loss of biodiversity in the Congo Basin by increasing local, national, and regional natural resource management capacity. Intermediate results to be achieved in order to reach this objective involve implementing sustainable forest and biodiversity management practices, strengthening environmental governance, and working to monitor forests and other natural resources throughout the region.

Established in 1995 and operating since 1997, USAID/CARPE has contributed over \$110 million¹ towards the sustainable management of natural resources in the Congo Basin and is currently transitioning from the 2nd to 3rd phase of implementation. USAID/CARPE activities are focused primarily in the 12 COMIFAC/CBFP landscapes, however CARPE also has significant cross-cutting governance and monitoring programs, which support individual countries and includes support to the COMIFAC ES through the US Forest Service.

¹ See Annex 1

The following sections summarize first the cross-cutting activities supported by USAID/CARPE in the region, and then the activities in the 12 COMIFAC/CBFP landscapes. All these activities are related to the COMIFAC Convergence Plan.

For more information on USAID/CARPE visit: <http://carpe.umd.edu/>

2.0 Summary of Cross-cutting Governance and Monitoring Activities

2.1 USAID/CARPE Country Teams and Small Grants Program (IUCN)

IUCN manages the USAID/CARPE country teams, chaired by a CARPE focal point in each country. These country teams hold regular meetings to coordinate USAID/CARPE activities with and between government and NGO partners and discuss and shape an environment policy reform agenda at the country level for good governance. The focal points also act to coordinate and monitor between various USAID/CARPE activities in country, as many countries have several landscape programs operated by different organizations. The CARPE country focal points also chair the small grants program in each country as described below.

The USAID/CARPE small grants program is administered by IUCN in nine of the 10 COMIFAC countries² to reinforce the capacities of civil society for biodiversity conservation and sustainable forest conservation. The grant award decision process at the national level involves government representatives, COMIFAC, NGOs, research organizations, and a broad variety of other stakeholders.

Some highlights of the 2010 small grants that CARPE supported in the region are:

1. Example 1: Cameroon – The NGO Network for Environment and Sustainable Development in Central Africa (NESDA-CA) was given a small grant support the Cameroonian Parliamentarian Network (REPAR) to analyze the implications of REDD + and bring the members of REPAR-Cameroon to master and analyze the legislative and institutional context to formulate a national REDD + strategy for Cameroon.
2. Example 2: CAR – The organization REFADD/CAR (Network of African Women for the Sustainable Development in CAR) was given a small grant to support the distribution and implementation of the laws and texts relative to sustainable forest and environmental resource management in CAR in general, and more particularly educate, train, and inform the relevant local / elected authorities, indigenous peoples, and civil society.
3. Example 3: DRC – The NGO GRADIC (*Groupe de Recherches et d'actions pour un développement intégré des communautés de base*) was given a small grant to build capacity in beekeeping in 18 villages of the Bundi sector of the Seke Banza.

Lists of the individual small grants by year can be found at:

http://www.iucn.org/fr/propos/union/secretariat/bureaux/paco/programmes/paco_forest/carpe_paco/smg_carpe_paco/carpe_small_grants_list_g/

² There is no USAID/CARPE small grants program in Chad.

2.2 Satellite Detection and Forest Cover Mapping

USAID/CARPE is the primary supporter of the Central African Forest Satellite Observatory (OSFAC)³ was founded in 2000 and acts as the Central Africa regional GOFC-GOLD (Global Observation of Forest and Land Cover Dynamics) network. OSFAC works to improve the quality and availability of satellite observations of forest and land cover in the Congo Basin and to produce useful and timely information products for a wide variety of users. OSFAC is one of the primary, active training institutions in the region for remote sensing and GIS.

The USAID/CARPE Decadal Forest Change Mapping (DFCM) Project focuses on creating wall to wall forest cover maps to provide a baseline for future monitoring of forest resources. OSFAC, the University of Maryland (UMD), South Dakota State University (SDSU), and NASA/Goddard Space Flight Center are cooperating to complete this mapping effort using high resolution Landsat Thematic Mapper datasets from circa 1990 to circa 2000 for the 12 COMIFAC/CBFP landscapes.

Results of this project to date include:

1. Images forest cover across the basin (derived from MODIS data data, from 2000 to 2004)
2. The composite images of Landsat
 - a. Period 1: Landsat composite image around 1990
 - b. Period 2: Landsat composite image circa 2000
 - c. The images combined (periods 1 & 2) cloudless
3. Forest cover and change map of forest cover from 1990 to 2000
4. Auxiliary Data
5. Metadata

Maps, images, and other products are available on online at: <http://carpe.umd.edu/resources/dfcm>

2.3 Forest Concession Monitoring (WRI)

USAID/CARPE supports World Resources Institute (WRI) in their activities to reinforce the capacities of Congo Basin institutions to collect and analyze data in the forest sector. WRI collaborates with forest ministry teams in five countries in the region (Cameroon, CAR, Congo, DRC, and Gabon)⁴ to produce and maintain geo-spatial databases, interactive forestry atlases, and forestry situation posters. These atlases contain not only forestry concessions, but also parks and protected areas, roads, towns, and in some cases mining permits and concession limits. In the period October 2009- Juin 2010, WRI and a team of *la Centre des Données Forestières (CDF) de la Ministère des Eaux, Forêts, Chasse et Pêche* completed the first version of the interactive atlas in CAR. In addition, with *la Direction Inventaire et Aménagement forestiers (DIAF)*, WRI distributed the forestry situation poster for DRC. Furthermore, the third version of the interactive atlas is being finalized in Cameroon, the second in Congo, and the first version for DRC, which is expected in 2011. Also of note is that the atlas helped the Congolese government to obtain its FLEGT Voluntary Partnership Agreement (VPA).

³ OSFAC should not be confused with OFAC, which is a sub-organization of COMIFAC related to data collection for the State of the Forest Reports

⁴ WRI is in the process of finalizing an agreement with the government of Equatorial Guinea.

The posters and atlases can be found at:

http://carpe.umd.edu/Plone/resources/good_governance_forestry

2.4 State of the Forest Report

USAID/CARPE is among the primary supporters of the Central African Forest Observatory (OFAC), the COMIFAC organization which facilitates the elaboration of the State of the Forest Report. The State of the Forest Report examines in detail the state of the dense humid forests of the Congo Basin to 1) reinforce knowledge; 2) contribute to a common understanding of the challenges faced; 3) orient intervention strategies; and 4) monitor the forests in their economic, ecological, and social dimensions. A preliminary version was published in 2005, followed by full editions in 2006 and 2008. The 2010 edition should be finished before the end of 2011. CARPE and its implementing partners are also primary and secondary authors for many chapters of the document

The State of the Forest Reports can be found at: <http://carpe.umd.edu/resources/sof/>

2.5 USAID/CARPE Lessons Learned Report (v2)

USAID/CARPE worked with IUCN to publish the second edition of the “CARPE Lessons Learned” report. This publication contains 27 case studies of applied conservation as well as seven overview articles synthesizing the results of the groups of case studies, which cover different thematic areas. The publication’s case studies are organized into three sections: land-use planning, environmental policy and governance, and monitoring of natural resources, which parallel the structure of CARPE’s three core components. The case studies therefore present a comprehensive review of the program’s activities. The emphasis on case studies and overview articles is intended to provide direct insights from the actual experiences of CARPE’s partner institutions. This publication is therefore an authentic and practical guide to implementing conservation programs in the Congo Basin. The emphasis on lessons learned is aimed at synthesizing for the reader the key pieces of advice the authors can provide to others concerning the best ways of implementing conservation projects in the region. As such, this publication presents the majority of significant accumulated knowledge of CARPE partner institutions acquired during the implementation of the program.

The complete Lessons Learned Reports (1st and 2nd) can be found at:

<http://129.2.12.16/carpedocs/index.php>

3.0 Selected Activities in the COMIFAC/CBFP Landscapes

The majority of USAID/CARPE financing is allocated to support activities in the COMIFAC/CBFP landscapes. Eight of the 12 landscapes are trans-boundary in nature and recognized through international agreements that encourage cooperation for environmental monitoring, management, and application of laws. The sustainable management of these 12 landscapes forms the pillar of the USAID/CARPE regional conservation strategy. The lead USAID/CARPE partners on the ground in these landscapes are African Wildlife Fund (AWF), Conservation International (CI), Wildlife Conservation Society (WCS), and World Wildlife Fund (WWF).

The COMIFAC/CBFP Landscapes were identified as priority areas for conservation in the region during a 2000 Libreville workshop organized by WWF which brought together 160 biologists and socio-economic experts. Based on principles of integrated conservation, large-scale land management, and using existing and/or formally referred to land use zones in the region's legal and regulatory frameworks, each landscape is divided into different management zones including: protected areas, Community Based Natural Resource Management (CBNRM) zones, and extractive zones. In these zones, USAID/CARPE and its partners work with local authorities and communities to apply sustainable land management practices.

The following chapters highlight some of the significant activities realized (for the period October 2009-September 2010) in each of the COMIFAC/CBFP landscapes and organize them in the context of the 10 defined strategic areas of COMIFAC Convergence Plan plus REDD.

3.1 COMIFAC/CBFP Landscape #1: Mont Cristal-Mont Alen

Area 1- Harmonization of forest and taxation policies

- The Mont Cristal-Mont Alen Integrated Land-use planning (LUP) Team of met to update the Landscape management plan at Libreville.

Area 2- Knowledge of the Resource

- Support to the *Ministerio de Pesca y Medio Ambiente* (MdePyMA) in the submission of a proposal to UNDP-GEF to establish a baseline scenario for forest carbon monitoring.
- Support to wildlife surveys and inventories of key species in the National Parks.

Area 3- Management of Ecosystems and Reforestation

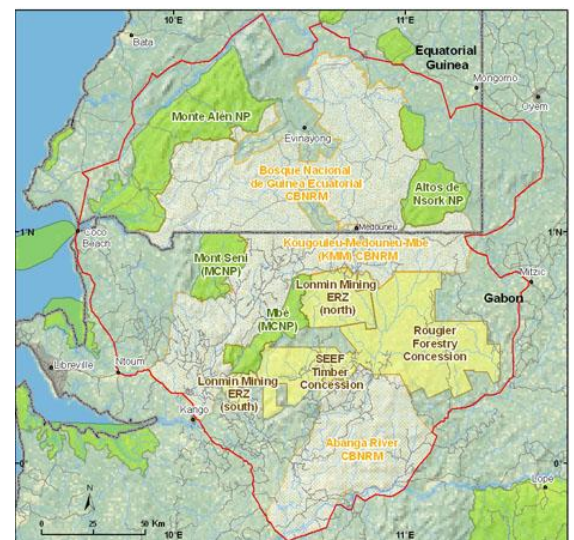
- *Altos de Nsork* NP management plan presented by LUP team to GoEG for approval and adoption
- Three LUP stakeholder meetings in *Mbe du Kougouleu-Medouneu* (KMM) in Gabon to adopt and validate micro-zoning map.
- The LUP team of the Lonmin extractive zone was reorganized with the departure of Lonmin and the macro-zones re-examined

Area 4- Biodiversity Conservation

- Wildlife patrol missions with local and park authorities supported in: Rougier forestry concession, Mont Cristal NP, KMM Basin, and to monitor manatees hunting in the *Abanga bas* zone

Area 5- Sustainable Valorisation of Forest Resources

- Support to the Rougier forestry concession to obtain FSC certification



- Area 6- Development of alternative activities and poverty alleviation**
- Execution and evaluation of five alternative livelihood projects (pork, goat, and horticulture) in four villages in Mont Alen NP and neighboring CBNRM zone in Equatorial Guinea
- Area 7- Capacity building, stakeholder participation, information, training**
- Support to l'Universidad Nacional de Guinea Ecuatorial to graduate 15 students with a *Licenciatura* in Environmental Studies
 - Support to a local NGO in the KMM basin to obtain their official recognition
- Area 10- Regional Cooperation and Partnerships**
- Manatee conservation MOU signed by Minister of Water and Forest, Governor, District authorities, elected officials and 15 community representatives in Abanga River CBNRM zone
 - Support to Deogracias Ikaka Nzamio (MdePyMA), David Edjang of the *Ministerio de Agricultura y Bosques* (MdeAyB), and Diosdado Osa (MdeAyB) to attend the UNFCCC CoP15 en Copenhagen.
 - Support to M Edjang and M Osa to attend the COMIFAC post-CoP15 meeting at Brazzaville
 - Support to Antonio Micha and Santiago Biyang of MdePyMA to attend two COMIFAC workshops on management and financing of protected areas at Yaoundé and Douala
- Area 11- REDD**
- Three day, 49 person REDD readiness training held in EG on climate change and capacity-building for REDD+, and a subsequent smaller meeting which led to the establishment of a national REDD+ strategy working group with 12 members representing different government agencies, ANDEGE, and the national university (UNGE)

3.2 COMIFAC/CBFP Landscape #2: Gamba-Conkouati

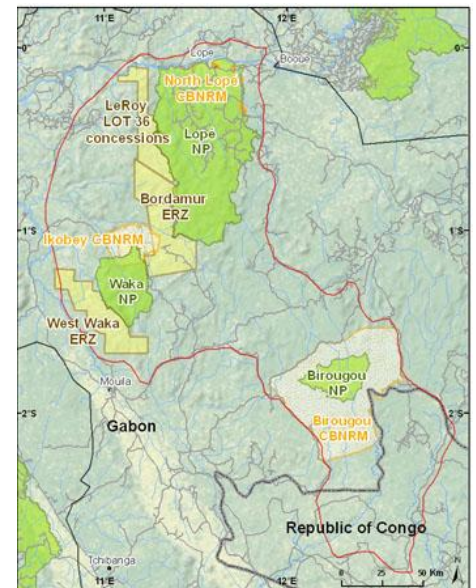
- Area 1- Harmonization of forest and taxation policies**
- Support to local villages of *Lagon Iguela* (Gabon) to lobby GoG against illegal fishing
- Area 2- Knowledge of the Resource**
- Annual training on sea turtle monitoring in Conkouati-Douli NP (PNCD) in Congo
 - Support to wildlife surveys and inventories of key species in the national parks
- Area 3- Management of Ecosystems and Reforestation**
- Working group established between authorities advancing land-use planning in the Gamba Complex (Moukalaba-Doudou NP (PNMD) and (PNL))
 - Creation and implementation of a fire management plan for PNL
 - Support to ANPN to hold a workshop to elaborate an annual workplan for PNL
 - An agreement between fishermen and PNL drafted, recognizing traditional fishing rights within the park limits
- Area 4- Biodiversity Conservation**
- Field equipment supplied to PNCD staff (tents, backpacks, uniforms, GPS, etc)
 - Mission organized for the GoG Forestry Ministry staff to meet local authorities to discuss the creation of a new protected area in the Gamba Complex (between PNMD and PNL)
 - Support to the elaboration of an agreement between PNCD and M&P (oil company) for the financing of seven eco-guards
- Area 5- Sustainable Valorisation of Forest Resources**
- 117 surveillance missions organized throughout the Gamba Complex totalling 5,055 person hours



- Area 6- Development of alternative activities and poverty alleviation**
 - Materials supplied to repair fishing nets in local communities in exchange for the freeing of captured sea turtles in PNCD
- Area 7- Capacity building, stakeholder participation, information, training**
 - Eco-guards of PNL and PNCD trained on data collection techniques for law enforcement monitoring, mission reporting and wildlife monitoring
 - 3-month training program in boat operation, navigation, safe sea exits and mission planning for DGP, ANPN, WCS and Gabonese Navy agencies in Mayumba and Loango National Parks
 - Support to environmental programs in 15 primary schools and 25 villages in the Conkouati-Douli community to gain support for PNCD
- Area 9- Development of Financing Mechanisms**
 - Support to PNCD authorities to create tourist brochures and postcards. Ecotourism revenues between FY08 and FY09 doubled, and doubled again between FY09 and FY10
 - Support to PNMD to create and distribute tourist posters (2000 copies printed)
- Area 10- Regional Cooperation and Partnerships**
 - A draft partnership established between Kyoto University, the local NGO “PROGRAM”, *l’Institut de Recherche en Ecologie Tropicale*, and ANPN for joint activities in the Doussala zone of PNMD

3.3 COMIFAC/CBFP Landscape #3: Lopé-Chaillu-Louesse

- Area 1- Harmonization of forest and taxation policies**
 - Two meetings convoked to define the vision of the landscape in the context of the World Heritage Site process
- Area 2- Knowledge of the Resource**
 - Evaluation mission of plant biodiversity in Birougou NP and buffer zones
 - Support to wildlife surveys and inventories of key species in Birougou, Lope, and Waka NPs.
- Area 3- Management of Ecosystems and Reforestation**
 - The realization, for the first time in Central African, of the participatory 3D mapping of a CBNRM (Ikobey)
 - Informal meetings convoked in each village around Waka NP concerning the creation of a park vision
 - Micro-zone proposal submitted to ANPN for Waka NP
 - Meeting held between extractive companies, local and park authorities to elaborate a management system for the Bordamur-Ikoy corridor (Gabon).
- Area 5- Sustainable Valorisation of Forest Resources**
 - Surveillance Patrols in the zone « Lot36 » to reduce poaching.
- Area 6- Development of alternative activities and poverty alleviation**
 - Guide produced on co-management benefit mechanisms for Lopé NP
- Area 7- Capacity building, stakeholder participation, information, training**
 - Continual training of eco-guards in Lope NP
 - Training of community representatives on participatory mapping in the North Lopé CBNRM zone
 - Support to the North Lopé CBNRM zone associations to manage the environmental education program
 - 19 Gabonese (Ministry of Waters and Forests, ANPN, WCS, and private forest sectors) and three colleagues from Cameroon trained on data collection and management
- Area 11- REDD**



- Training held and modules developed to educate local authorities and civil society in the landscape on the REDD process
- Feasibility study on the impacts of forest exploitation on carbon stocks in the Bordamur-Ikoy corridor

3.4 COMIFAC/CBFP Landscape #4: Dja-Minkebe-Odzala (TRIDOM)

Area 1- Harmonization of forest and taxation policies

- Four coordination meetings convoked between the authorities of Nki and Dja NPs
- Support to binational eco-guard patrols between Gabon and Congo to patrol Upper Ivindo Area
- Collaboration facilitated between Cameroonian and Gabonese Minkebe Park authorities concerning illegal migrations for poaching and mining

Area 2- Knowledge of the Resource

- Training in four villages on community forest inventories and monitoring in the Nki CBNRM zone
- Support to wildlife surveys and inventories of key species in Boumba Bek and Nki NPs

Area 3- Management of Ecosystems and Reforestation

- A threats and opportunities study regarding mining in the TRIDOM landscape
- A zoning plan was prepared for the Ivindo protected area (Gabon)
- Support to four local NGOs to organize validation meetings of policies and laws relating to access rights of populations around Boumba Bek and Nki NPs
- Final draft management plans for Boumba Bek and Nki NPs submitted to MINFOF (Cameroon)
- The management plan of Odzala-Kokoua NP (Congo) was officially validated
- A participatory management and land-use plan was approved for the Oua River CBNRM zone (Gabon)
- Hunting management MOU for Okano Valley was signed by the Minister of Water and Forests and the Executive Secretary of ANPN (Gabon)

Area 4- Biodiversity Conservation

- Support to eco-guards of the Odzala Kokoua protected area and buffer zones
- Laptops repaired for the staff of Bouba Bek and Nki NPs
- Support to the Congolese Ministry of Water and Forests to organize educational meetings on the creation of a protected area in the Ntokou-Pikounda CBNRM zone
- Support to eco-guard patrols in the FMU Rougier Ivindo extractive zone (Gabon)

Area 5- Sustainable Valorisation of Forest Resources

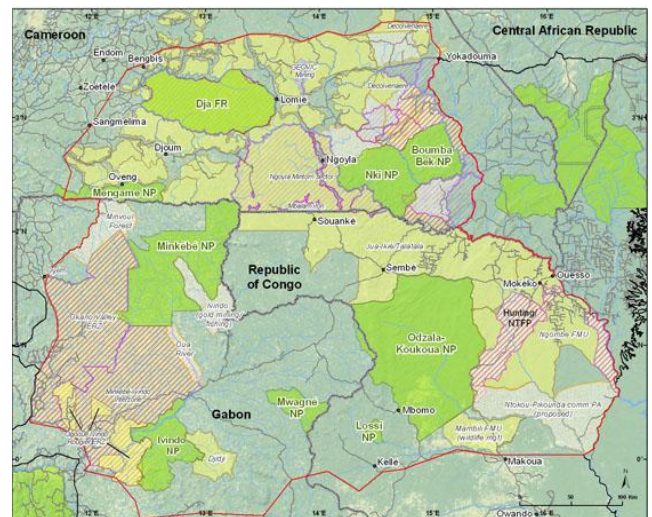
- Support to patrols on the Dja river have stopped the illegal cutting of wood and allowed elephants to cross the river again in the Jua-Ikié/Tala Tala extractive zone (Congo)
- To raise awareness on potential impact of infrastructure/mining development in the TRIDOM, USAID/CARPE through WWF has been promoting two film projects

Area 7- Capacity building, stakeholder participation, information, training

- Training of 41 new eco-guards on monitoring, surveillance, and forest laws in the Boumba Bek and Nki NPs
- 26 local NGO representatives trained in four workshops on the principles of community participation in natural resources management in and around Ouessou (Congo)

Area 10- Regional Cooperation and Partnerships

- Stakeholders signing ceremony organized for the management of the Oua River (Gabon)



- Finalized all signatures of a MOU regulating hunting in the Mwagna Djoua Zadie extractive zone (Gabon) ; the MOU is with the private sector directors before going to the Ministry

3.5 COMIFAC/CBFP Landscape #5 : Tri-national de la Sangha (TNS)

Area 1- Harmonization of forest and taxation policies

- The TNS Land Use Plan was finalized and adopted by the technicians of the three countries, under the framework of COMIFAC. This document has recently been approved by the Ministries of Forest and Wildlife of the three countries
- The three countries (Cameroun, Republic of Congo and CAR) submitted a joint application to UNESCO for the nomination of TNS as a World Heritage Site.
- Support to four bi-national patrols (Congo-CAR and Congo-Cameroun)
- Support to a tri-national patrol on the Sangha river

Area 2- Knowledge of the Resource

- A study of the conflicts between local populations and mammals in Nouabale-Ndoki NP (Congo) and extractive zones of Kabo FMU, Pokola FMU, and Loundoudou-Toukoulaka FMU
- Inventories of extractive resources in the Mimbo Mimbo community forest in the Lobeke extractive zone (Cameroun)

Area 3- Management of Ecosystems and Reforestation

- Validation workshop of the management plan of Dzanga-Ndoki NP with GoCAR
- Management plan for Mimbo Mimbo community forest was submitted to for national validation

Area 4- Biodiversity Conservation

- Surveillance roads rehabilitated and support to eco-guards in Lobeke NP

Area 5- Sustainable Valorisation of Forest Resources

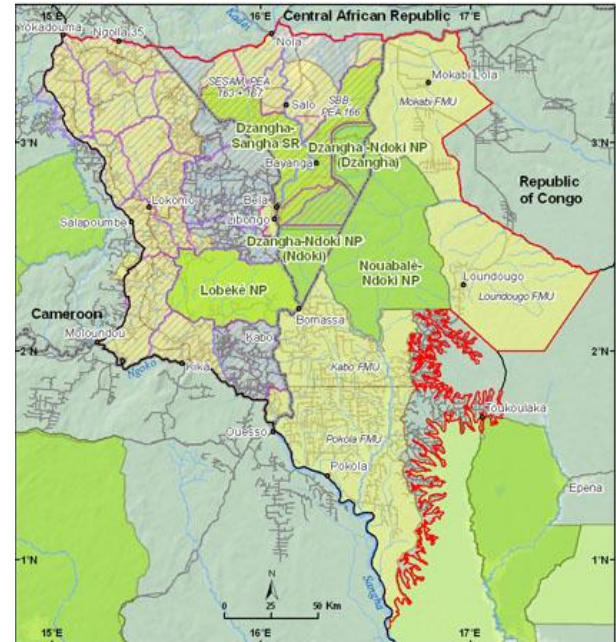
- A proposal was submitted for the recongnition of TNS as a World Heritage Site
- Support to anti-poaching patrols in Nouabale-Ndoki NP

Area 6- Development of alternative activities and poverty alleviation

- Meetings held in the villages of Bmassa and Makao to discuss community management of tourism revenues of Nouabale-Ndoki NP
- Tourist accommodations rehabilitated in Mondika et Mbeli around Nouabale-Ndoki NP
- Mambele-Yenga Baka communities generated \$4000 through the artisanal exploitation of timber in their logging concession. A portion of this revenue was used to cover the enrollment and basic school supplies for 144 Baka pupils in the community.
- A contract has been signed with Bushtracks for the management of the Doli Lodge (CAR)

Area 7- Capacity building, stakeholder participation, information, training

- Environmental Education programs established in five schools around Lobeke NP
- Trained 43 eco-guards at the Kongana center in the Dzanga-Ndoki NP
- Three month training executed for three nationals on monitoring and evaluation in the Nouabale-Ndoki NP
- Training of Nouabale-Ndoki NP staff on the links between human and animal health
- Training of Mambele and Yenga villages in the Lobeke extractive zone on management plans
- Training in five villages in the Lobeke extractive zone on forest inventories, monitoring and legal procedures.



- Support to environmental education programs in the schools of the Kabo FMU, Pokola FMU, and Loundoudou-Toukoulaka FMU extractive zones

3.6 COMIFAC/CBFP Landscape #6 : Léconi-Batéké-Léfini

Area 1- Harmonization of forest and taxation policies

- Supported the elaboration and validation of trans-boundary agreements (Gabon/Congo) to permit the circulation of project staff in landscape
- Meeting between Congo and Gabon to coordinate elephant programs

Area 2- Knowledge of the Resource

- Support to the monitoring of elephants in Bateke Plateau NP

Area 3- Management of Ecosystems and Reforestation

- Supported the adoption of the management and land-use for Bateke Plateau NP
- Support to villages to start elaborating a management plan in the Bambama and Zanaga CBNRM zones (Congo)
- Management and land-use plan adopted for the Léfini Reserve CBNRM zone

Area 4- Biodiversity Conservation

- Meeting with Congolese government on the creation of the new protected area of Ogooue-Leketi NP
- Ten meetings with villages concerning the new protected area of Ogooue-Leketi NP to develop communication strategies

Area 5- Sustainable Valorisation of Forest Resources

- Support to the Bateke Plateau NP authorities on poaching patrols
- Created three Village Cultural Centers, where villagers and local people can find copies of their Land-use Plans, natural resource management documents, information about climate change, agricultural technical guidelines, and photos and books about biodiversity and local wildlife

Area 6- Development of alternative activities and poverty alleviation

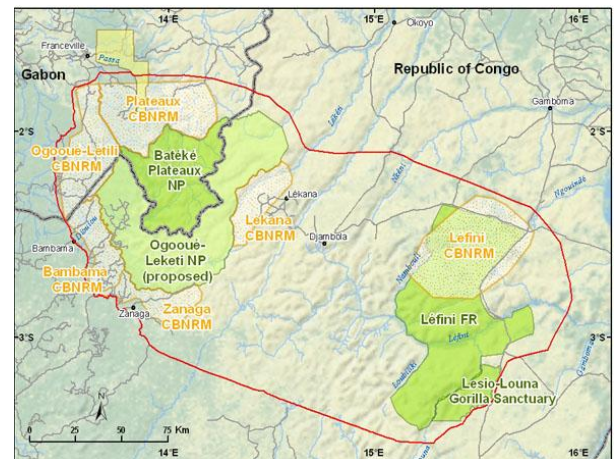
- Local NGOs trained on project management in the Bambama and Zanaga CBNRM zones

Area 7- Capacity building, stakeholder participation, information, training

- 27 ANPN, MINEF, Rougier, and WCS staff trained onon MIST (Law Enforcement Software)

Area 11- REDD

- A training of trainers workshop concerning climate change Un Atelier de formation pour les formateurs a été tenu sur le changement climatique
- Climate change workshops held in 14 villages in the landscape for over 200 participants



3.7 COMIFAC/CBFP Landscape #7 : Lac Télé-Lac Tumba

Area 1- Harmonization of forest and taxation policies

- Support to the creation of the Lac Télé-Lac Tumba trans-boundary RAMSAR site

Area 2- Knowledge of the Resource

- Support to the habituation of bonobo populations near Nkala and Mpelu villages in the Nkala-Nko CBNRM zone (Congo) and the Mbee et Lenga villages in the Sebo pasture zone (DRC)

Area 3- Management of Ecosystems and Reforestation

- Management and land-use plan elaborated for the Lac Télé community reserve
- Support to the legal and institutional framework design of community micro-zones in the proposed Tanga river CBNRM zone
- Support to the participatory mapping of the proposed Dongoi CBNRM zone

Area 4- Biodiversity Conservation

- Support to the classification process of the Ngiri Biosphere reserve

Area 5- Sustainable Valorisation of Forest Resources

- Support to the installation of an anti-poaching control post in Buanela (Congo)
- Support to the Ministry of Water and Forests (Congo) concerning poaching in the proposed Impfondo CBNRM zone
- A meeting was held to gain consensus amongst local populations on a hunting calendar for community forests in the Nkala-Nko CBNRM zone (DRC)
- A meeting was held with the Bikoro police to discuss how they can be implicated in the application of law in the Lac Tumba extractive zone.

Area 6- Development of alternative activities and poverty alleviation

- Support to the development of alternative activities in the Ngiri proposed Biosphere Reserve
- A study was executed to examine the fisherman's needs and design a sustainable fishing program

Area 7- Capacity building, stakeholder participation, information, training

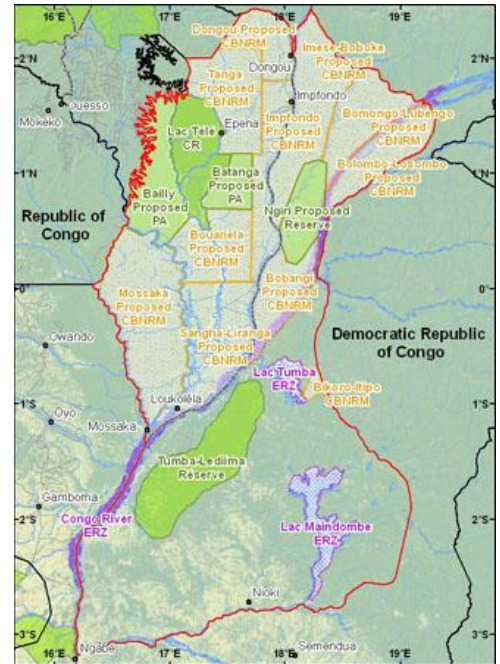
- Supported an education campaign for local populations concerning the forestry code and community forests in the proposed Ngombe CBNRM zone (DRC)
- Support to radio diffusions to educate populations on the implications of the Congo river zone as a RAMSAR site (DRC)

Area 8- Research and Development

- Support to the Mabali Scientific Reserve (DRC)

Area 10- Regional Cooperation and Partnerships

- A meeting was organized to engage SIFORCO Danzer concerning potential collaboration on conservation and anti-poaching activities in their concession (DRC)
- On 5 August 2010, the bi-lateral agreement between the Congo and DRC concerning the transboundary management of the landscape was signed by Minister José Endundo Bonongé (DRC) and Minister Henri Djombo (Congo). This agreement, under the umbrella of COMIFAC, recognizes, *de facto*, the Lac Télé – Lac Tumba landscape as an official entity and elucidates a system of coordination and priority themes for future transboundary collaboration



3.8 COMIFAC/CBFP Landscape #8 : Salonga-Lukenie-Sankuru

Area 2- Knowledge of the Resource

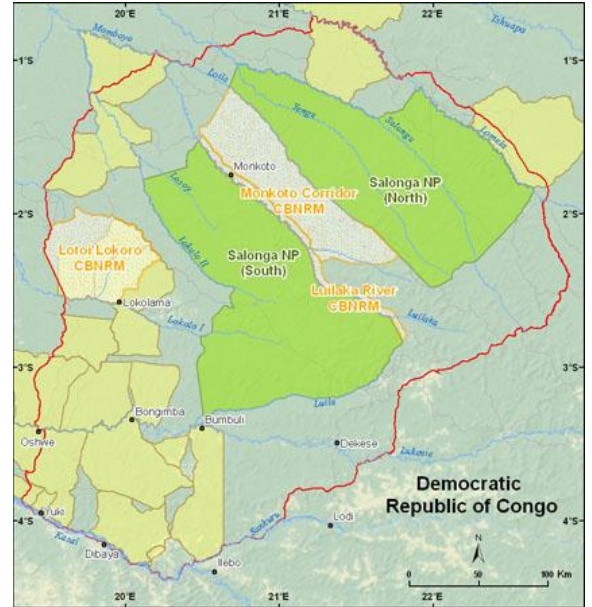
- Support to the collection of fishing data of tributaries of the Luilaka river
- Inventories of key wildlife species in Salonga NP

Area 3- Management of Ecosystems and Reforestation

- Six (6) meetings held in the landscape towards the validation of management plans
- Adoption of Monkoto Corridor and the endorsement of the Monkoto Corridor Management Plan by the Provincial Ministry of Environment for Equateur Province.
- 60km of Salonga National Park (SNP) boundary demarcated in an area east of the park, Nongelokwa, where there is a history of conflict.

Area 4- Biodiversity Conservation

- Support to the management authorities of Salonga NP
- Area 5- Sustainable Valorisation of Forest Resources**
- Organization of workshop to develop an anti-poaching strategy for Salonga NP
 - Direct support to functioning of three eco-guards in Salonga NP
- Area 6- Development of alternative activities and poverty alleviation**
- Support to community groups through provision of seeds and materials for alternative activities
 - Distribution of agriculture tools to 64 villages
 - Support to Bantu associations to improve agricultural practices and palm oil production
 - Support to the establishment of four seed production gardens
- Area 7- Capacity building, stakeholder participation, information, training**
- Support to an adult literacy program in four villages around Bofoku Mai resulting in an increase in students from 140-180
 - Nine villages, including 250 families, trained on community organization and agricultural techniques
 - Training of eco-guards in Salonga NP on bio-monitoring and the application and monitoring of laws
 - Training of 20 local associations on agricultural production
 - Capacity of eight agricultural extension agents from the local administration in the territories of Monkoto and Oshwe, strengthened in monitoring farming activities, environmental education and population health concepts



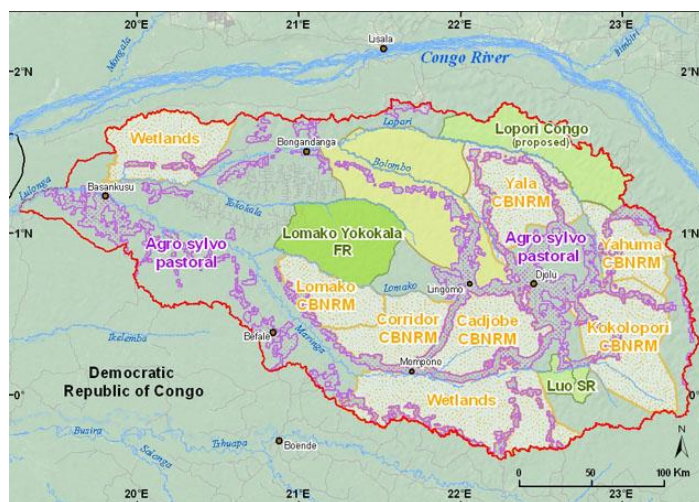
3.9 COMIFAC/CBFP Landscape #9 : Maringa-Lopori-Wamba

- Area 2- Knowledge of the Resource**
- A large mammal survey was conducted that estimated the number of bonobos within the Lomako-Yokokala wildlife reserve at 910 (95% Confidence Interval 497-1668). A team of AWF and ICCN staff were trained in standardized survey methodologies and techniques.
 - Developed a standardized methodology for biodiversity surveys with a focus on target species throughout the landscape.
 - Continuation of study on land use patterns vs active fire points vs population's migratory movement and their socio economic impact landscape
- Area 3- Management of Ecosystems and Reforestation**
- The MLW consortium along with DIAF, local community-based NGOs (including CEPAD, PERSE, GACC, et.al.), and local communities executed 2,000km² of micro-zoning in an area which had been flagged as important for connectivity between protected areas in prior macro-zoning. The micro-zoning outputs were approved by communities, the local and provincial administrative authorities, and the landscape steering committee.
 - Support to 40% of eco-guards salary of Lomako-Yokokala wildlife reserve
- Area 4- Biodiversity Conservation**
- Information on creation and functioning of the Protected Area distributed in/on National newspapers, television, radio
 - Worked with stakeholders to develop a draft land use management plan for the proposed future lyondji bonobo reserve
- Area 6- Development of alternative activities and poverty alleviation**

- Support to the operation of two barges to operate between Kinshasa and landscape to transport 600 tons of goods twice per year

Area 7- Capacity building, stakeholder participation, information, training

- A five-day training on non-violent conflict resolution was conducted for 29 ICCN guards and four members of the ICCN administration/ senior officers.
- 10 Congolese interns worked in the field during the year: three in biology, two in public participation, one in agronomy, one in enterprise development, one in GIS, and two in communications.
- Workshops held throughout landscape to educate local populations on zoning process
- Trainings for local populations on agricultural techniques, agro-forestry, and agricultural monitoring



Area 8- Research and Development

- A detailed business plan for the Lomako Conservation Science Center (LCSC), which was created in 2009, was formally accepted by ICCN and local communities

Area 9- Financial Mechanisms Developed

- Local management committee for use of revenue from scientific tourism created and enforced.

3.10 COMIFAC/CBFP Landscape #10 : Maiko-Tayna-Kahuzi Biega

Area 2- Knowledge of the Resource

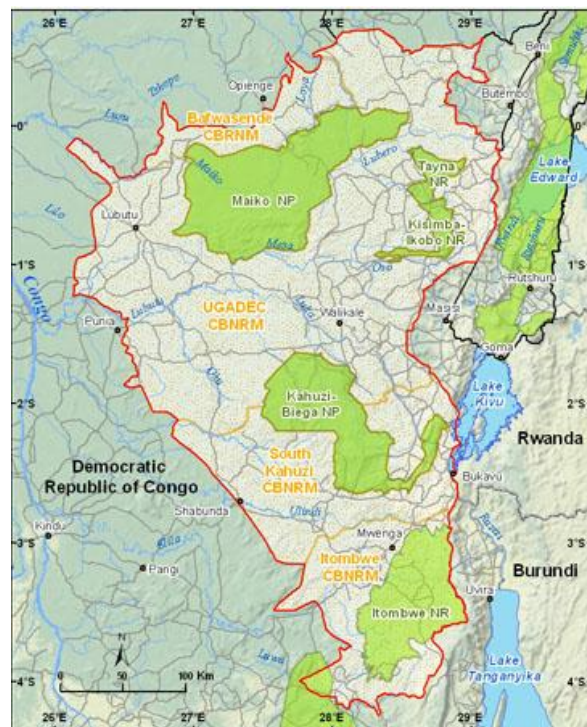
- Collection of key wildlife species data in Maiko NP and UGADEC CBNRM zone
- Support to bio-monitoring patrols in Tayna natural reserve
- Support to data collection and habituation of gorillas in Tayna natural reserve

Area 3- Management of Ecosystems and Reforestation

- Collection and incorporation of biological and socio-economic data in Maiko NP
- Meeting held to evaluate 2009 activities and plan the activities on 2010 for the 2010 Maiko NP management plan
- Draft Maiko NP management plan submitted to ICCN
- Support to community associations to evaluate and prepare their management plan activities in the UGADEC CBNRM zone

Area 4- Biodiversity Conservation

- Three workshops with stakeholders to discuss the effective management of Maiko NP
- Support to building rental of : four offices for Maiko NP, the Butembo office of Tayna natural reserve, two offices of Kisimba-Ikobo natural reserve, and six offices of local associations of the UGADEC CBNRM zone
- Equipment support to posts and field agents of Tayna and Kisimba-Ikobo natural reserves



Area 5- Sustainable Valorisation of Forest Resources

- Organization of monthly patrols in the Kisimba-Ikobo natural reserve

Area 6- Development of alternative activities and poverty alleviation

- Support to the construction and equipping of the Kira in the Kisimba-Ikobo natural reserve

Area 7- Capacity building, stakeholder participation, information, training

- Support to a communication program at the landscape level concerning the importance of Kahuzi-Biega NP
- Training of field agents on data collection, financial administration, and management in the Tayna natural reserve
- Production and distribution of 1000 informational flyers on zonage and support to daily environmental education radio programs in the Tayna natural reserve
- Showing of environmental education films in seven villages around the Tayna natural reserve
- Environmental education radio programs in the Kisimba-Ikobo natural reserve
- Training of local associations on the use of equipment (GPS, compasses, etc) in the UGADEC CBNRM zone

Area 11- REDD

- Secured a REDD pilot project with the *Walt Disney Company*, for the Tayna and Kisimba reserves
- Three trainings of 483 total persons on climate change, carbon credits, and biomass data collection

3.11 COMIFAC/CBFP Landscape #11 : Ituri (Okapi)

Area 2- Knowledge of the Resource

- Wildlife inventories of key species in Okapi reserve

Area 3- Management of Ecosystems and Reforestation

- Platform of community organizations implicated in natural resource management created and recognized
- Mapping of hunting areas around three villages in the Okapi reserve
- Base geo-reference map of Okapi reserve produced
- Five agricultural zones defined and recognized in Okapi reserve
- Five wildlife corridors negotiated and established with local customary authorities along the northeastern border of the Okapi reserve

Area 4- Biodiversity Conservation

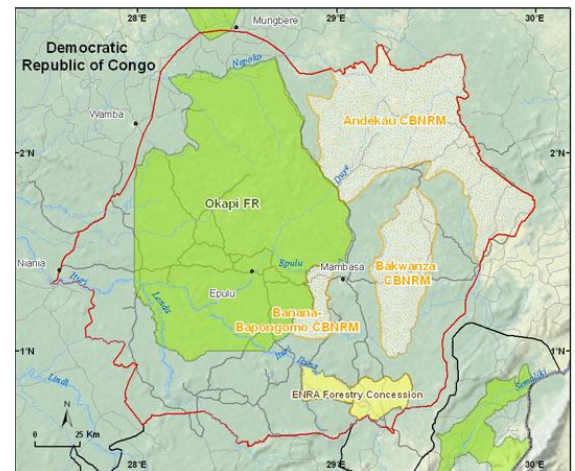
- Equipment support (motorcycle and bicycles) to Okapi reserve field agents

Area 6- Development of alternative activities and poverty alleviation

- Support (seeds and tools) to local agricultural organizations (500 households) to increase production
- Two cooperative agreements concerning alternative activities facilitated with CIFOR for local organizations in the Banana CBNRM zone
- The establishment of seven cocoa nurseries yielding 118,700 seedlings of which 53,800 cocoa seedlings were distributed to 170 farmers

Area 7- Capacity building, stakeholder participation, information, training

- 12 trainings organized concerning natural resource management for community organizations
- Five trainings organized concerning cassava conservation for community organizations
- 750 women in 23 women's groups enrolled in literacy and numeracy program in landscape
- 57 local NGOs and community associations trained on project management and reporting in Okapi reserve



- Training of 15 technicians from the Ministry of the Environment and the University of Kisangani in forest carbon measurement and botanical identification of forest trees.

Area 11- REDD

- The establishment of 40 plots (totaling 10 ha) in artisanal logging concessions to evaluate standing carbon stocks and the impacts of artisanal timber exploitation on carbon density and associated carbon dioxide emissions.

3.12 COMIFAC/CBFP Landscape #12 : Virunga

Area 2- Knowledge of the Resource

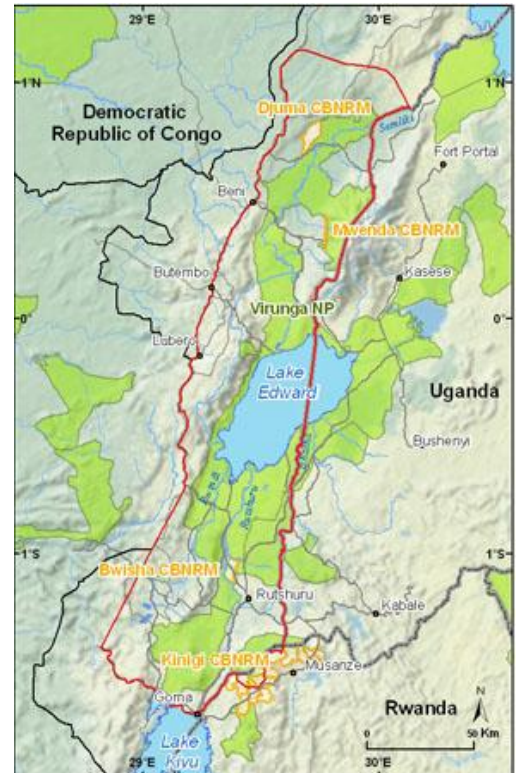
- Inventories of key wildlife species in Virunga NP

Area 3- Management of Ecosystems and Reforestation

- Draft management and land use plan elaborated for Virunga NP
- 600 hectares of reforestation in 4 territories of landscape (Masisi, Rutshuru, Beni and Lubero)

Area 6- Development of alternative activities and poverty alleviation

- Socio-economic study in the Bwisha and Djuma CBRNM zones (DRC) executed
- 15 rain reservoirs constructed in the Kinigi CBNRM zone in the Gahunga sector (Rwanda)
- Support the network of women's groups in Goma and Beni in production of improved wood stoves (at least 14 000 wood stoves produced)



Annexe 1 : Budget CARPE Analysé Selon les Catégories d'Activités COMIFAC

	Activités Transversales ¹								Total
	(par année \$US)								(\$US)
Axes Stratégiques	2004	2005	2006	2007	2008	2009	2010	2004-10	
Harmonisation des politiques forestières-fiscal	344,765	429,857	353,514	1,155,654	987,800	1,194,929	1,199,000	5,665,518	
Connaissance de la ressource	989,055	895,754	789,242	668,275	632,400	758,510	715,487	5,448,723	
Aménagement écosystèmes-reboisement	183,335	191,529	164,137	344,396	327,000	257,092	355,000	1,822,488	
Conservation diversité biologique	250,458	180,837	94,232	363,792	304,000	314,184	2,820,000	4,327,503	
Valorisation durable des ressources forestières	-	-	-	-	-	-	-	-	
Activités alternatives-réduction pauvreté	74,485	30,652	16,427	-	-	-	-	121,565	
Capacités, participation, info, formation	1,877,330	2,066,626	1,651,506	2,926,842	2,618,800	2,946,204	3,022,991	17,110,299	
Recherche-développement	-	-	-	-	-	-	-	-	
Développement mécanismes finances	22,741	28,469	15,257	-	-	-	-	66,467	
Coopération et partenariat	23,380	29,269	15,685	-	-	-	-	68,334	
Total	3,765,550	3,852,993	3,100,000	5,458,958	4,870,000	5,470,919	8,112,478	34,630,898	
	Activités Basées aux Paysages ²								Total
	(par année \$US)								(US\$)
Axes Stratégiques	2004	2005	2006	2007	2008	2009	2010	2004-10	
Harmonisation des politiques forestières-fiscal	457,081	514,231	420,610	104,331	134,703	181,201	167,712	1,979,870	
Connaissance de la ressource	2,898,856	3,261,310	2,667,553	2,916,446	2,143,595	1,725,263	1,565,043	17,178,066	
Aménagement écosystèmes-reboisement	428,213	481,754	394,045	-	9,249	20,294	30,940	1,364,494	
Conservation diversité biologique	1,284,638	1,445,261	1,182,135	1,319,441	2,010,016	1,491,487	2,004,734	10,737,712	
Valorisation durable des ressources forestières	-	-	-	-	-	-	-	-	
Activités alternatives-réduction pauvreté	214,106	240,877	197,023	710,468	1,082,316	803,108	1,079,472	4,327,371	
Capacités, participation, info, formation	6,227,129	7,005,727	5,730,258	3,342,822	4,235,203	3,692,165	3,097,938	33,331,240	
Recherche-développement	-	-	-	-	-	-	-	-	
Développement mécanismes finances	214,106	240,877	197,023	174,460	233,052	234,623	183,897	1,478,039	
Coopération et partenariat	220,121	247,643	202,557	962,031	1,281,866	1,380,939	1,257,786	5,552,944	
Total	11,944,251	13,437,680	10,991,203	9,530,000	11,130,000	9,529,080	9,387,522	75,949,736	
Montant Total Activités	15,709,801	17,290,673	14,091,203	14,988,958	16,000,000	14,999,999	17,500,000	110,580,634	
1. Activités transversales incluent: cartographie satellitale, appui société civile, suivi concessions forestières									
2. Activités aux paysages incluent l'application des pratiques de bonne gestion de ressources naturelles dans les Paysages PFBC									
A noter: Ces données sont des estimations. Elles incluent les fonds du U.S. Fish and Wildlife Service, qui est en collaboration avec CARPE.									

	Activités Transversales et Basées aux Paysages							Total
	(par année \$US)							(US\$)
Axes Stratégiques	2004	2005	2006	2007	2008	2009	2010	2004-10
Harmonisation des politiques forestières-fiscal	801,846	944,088	774,124	1,259,985	1,122,503	1,376,129	1,366,712	7,645,388
Connaissance de la ressource	3,887,912	4,157,064	3,456,795	3,584,721	2,775,995	2,483,773	2,280,530	22,626,790
Aménagement écosystèmes-reboisement	611,548	673,282	558,182	344,396	336,249	277,386	385,940	3,186,983
Conservation diversité biologique	1,535,097	1,626,098	1,276,368	1,683,232	2,314,016	1,805,671	4,824,734	15,065,215
Valorisation durable des ressources forestières	-	-	-	-	-	-	-	-
Activités alternatives-réduction pauvreté	288,592	271,529	213,449	710,468	1,082,316	803,108	1,079,472	4,448,935
Capacités, participation, info, formation	8,104,459	9,072,353	7,381,763	6,269,664	6,854,003	6,638,369	6,120,929	50,441,539
Recherche-développement	-	-	-	-	-	-	-	-
Développement mécanismes finances	236,848	269,346	212,279	174,460	233,052	234,623	183,897	1,544,506
Coopération et partenariat	243,501	276,912	218,242	962,031	1,281,866	1,380,939	1,257,786	5,621,278
Total	15,709,801	17,290,673	14,091,203	14,988,958	16,000,000	14,999,999	17,500,000	110,580,634

Annexe 2 : Sommaire des Activités de Formation

1 Octobre 2009 – 30 Juin 2010

	Academique		Professional/Technique		Atelier		Sensitization		Ecogardiens		Grand Total	
	Men	Wom.	Men	Wom.	Men	Wom.	Men	Wom.	Men	Wom.	Men	Wom.
Paysage												
MAMC			38	10	25	15					63	25
Gamba	3	4	508	327	40	0	500	500	31	0	1082	831
Lope			74	9							74	9
Tridom			341	26	68	7			2	0	411	33
TNS	1	2	639	68	85	24	0	0	168	3	893	97
Leconi	3	0	90	18	124	32	152	118	10	0	379	168
LTLT			394	103							394	103
Salonga			2452	1975	503	179			32	0	2987	2154
MLW			322	175	232	103					554	278
MTKB			154	37	280	162	841	121			1275	320
Ituri			268	88	620	276					888	364
Virungas			58	90							58	90
Transversales												
NASA	374	43	44	5							418	48
WRI			273	82							273	82
IUCN			52	19	208	77					260	96
USFS			53	3	81	11					134	14
Total	381	49	5760	3035	2266	886	1493	739	243	3	10143	4712