

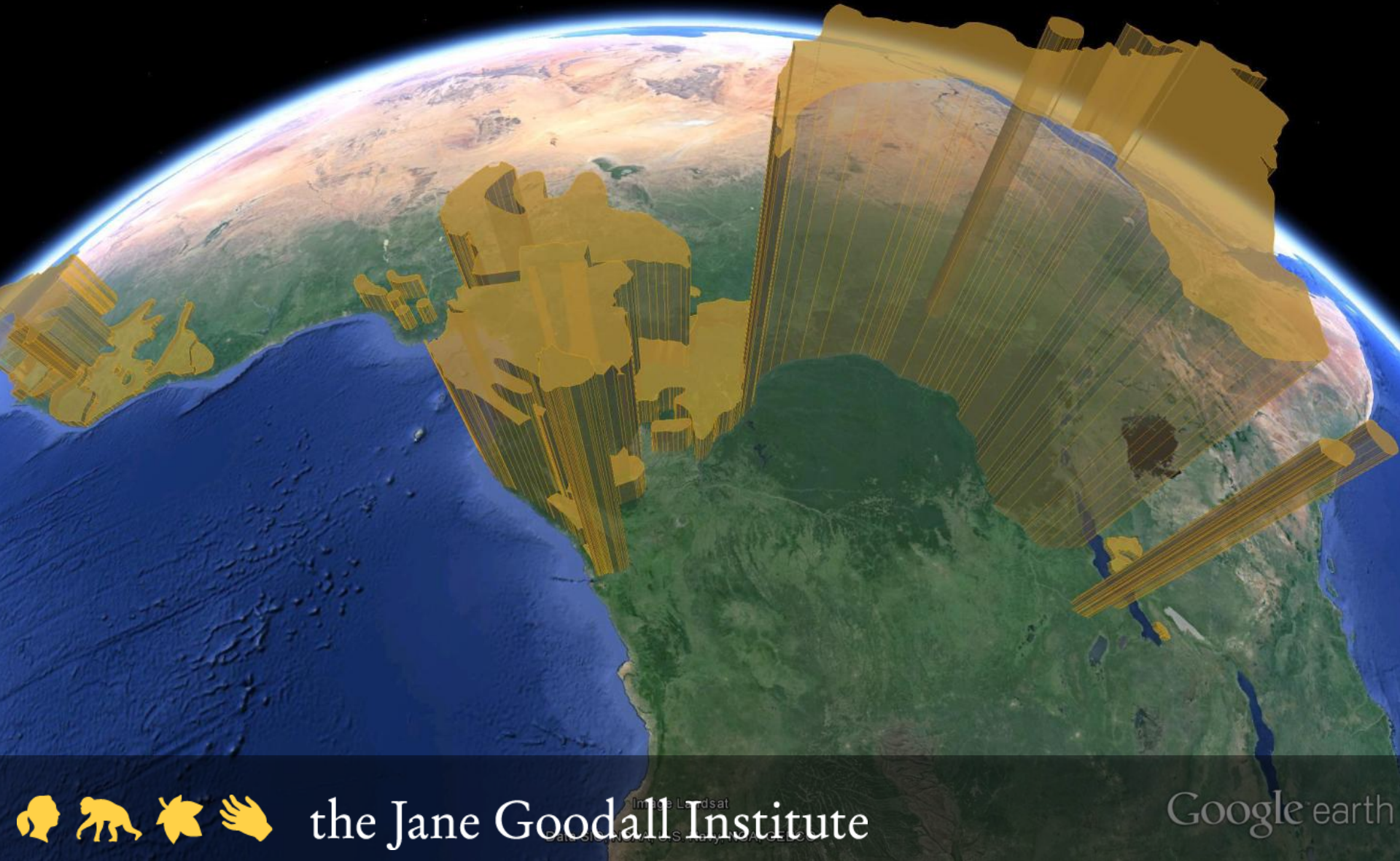
JGI in the DRC



the Jane Goodall Institute

Google earth

Protecting the Congo Basin is critical to our mission:
Between 77% to 83% of the total number of chimpanzees in Africa live
in just 4 countries in the Congo Basin

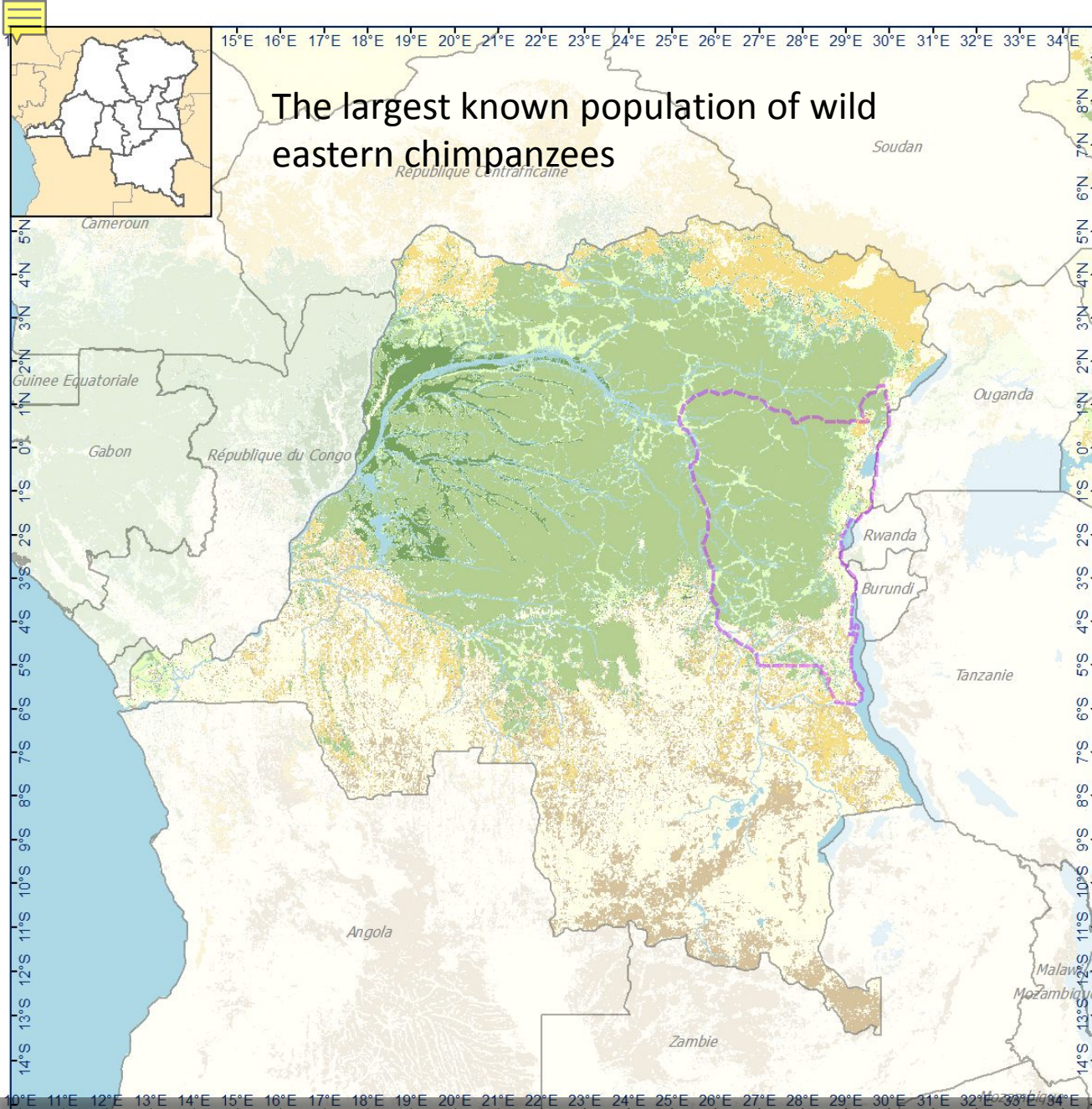


the Jane Goodall Institute

Google earth

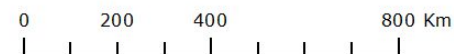


The largest known population of wild eastern chimpanzees



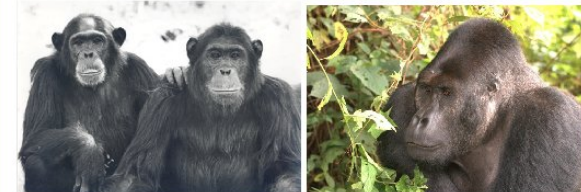
- Zone premiere de planification
 - Eau surfacique
 - Riviere principale
- Végétation**
- Autre
 - Surface en eau
 - Complexe rural
 - Forêt dense
 - Forêt dense sèche
 - Forêt édaphique
 - Mosaïque forêt-savane

Ape presence data intergated in GIS during the
CAP workshop: J. Hart; S. Nixon; A. Plumprte et al.
WCS; FFI, DFGFI-UGADEC; ZSL; et al.
GIS data processing: L. Pintea



the Jane Goodall Institute

MINISTÈRE DE L'ENVIRONNEMENT,
CONSERVATION DE LA NATURE,
ET TOURISME



Zone premiere de planification

- Chef lieu de Province
- Chef lieu de District
- Chef lieu de Territoire
- Autre ville

Infrastructure

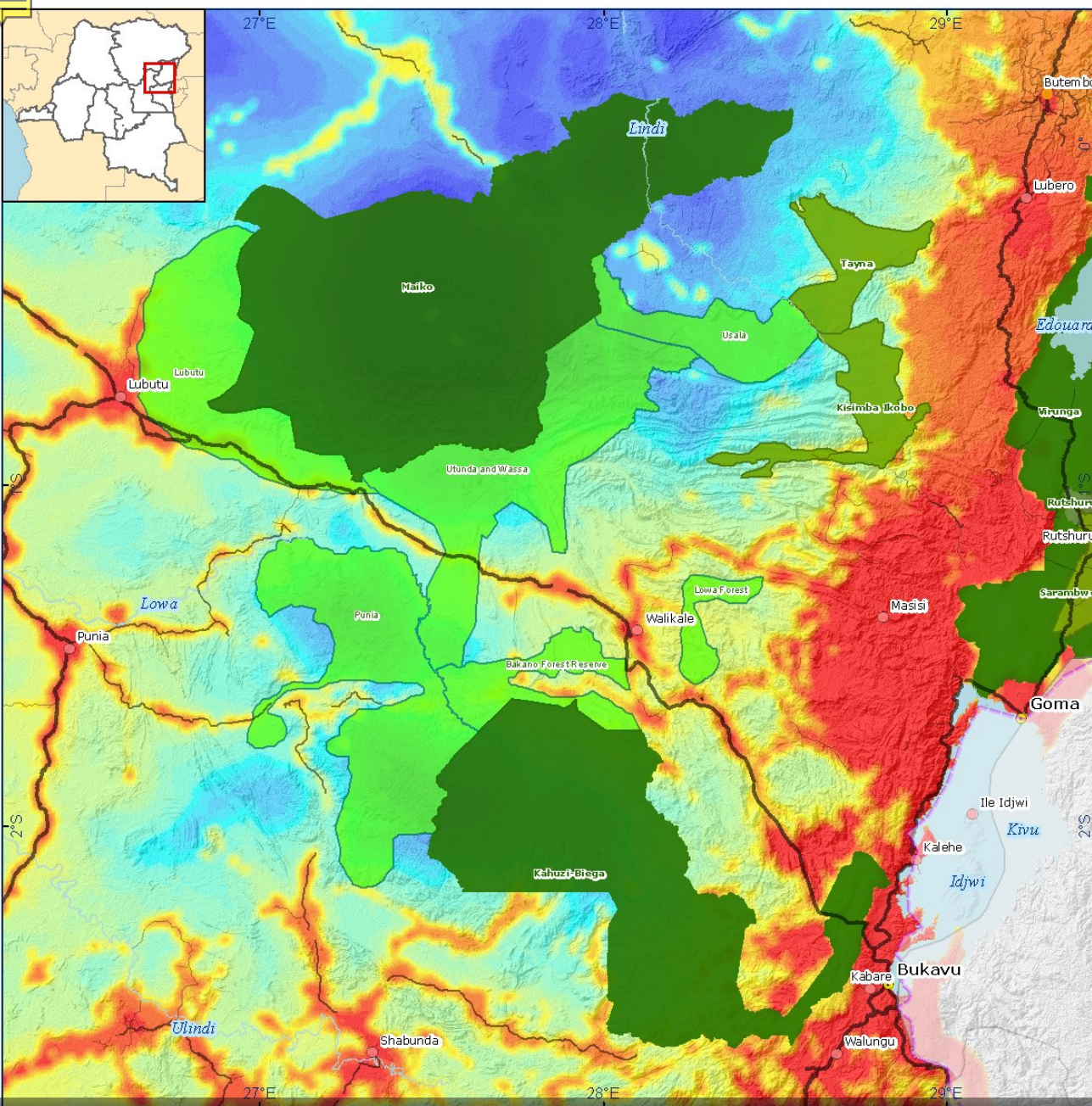
- Route nationale
- Route provinciale
- Route locale
- Voirie urbaine
- Piste d'exploitation
- Rivière principale

- Parc National
- Réserve Naturelle
- Domaine de Chasse
- Réserve communautaire
- UGADEC reserve

Value
High : 49
Low : 1



MINISTÈRE DE L'ENVIRONNEMENT,
CONSERVATION DE LA NATURE,
ET TOURISME



Threats to Great Apes persist



the Jane Goodall Institute



Important Step: Conservation Action Plan for Great Apes



- Zone premiere de planification
- Gorilla range (expert knowledge 2011 CAP)
- Chimpanzé (Plumptre et al. 2010)**
 - Confirme
 - Possible
- Water
- Major rivers
- Parc National
- Réserve Naturelle
- Domaine de Chasse
- Community reserves
- UGADEC reserve

Ape presence data intergated in GIS during the
CAP workshop in Goma and Bukavu : J. Hart; S. Nixon;
A. Plumptre et al.

WCS; FFI, DFGFI-UGADEC; ZSL; et al.
GIS data processing: L. Pintea

0 65 130 260 Km



the Jane Goodall Institute



Mbuji-Mayi Kabinda Tshilenge





Grauer's Gorillas and Chimpanzees in Eastern Democratic Republic of Congo

(Kahuzi-Biega, Maiko, Tayna and Itombwe Landscape)
Conservation Action Plan 2012–2022



Priority Conservation Strategies



KUUWA, KUNUNUWA, KUUZA, KUBEBA AO KUWEKA
SOKOMUTU AO NGILA
(Mzima ao yenye kufa)

SI HALALI

Wajihatarisha kufungwa **gerezani**

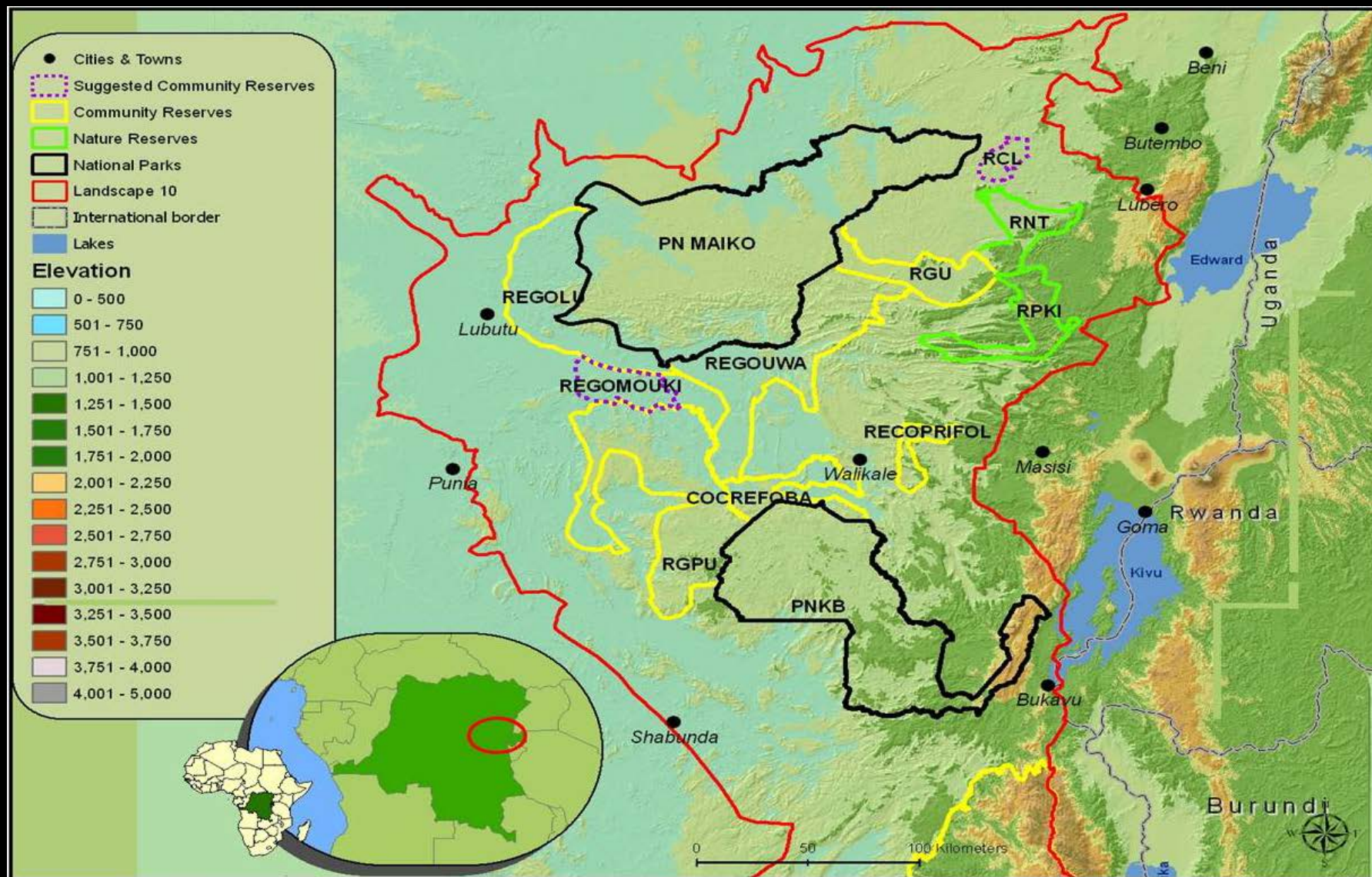


Yeyote aendaye kinyume ya sheria ataazibiwa kifungo cha miaka tatu hadi tano na kulipa franga kiasi ya milioni tano ya pesa za kikongomani



the Jane Goodall Institute

1.2M hectares in community reserves, improved livelihoods for those communities



the Jane Goodall Institute

Productive Health
Water and Sanitation
Alternative Energy



the Jane Goodall Institute

A Community Approach To Reproductive Health



Improving Access to Water and Alternative Energy



Improving Schools And Increasing Awareness



KUUWA, KUNUNUWA, KUUZA, KUBEBA AO KUWEKA
SOKOMUTU AO NGILA

(Mizima ao yenye kufa)

SI HALALI

Wajihatarisha kufungwa **gerezani**



Yeyote zendaye kinyume
ya sheria ataazibiwa
kifungo cha miaka tatu
hadhi tano na kullipa franga
klasi ya milioni tano ya
pesa za kikongomani

 Inuitua Jane Goodall

Sokomutu na Ngila

Si nyama za urafiki (nyumbani)



SABABU GANI?



Ni zenye **heri** tu zikiishi **porini**



Kwa kukamata kitoto, wawindaaji wa
uwizi wanapashwa kuuwa jamaa yake yote



Si halali kuziwinda, kuziiza, kuzinunua,
kuzibeba ao kuwa nazo nyumbani



Zinaweza kuambukiza watu
magonjwa



Zinapckomaha zinakuwa makali na
nasuu kuzilisha



Kuna hatari zipotee lote
duniani

 the Jane Goodall Institute



the Jane Goodall Institute





Strengthening Protection



the Jane Goodall Institute

Implementation of Priority strategies under Great Ape Conservation Action Plan



Testing ODK and Android tablets for Chimpanzee and Gorilla Surveys in Eastern DRC



Chryso Kaghoma, Field Research Assistant (FFI),
Eve Cizi Andagamo, ICCN Researcher and Kahuzi
Biega National Park rangers

Chryso Kaghoma
Field Research Assistant (FFI) collecting data on
gorilla presence (dung) using Nexus 7 tablet in
Kahuzi Biega National Park (Source Stuart Nixon).



the Jane Goodall Institute

Type: Map | GeoPoint to Map: gps_altitude | Map It

Tabulation Method:
 COUNT: Count occurrences of Answer Values from device_id. (selected column)
 SUM: Sum numeric values from column: device_id





JGI & CAFEC: LandUse Planning, Education and Sustainable Agriculture



Thank You To Our Donors & Partners

- DRC Ministry of Environment
- UGADEC
- Institut Congolais pour la Conservation de la Nature
- Arcus Foundation
- USAID/CARPE
- USAID/Washington PRH/GH Office
- US Fish and Wildlife Service
- DFATD (formerly CIDA)

- Conservation International
- JGI USA, JGI Canada, JGI Australia & JGI Spain
- Dian Fossey Gorilla funds International
- Institute of Reproductive Health
- Mountain Gorilla Veterinary Project
- Disney Wildlife Conservation Fund
- Wildlife Conservation Society
- Fauna & Flora International
- Frankfurt Zoological Society
- Flora and Fauna International
- Zoo's Victoria



the Jane Goodall Institute