

# About

Founded in 1998, the Bonobo Conservation Initiative (BCI) is the only international organization solely dedicated to protecting wild bonobos and their rainforest habitat. BCI:

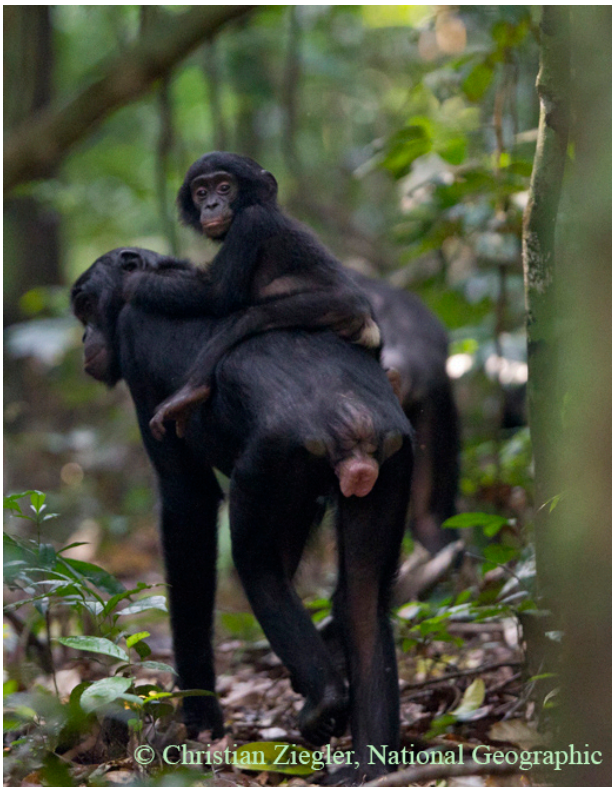
- ❑ Protects bonobos
- ❑ Preserves their tropical rainforest habitat
- ❑ Empowers local communities in the Congo Basin
- ❑ Works with the Congolese communities and organizations, the DRC government, and international partners
- ❑ Implements innovative solutions to address the complex problem of bonobo conservation



# Bonobos

First, a few quick words on bonobos.

A powerful flagship species for Conservation and Peace, and promotes community engagement





© Christian Ziegler, National Geographic





© Christian Ziegler, National Geographic



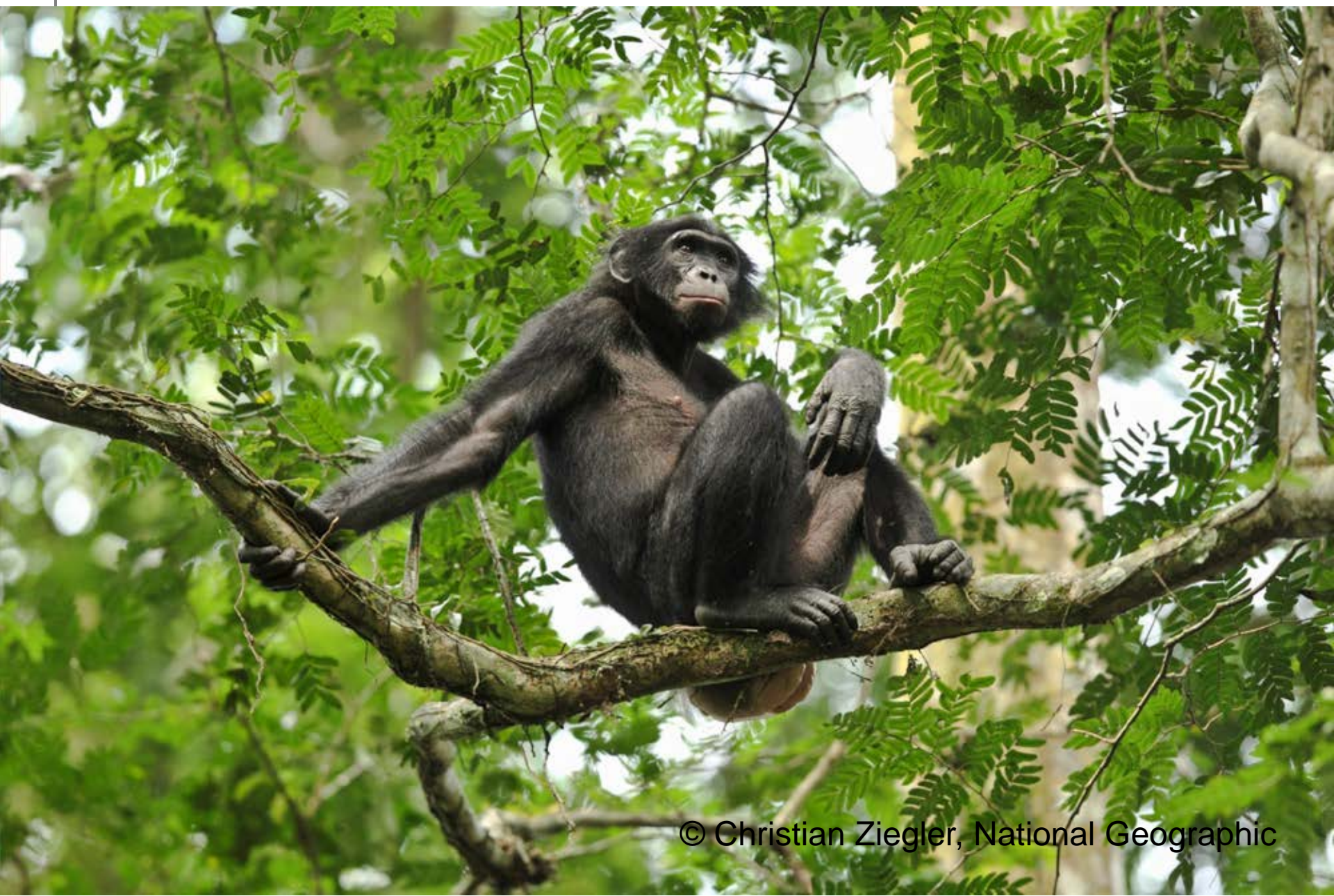
© Christian Ziegler, National Geographic





© Christian Ziegler, National Geographic





© Christian Ziegler, National Geographic

# Bonobo Peace Forest

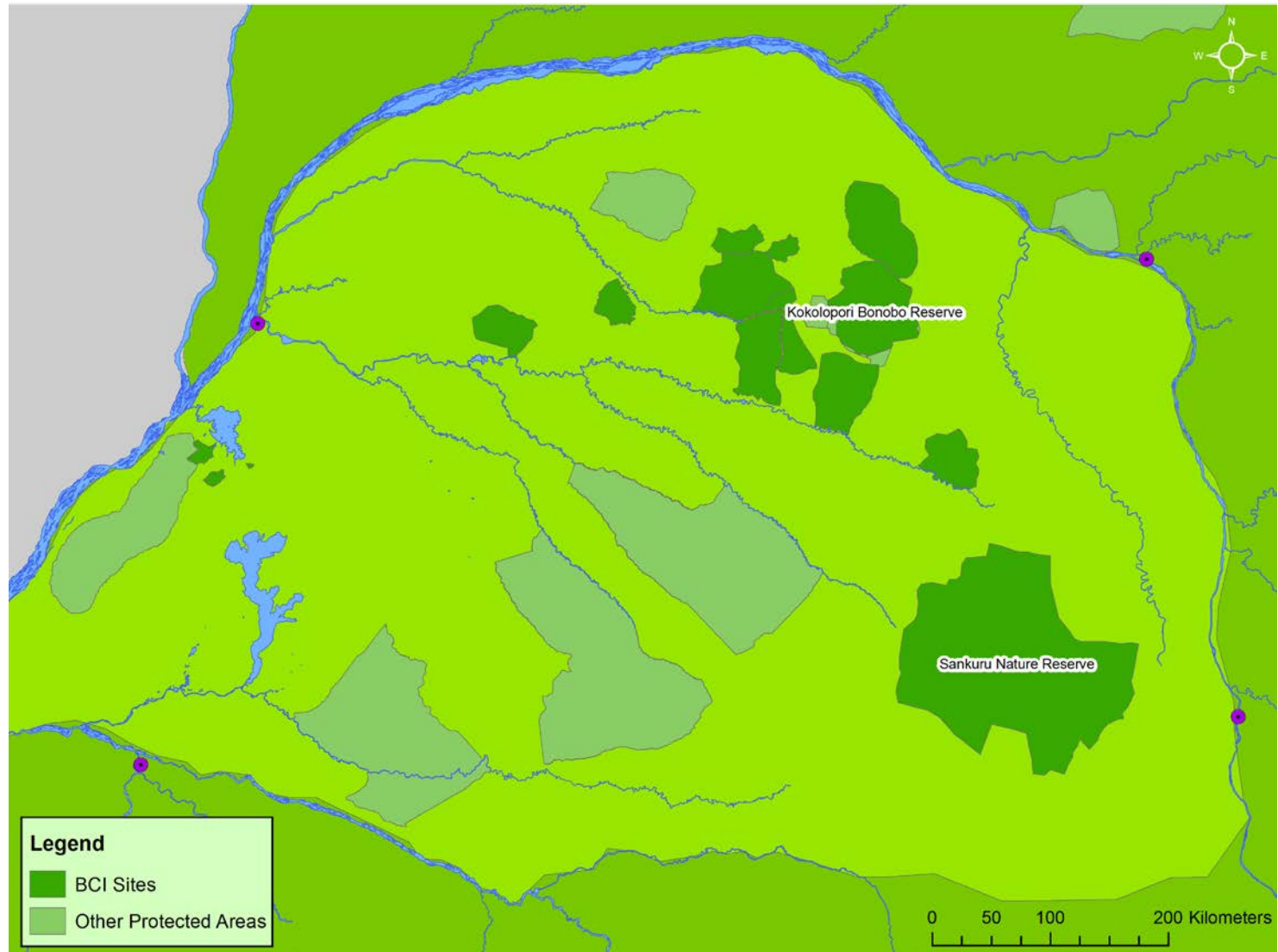
The Bonobo Peace Forest (BPF) is the guiding vision of BCI: a connected network of community-based reserves and conservation concessions, supported by sustainable development. Named in honor of the peaceful society of bonobos, the BPF:

- ❑ Fosters collaboration between BCI, local communities, partner organizations, and national leadership
- ❑ Protects bonobos
- ❑ Contains 11 active sites, including the Kokolopori Bonobo Reserve and the Sankuru Nature Reserve
- ❑ Covers more than 20,000 square miles of the Congo rainforest, including 12,000 sq. mi. of official protected areas.
- ❑ Is self-replicating—local residents in Likongo, Lingomo, Nkokolongo & Iyondji were so inspired by nearby Kokolopori that they formed their own community-managed reserves





# Bonobo Peace Forest



---

# BCI & CARPE

## CARPE Phase I

- Partnership with WWF & IRM in Lac Tumba – received \$375,000 over 3 years
- Partnered with AWF, CI and CARE in MLW – received \$3,750 for surveys from AWF. At the end of 3 years we received \$50,000 from CI for Infrastructure and livelihood programs.

## CARPE Phase II

No support or coordination





# Example

## Lac Tumba-

- ❑ BCI surveys discovered bonobos for the first time in Lac Tumba
- ❑ Signed 33 community agreements for conservation
- ❑ Signed accords for creation of 3 CBRs and delimited reserves.



# Local Partners

- ❑ Social Capital
- ❑ Community Leadership



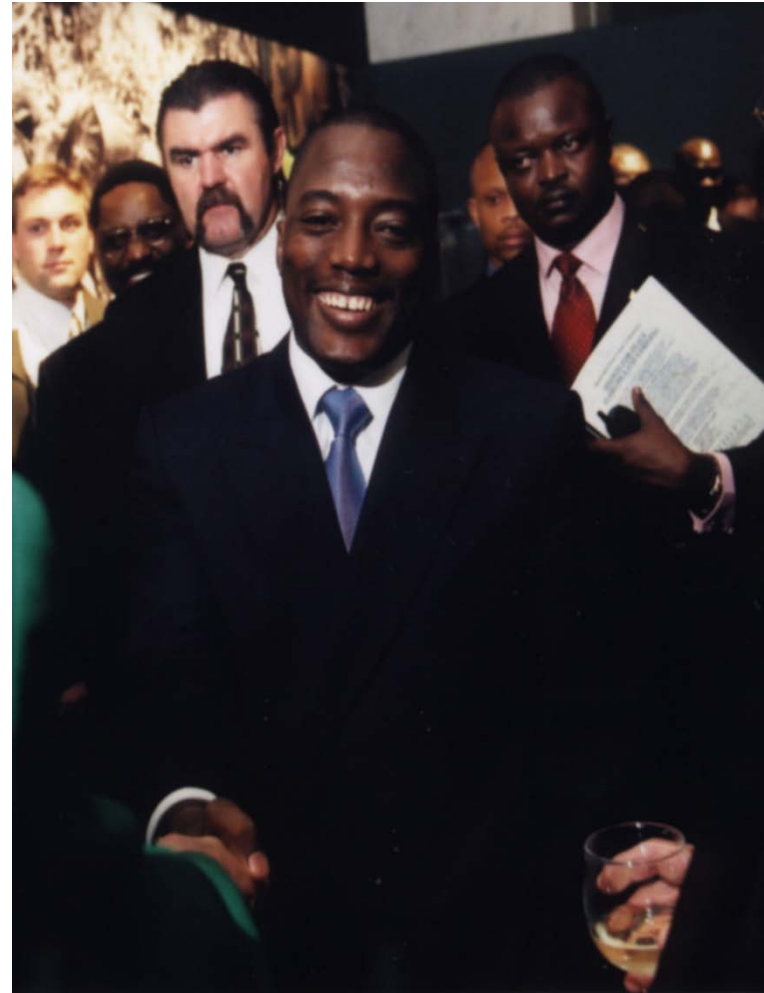
- ❑ Local Partnerships has been the core of our approach
- ❑ Local community organizations representing over 5,000 km<sup>2</sup> of forest land
- ❑ CCCB Statutes developed and registered – over 14 member groups, each representing multiple community associations



# Relationships – Local & National

## Some Examples:

- ❑ NGS event - In 2001, Joseph Kabila requested that BCI host his first official visit to the United States.
- ❑ In 2011 we signed agreement with Minister of Interior to protect bonobos & endangered species and with plans to mount police communications campaign – 85% of all DRC land and most biodiversity is not within protected areas under ICCN control. (presented at Bonobo Workshop, Jan. 2011)
- ❑ Top DRC rock stars are working with BCI for Awareness campaigns.



# BCI's Methods

- ❑ BCI's Priority work is with local communities in a holistic approach.
- ❑ Training & Capacity building – surveys, monitoring,
- ❑ Education
- ❑ Healthcare
- ❑ Livelihood























# Kokolopori Bonobo Reserve

BCI's model site for community-based conservation

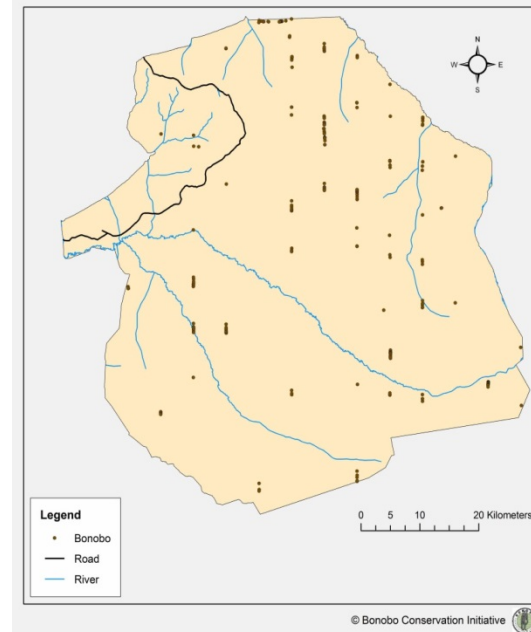
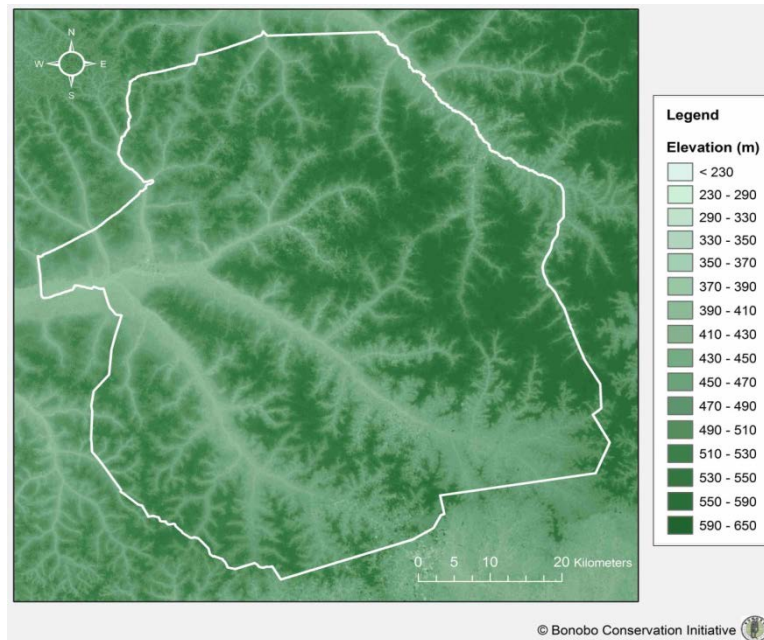
- ❑ USFWS funding has been critical to support BCI's surveys and other conservation efforts in The MLW landscape and elsewhere.





# Kokolopori Bonobo Reserve

- Gazetted in 2009 – 4,785 km<sup>2</sup>
- With over 1800 bonobos, it is one of the most important bonobo sites.
- According to the 2008 State of The Forest Report, Kokolopori has the highest percentage of remaining intact forest in the MLW Landscape, at 89.4%



# Biodiversity

At least a dozen species of primate, Aardvark  
Angolan cusimanse, Giant ground pangolin, Water  
Chevrotain, Forest elephant, Leopard, Golden cat,  
Aquatic genet , Giant genet, Bongo, Forest Buffalo,  
Hippopotami, Bush Pig ,Yellow-backed Duiker ,Bay  
Duiker , Peter's Duiker , Black-fronted Duiker, Blue  
Duiker , Giant Pouched Rat.

Includes the rare Salongo monkey, only confirmed to  
exist in Kokolopori.





# Self-replicating model

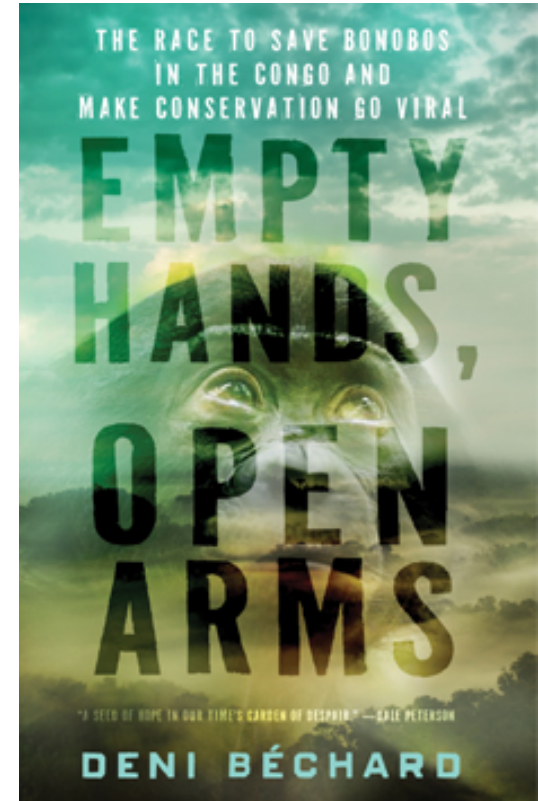
- Likongo, Lingomo and Nkokolombo, Iyondji
- Profiled in Deni Béchard's new book  
*Empty Hands Open Arms*

Deni Béchard's riveting journey through the "dark continent" provides a surprisingly uplifting story about a radically different and successful conservation program.

**David Suzuki, author of *The Sacred Balance: Rediscovering our Place in Nature***

Buy this book, and you will discover a seed of hope in our time's garden of despair.

**Dale Peterson, author of *The Moral Lives of Animals* and *Jane Goodall: the Woman who Redefined Man***



# Successes

BCI has achieved remarkable results at a fraction traditional costs. Accomplishments include:

- ❑ 35,000 km<sup>2</sup> gazetted
- ❑ Employed up to 200 monitors & conservationists.
- ❑ Identified bonobos and other biodiversity in more than a dozen survey sites.
- ❑ Raised awareness in the DRC and abroad
- ❑ Established the Djolu Technical College Conservation and Rural Development, accredited in 2012.
- ❑ Submitted the only official plan for conversion of logging concessions to conservation concessions – recognized by the Bank as a possible model, then funded by CBFF.
- ❑ Signed first REDD contract in the DRC for a project covering 3,000,000 hecatres.





# Institute Supérieur de Développement Rurale

Enrolls up to 70 students per year. Graduates have worked for AWF and other International NGOS. One graduate was appointed acting Administrator of the Territory.



#	Student name	Subject of the monograph	Assistant	Research supervisor	Current status
1	Atende Afoona	Analyse sur la commercialisation des produits agricoles vendus au marché central de Djolu.	Mbenga Mokula	Bondombe	En cours = ongoing
2	llonga Bandilu	Contribution des produits forestiers non ligneux dans le revenu des ménages de la population de Lingomo	Mbenga Mokula	Bondombe	En cours
3	Lokake Bononga	Exploitation artisanale de l'alcool 'Lotoko' et son impact dans le développement de la population rurale de Djolu	Mbenga Mokula	Bondombe	En cours
4	Bondonga lyoko	Comportement économique des femmes vendeuses des vivres dans le marché central de Djolu	Mbenga Mokula	Bondombe	En cours
5	Bofemba Loola	Identification des activités génératrices des revenus des ménages dans la cité de Djolu	Mbenga Mokula	Bondombe	En cours
6	Botamba Djali	La contribution des Eglises dans le développement du territoire de Djolu	Bonoko Bolayi	Kadange	En cours
7	Bonowela longole	Problématique du sous-développement du milieu rural dans le cadre de la xénophobie : Analyse des causes et des effets dans la cité de Djolu	Bonoko Bolayi	Kadange	En cours
8	Bofamba llonga	Problématique de la baisse du niveau intellectuel de la nouvelle génération depuis l'an 2000 à nos jours : étude menée dans la cité de Djolu.	Bonoko Bolayi	Kadange	En cours
9	Baolinda Bofangi	Construction des campements dans la forêt du secteur Luo et son impact sur l'environnement	Bonoko Bolayi	Kadange	En cours
10	Lokela Losilo	Impact des engins de chasse sur l'environnement : Etude menée dans le territoire de Djolu	Bonoko Bolayi	Kadange	En cours
11	Ekolo Bofola	Analyse de la situation des ménages au milieu rural : Etude menée dans la cité de Djolu	Bonoko Bolayi	Kadange	En cours
12	Bakili Bofaso	La commercialisation des produits forestiers non-ligneux dans le marché central de Djolu	Mbenga Mokula	Bondombe	En cours
13	Mpanga Batsina	Conséquence des naissances précoces : Obstacle pour l'épanouissement de la femme	Bonoko Bolayi	Kadange	En cours
14	Kundawili Sombolo	Problématique de l'épargne en milieu rural : Cas de la cité de Djolu	Mbenga Mokula	Bondombe	En cours
15	Ingoli Ingoli	Impact du ramassage des chenilles comestibles dans le développement du territoire de Djolu	Mbenga Mokula	Bondombe	En cours



16	Liya Ntela	Les produits forestiers non ligneux mais destinaux et le vécu de la population de la cité de Djolu	Mbenga Mokula	Bondombe	En cours
17	Epoko Longomo	Observations sur le comportement des variétés améliorées des maniocs dans les conditions édapho-climatiques de Djolu	Lisasi Likombi	Lofinda lifake	En cours
18	Balelo Bokonda	Observations préliminaires du comportement des variétés améliorées des maniocs dans les conditions édapho-climatiques de Djolu	Lisasi Likombi	Lofinda lifake	En cours
19	Litaka Bokumo	Impact de la pollution de l'eau sur quelques éléments de l'environnement du secteur de Lingomo	Lisasi Lifake	Lofinda lifake	En cours
20	Botsuko Nkele	Exploitation des champignons sauvages : portée et limitation à Kokolopori	Lisasi Likombi	Lofinda Lifake	En cours
21	Embele Lofoko	Inventaire de la biodiversité de la réserve naturelle de bonobo de Kokolopori	Lisasi Likombi	Lofinda Lifake	En cours
22	Boombo Nkoy	Analyse de la transformation artisanale des produits agricoles : Etude menée dans la cité de Djolu	Lisasi Likombi	Lofinda Lifake	En cours
23	Leno Ingoli	La problématique de l'accroissement des naissances dans le territoire de Djolu : Etude menée dans le secteur Luo	Lisasi Likombi	Lofinda lifake	En cours
24	Lokuli Lokuli	Evaluation des dégâts causés par la peste porcine africaine sur l'élevage porcin dans la cité de Djolu	Lisasi likombi	Lofinda Lifake	En cours
25	Lokuli Itsinga	Problématique de l'agriculture itinérante sur brûlis sur la gestion de la biodiversité dans la cité de Djolu	Lisasi Likombi	Lofinda Lifake	En cours
26	Bolawa Bakombo	Technique d'extraction du miel utilisée par la population Bongando et son impact sur l'environnement (Etude menée dans le territoire de Djolu).	Lisasi Likombi	Lofinda Lifake	En cours

---

# CARPE PHASE III

Albert Lokasola, head of Vie Sauvage & Kokolopori Bonobo Reserve, was elected to DRC Parliament as a direct result of the positive impact of our work in the Djolu Territory. With the Kokolopori Reserve, Iyondje, the satellite sites, the Djolu Technical College, Luo Scientific Reserve, we have a great opportunity to create a vast conservation corridor and a conservation ethic in this entire region—and we want to join forces with AWF to build on this potential.

BCI President, my colleague Sally Coxe sends her best to all of you from Kinshasa. She wishes she could be here. She has just had positive discussions with AWF in Kinshasa and we look forward to increasing collaboration in a meaningful and productive way in the year ahead





# Partners & Supporters



# Q&A and Further Information



[www.bonobo.org](http://www.bonobo.org)



© Christian Ziegler, National Geographic



[www.facebook.com/bonobodotorg](http://www.facebook.com/bonobodotorg)



[twitter.com/bonobodotorg](http://twitter.com/bonobodotorg)

